

Please make sure to read the enclosed safety instructions prior to using your unit.

# NINJA thirsti™

DRINK SYSTEM



# QUICK START GUIDE

**+ RECIPES**






GET STARTED

# BEFORE YOUR FIRST DRINK

## RUN A RINSE CYCLE ON YOUR NINJA THIRSTI DRINK SYSTEM

**ALWAYS** ensure the Mixing Chamber is installed for system to operate.

1. Place a large cup on the drip tray.
2. Fill the Water Reservoir with ice to the 6oz line and cold filtered water to the 18oz line. Place on the dock.
3. Select "still" by toggling the  button.
4. Select 12 by toggling the  button.
5. Press  button to start the Rinse Cycle.  
**NOTE:** The system will dispense 6oz two times. Listen for the end chime to know when dispense is complete.
6. Dispose of dispensed water once the Rinse Cycle is complete.

### NINJA THIRSTI™ DRINK SYSTEM

Number of carbonation levels will vary per model.



REMOVABLE MIXING CHAMBER

FOLD-DOWN CUP TRAY

REMOVABLE DRIP TRAY

CO<sub>2</sub> ACCESS DOOR

NINJA THIRSTI  
48OZ WATER RESERVOIR  
WITH COLD WATER INDICATOR

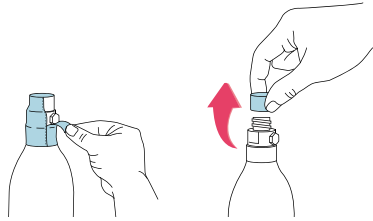
NINJA THIRSTI  
60L CO<sub>2</sub> CANISTER  
Makes up to 100  
drinks (12oz each).

FLAVORED WATER DROPS STARTER PACK

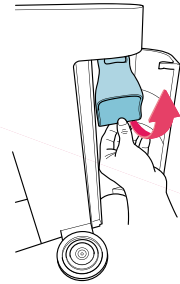
Includes a variety of Flavored Water Drops.  
**ALWAYS** dilute Flavored Water Drops through the Ninja Thirsti Drink System.  
*Flavor and quantity will vary per model.*

# SETTING UP YOUR NINJA THIRSTI™

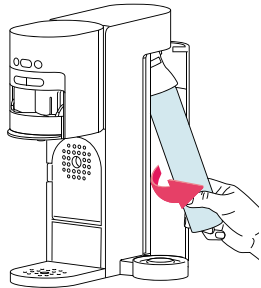
## 1. INSTALL CO<sub>2</sub> CANISTER



Remove the tamper seal and plastic cap from the top of the CO<sub>2</sub> canister.  
**NOTE:** Save the black CO<sub>2</sub> cap for return.

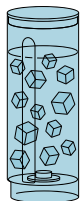


Open the CO<sub>2</sub> Door (remove instructional insert if not needed) and pull out the CO<sub>2</sub> collar.

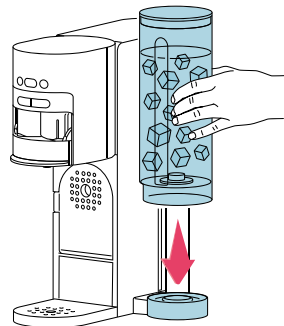


Install canister into collar by twisting to the right. **TWIST UNTIL TIGHT.**

## 2. DOCK WATER RESERVOIR



Fill the water reservoir with ice to the 18oz line. Completely fill with cold filtered water.

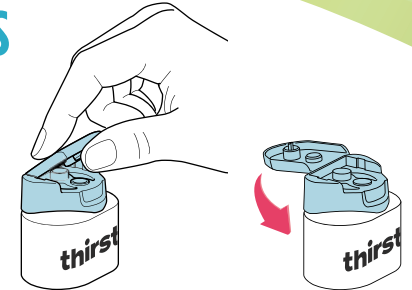


Place filled water reservoir onto dock.

## 3. OPEN ONE OR TWO FLAVORED WATER DROPS



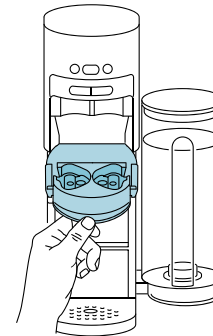
Tear off **only the top** tamper seal. Entire cap should be exposed.



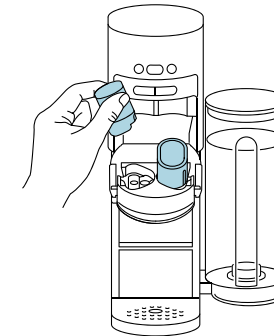
Flip cap all the way back to the open position.

**NOTE:** Store Flavored Water Drops in a cool, dark place to further maintain aroma, color, and taste.

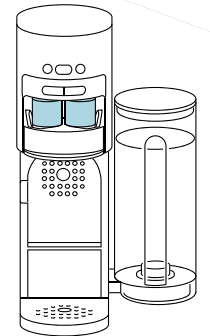
## 4. INSTALL FLAVORED WATER DROPS



Open the Flavor Carriage by pressing down on the Mixing Chamber.



Flip Flavored Water Drops upside down. **GENTLY** click into place.



Flip Flavor Carriage up into the closed position. An error beep will be heard if the Flavor Carriage is not fully closed.

### CUSTOMIZE YOUR BEVERAGE ON THE NEXT PAGE

# SO MANY WAYS TO PERSONALIZE A SINGLE FLAVOR

## CHOOSE A FIZZ

NOTE: Number of sparkling levels will vary by model.

**STILL**      **LOW FIZZ**      **MEDIUM FIZZ**      **HIGH FIZZ**

NO BUBBLES      A TOUCH OF BUBBLES      CLASSIC SELTZER BUBBLES      MAX BUBBLES

still | sparkling      still | sparkling      still | sparkling      still | sparkling

## SELECT A SIZE

Don't grab your drink until you hear the chime, the system dispenses 6oz at a time.

TIP: Cup tray folds down to accommodate smaller cups.

**6 OZ**  
Juice Glass  
One 6oz Dispense  
**NO COMBOS. SINGLE FLAVORS ONLY.**

**12 OZ**  
Pint Glass  
Two 6oz Dispenses

**18 OZ**  
Small Tumbler  
Three 6oz Dispenses

**24 OZ**  
XL Tumbler  
Four 6oz Dispenses  
\*Check out the 24oz Ninja Thirsti Travel Tumbler

## ADJUST FLAVOR STRENGTHS

Flavor strength buttons correlate to the Flavored Water Drops underneath.

NOTE: When creating a combo drink (2 flavors), the system will dispense half the amount of flavor, per Flavored Water Drops. This prevents too much flavor in one drink.

UNFLAVORED      CLASSIC      BOLD

CLASSIC SPARKLING WATER      WELL-BALANCED FLAVOR      MORE FLAVOR AND AROMA

**PRESS START**

## THE COLDER, THE BUBBLIER

Cold Water Indicator turns blue when water reaches the ideal temperature for carbonation.


**THE BRIGHTER THE BLUE  
THE COLDER THE WATER  
THE FIZZIER THE DRINK**


When not in use, fill and store the water reservoir in the refrigerator to guarantee cold, ready-to-carbonate water.



# TROUBLESHOOTING

## WHY IS THE SPARKLING BUTTON ORANGE?

The  button turns orange to indicate low CO<sub>2</sub>. When the button turns orange, there is enough CO<sub>2</sub> for approximately 10-25 drinks (12oz each).

Install a new CO<sub>2</sub> canister and reset the CO<sub>2</sub> Low indicator by holding down the  button for 2 seconds.

## DID YOU END YOUR CYCLE BY PRESSING START?

If you pressed the start button during a cycle, the product will prompt you to drain the system. See below for instructions on completing a Drain Dispense.

## WHY IS "DRAIN" ORANGE?

The last dispense cycle was interrupted and some water must be drained from the unit. Place a cup under the nozzle and press the start button to allow a Drain Dispense to complete. The unit must run a Drain Dispense before another drink can be made. It will only take a few seconds.

## WHY IS THE FLAVOR CARRIAGE LED BLINKING?


This means the mixing chamber is not properly installed. Please insert to start drink making.

## EMPTY DRIP TRAY

The drip tray should be emptied when the orange Empty Indicator can be seen or more than 20 beverages have been made.

# TIPS & TRICKS

## TIPS

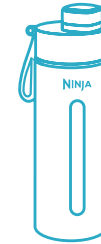
- Fill the water reservoir(s) with ice for immediate use or store the reservoirs in the refrigerator. Chill overnight to reach optimal cold temperature.
- When the  button turns orange, there is enough CO<sub>2</sub> remaining in the canister for approximately 10-25 drinks (12oz each).
- **DO NOT** freeze the water reservoir.
- Always add ice after your beverage has dispensed to maintain carbonation level.
- There is a 40% strength increase from classic to bold flavor strength.
- A float indicator on the removable drip tray will appear when it is time to empty. Slide the drip tray out from the unit, remove the lid, and empty. Slide back into the unit prior to drink making.
- After 10 minutes of no activity, the unit will enter sleep mode. Press any button to turn unit back on.
- Unit will always default to previous settings.
- The temperature indicator in the water reservoir will turn blue when water is at the ideal carbonating temperature.

# ACCESSORIZE & REPLENISH



## 48oz Water Reservoir

Additional Water Reservoirs kept in the refrigerator allow for always cold, always ready-to-carbonate water.



## Ninja Thirsti™ Travel Bottle

Colder & fizzier drinks for longer.



## Flavored Water Drops Replenishment

Buy more to never have a day without flavor. Flavored Water Drops should be replaced after 30 days of being opened.



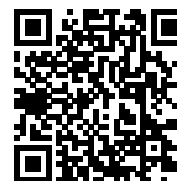
## Ninja Thirsti™ 360° Flavored Water Drops Storage

Hold up to 8 bottles of Flavored Water Drops in the 360° storage rack for easy access to all flavors.



## CO<sub>2</sub> Refill Club

Scan the QR code and join the CO<sub>2</sub> refill club to never miss a day of carbonation. Each 60L CO<sub>2</sub> canister makes 100 carbonated drinks (12oz each).



## SHOP OUR COLLECTION

Need more flavors, CO<sub>2</sub>, water reservoirs, or recipes?  
Visit [NinjaThirsti.com](https://NinjaThirsti.com)

# STRAWBERRY KIWI REFRESHER

**MAKES:** 1 serving (12oz)

## INGREDIENTS

Hydrate Strawberry Kiwi Flavored Water Drops\*

Juice of 1 lemon

1/4 cup strawberry slices

1/4 cup kiwi slices

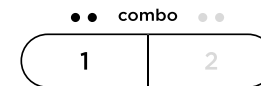
## GARNISHES

Strawberry slices

Kiwi slices

### 1. FILL WATER RESERVOIR WITH ICE AND WATER

### 2. ADJUST FLAVOR INTENSITY



### 3. CHOOSE FIZZ

still | sparkling

### 4. SELECT SIZE



### 5. PRESS START

When dispensing is complete, an audible sound will be heard.

### 6. FINISHING TOUCHES

Place lemon juice and strawberry and kiwi slices in a cocktail shaker. Using a wooden spoon, gently muddle the ingredients together.

Add Thirsti Strawberry Kiwi Water and ice to shaker and shake vigorously for 20 seconds. Strain the mixture and transfer into a glass. Garnish with fresh strawberry and kiwi slices.

\*Flavors for starter box will vary.



# PINEAPPLE FIZZ

**MAKES:** 1 serving (12oz)

## INGREDIENTS

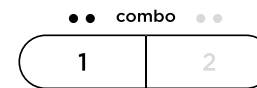
Splash Tropical Pineapple Flavored Water Drops\*  
1 cup pineapple juice

## GARNISHES

Pineapple chunks

### 1. FILL WATER RESERVOIR WITH ICE AND WATER

### 2. ADJUST FLAVOR INTENSITY



### 3. CHOOSE FIZZ



### 4. SELECT SIZE



### 5. PRESS START

When dispensing is complete, an audible sound will be heard.

### 6. FINISHING TOUCHES

Place pineapple juice and ice in 12oz+ glass and mix to chill. Pour in Thirsti Pineapple Sparkling Water and gently stir to combine. Garnish with pineapple chunks.



**EXPLORE ALL OUR  
FLAVORED WATER DROPS**

\*Flavors for starter box will vary.



# SPICY PEACH MANGO SPRITZ

**MAKES:** 1 serving (12oz)

## INGREDIENTS

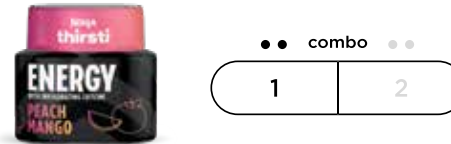
Energy Peach Mango Flavored Water Drops\*  
 1/4 cup lime juice  
 3/4 cup mango concentrated juice  
 1/8 teaspoon cayenne pepper (optional)

## GARNISHES

Tajín seasoning  
 Peach or mango slices  
 Lime wedges

### 1. FILL WATER RESERVOIR WITH ICE AND WATER

### 2. ADJUST FLAVOR INTENSITY



### 3. CHOOSE FIZZ



### 4. SELECT SIZE



### 5. PRESS START

When dispensing is complete, an audible sound will be heard.

### 6. FINISHING TOUCHES

If desired, wet the rim of a glass with water and dust with Tajín seasoning, then set aside.

Place ice, lime juice, mango juice, Thirsti Peach Mango Sparkling Water, and cayenne (if using) in a glass and stir. Garnish with peach or mango slices and lime wedges.

\*Flavors for starter box will vary.



# RASPBERRY LEMONADE

**MAKES:** 1 serving (12oz)

## INGREDIENTS

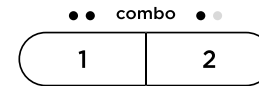
Splash Ripe Raspberry Flavored Water Drops\*  
Vitamins Lemonade Flavored Water Drops\*

## GARNISHES

Raspberries  
Lemon slices  
Lime slices

### 1. FILL WATER RESERVOIR WITH ICE AND WATER

### 2. ADJUST FLAVOR INTENSITY



### 3. CHOOSE FIZZ



### 4. SELECT SIZE



### 5. PRESS START

When dispensing is complete, an audible sound will be heard.

### 6. FINISHING TOUCHES

Garnish with raspberries, lemon slices, and lime slices.

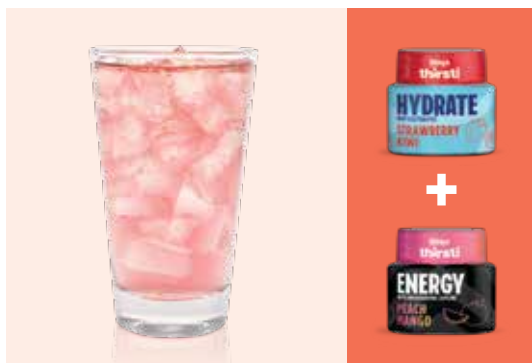
**NOTE:** When creating a combo drink (2 flavors), the system will dispense half the amount of flavor, per Flavored Water Drops. This prevents too much flavor in one drink.

\*Flavors for starter box will vary.



# THIRSTOLOGIST-APPROVED COMBOS

Try our favorite combos or get creative and create your own delicious combinations.



## STRAWBERRY MANGO TANGO

Strawberry Kiwi? Yum.  
Peach Mango? Double yum.  
Strawberry Kiwi Peach Mango?  
Too many yums to count.

## STRAWBERRY KIW I RASPBERRY

How do you make a dynamic duo like Strawberry Kiwi even better? Add a splash of razz for a drink with pizazz.



## MORNING MANGO ORANGE

Start your day with a delicious dose of vitamin-packed Orange Tangerine mixed with Island Mango.



## MANGO PASSION PUNCH

When you combo Exotic Passionfruit with Island Mango, it packs a flavorful punch like no other.



## VERY BERRY PINEAPPLE

An iconic tropical fruit meets your fave wild berries. Trying this drink is so necessary.

## DRAGON FRUIT LEMONADE

It's just like your grandma's pink lemonade, except it's got vitamins, exotic fruit flavor, and zero sugar.



**NOTE:** Flavors for starter box will vary.



Explore all our flavors for more combo possibilities.





**NINJA**  
**thirsti™**  
**DRINK SYSTEM**

---

WC100XSeries\_QSG\_IG\_REV\_Y2\_Mv4

© 2023 SharkNinja Operating LLC.

NINJA THIRSTI is a trademark of SharkNinja Operating LLC.