

Please make sure to read the enclosed Ninja® Owner's Guide prior to using your unit.

NINJA®

SINGLE-SERVE

PODS & GROUNDS

COFFEE MAKER

**QUICK
START
GUIDE**

BEFORE YOUR FIRST BREW

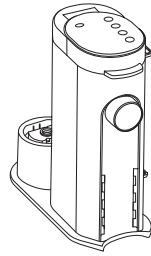
IMPORTANT: Ensure you prime your coffee maker before your first brew.

TO PRIME YOUR COFFEE MAKER:

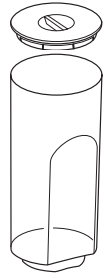
- 1 Clean all accessories before your first brew.
- 2 Plug in the power cord and the coffee maker will turn on automatically.
- 3 Lift the water reservoir off its base. Remove the reservoir lid. Fill the reservoir up to at least the 24 oz. line with fresh water and place it back on the base.
- 4 Open the coffee maker lid, remove the Ninja Pod Adapter and insert the Permanent Filter. Do not add coffee; close the lid.
- 5 Place a 24 oz. cup under the nozzle and prime the system by running a 24 oz. Classic brew with water only.
- 6 Once the brew is complete, discard the water; coffee maker is now primed for use.

NOTE: If using the brewer in a high-altitude area, running a calibration brew is required. Not running a high-altitude calibration brew in a high-altitude area will result in excessive steaming during brewing. Refer to page 5 of the Owner's Guide for instructions on running a high-altitude calibration brew.

WHAT'S IN THE BOX



**NINJA PODS & GROUNDS
COFFEE MAKER**



**56 OZ. REMOVABLE
WATER RESERVOIR**



ADJUSTABLE CUP TRAY



BREW BASKET

Comes fully installed in the brewer. It must always be inserted when brewing pods or grounds.



NINJA POD ADAPTER

Comes fully installed in the coffee maker. Ninja Pod Adapter must always be inserted in the brew basket when brewing pods.



PERMANENT FILTER

Located in the adapter storage on the right side of the unit. Permanent Filter must always be inserted in the brew basket when brewing grounds.



ADAPTER STORAGE BIN



NINJA SMART SCOOP™

Use this to measure coffee grounds.

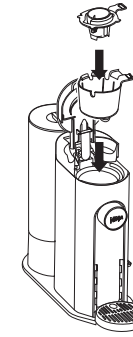
USING THE NINJA POD ADAPTER AND PERMANENT FILTER

The Ninja Single-Serve Pods & Grounds Coffee Maker comes with the unique Ninja Pod Adapter already installed and a Permanent Filter in the Adapter Storage Bin located on the right side of the coffee maker. Always ensure the Ninja Pod Adapter or Permanent Filter is installed in the brew basket.



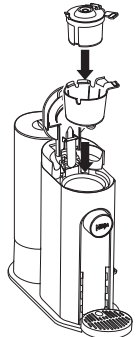
INSTALLING THE NINJA POD ADAPTER

Place the Ninja Pod Adapter in the brew basket, ensure the handle is aligned with the brew basket handle, and press down on the Ninja Pod Adapter firmly until it clicks into place.



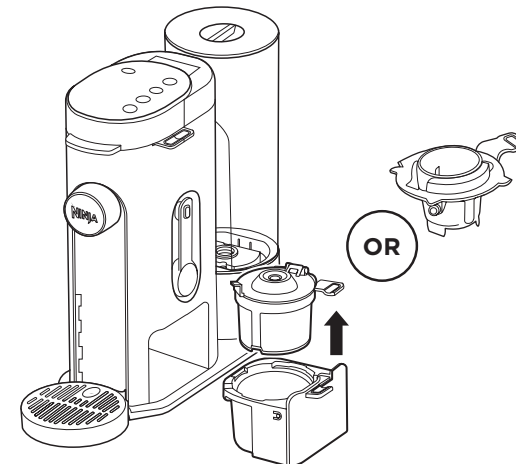
INSTALLING THE PERMANENT FILTER

Place the Permanent Filter in the brew basket and ensure the handle is aligned with the brew basket handle.



ADAPTER STORAGE BIN

The adapter storage is located on the right side of the unit and can be used for both the Permanent Filter and Ninja Pod Adapter.



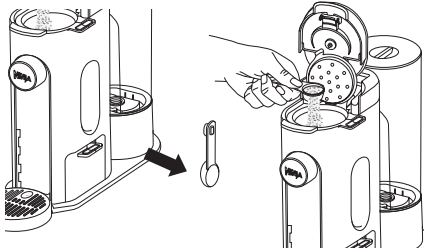
HOW TO BREW

1 CHOOSE A METHOD



GROUNDS

- 1 Place the Permanent Filter in the brew basket.
- 2 Using the Ninja Smart Scoop, measure out grounds following the measurements on the scoop or in the chart below.



COFFEE MEASUREMENT CHART

Serving Size	Ninja Smart Scoop
6 oz.	2-3 Scoops
8 oz.	
10 oz.	
12 oz.	3-5 Scoops
14 oz.	
18 oz.	
24 oz.	
24 oz.	5-7 Scoops

- 3 Close the Permanent Filter and then the coffee maker lid.

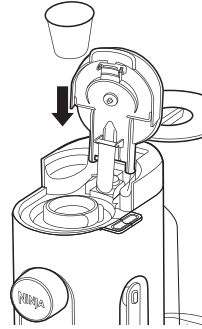
OR



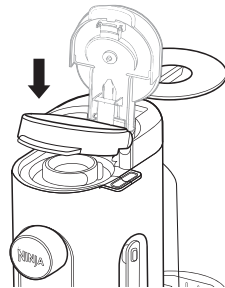
PODS

- 1 Place the Ninja Pod Adapter in the brew basket.
- 2 Place a pod in the Ninja Pod Adapter.

IMPORTANT: Ensure the pod is not damaged, torn, or expired. **DO NOT** remove the top of the K-Cup Pod.



- 3 Press the coffee maker lid down firmly to pierce the pod and ensure that the lid is completely closed. There will be an audible click and some resistance when closing the handle as the needle punctures the pod.



IMPORTANT: There is a chance the needle could become clogged after multiple uses. If you find that your needle seems clogged, a paper clip will fit perfectly inside the needle to clean it out.

2 SELECT A BREW STYLE



Smooth, well-balanced flavor.



More intense flavor that stands up to milk, cream, or flavoring.



Specially designed to brew hot over ice for freshly brewed iced coffee that is not watered down. **Always fill your vessel to the top with ice cubes before brewing Over Ice.**

3 SELECT A SIZE



6 oz. 8 oz. 10 oz. 12 oz.



6 oz. 8 oz. 10 oz. 12 oz. 14 oz. 18 oz. 24 oz.

*Approximate brew volumes based on Classic brew. Rich brew will produce slightly less output. Refer to the Approximate Brew Volumes chart in the Owner's Guide for more information.

4 BREW



Press the **BREW BUTTON** to start brewing. A confirmation beep will sound and the progress bar on the control panel will illuminate to indicate the status of the brew.

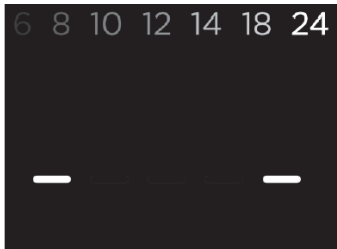
NOTE: THE BREW MAY PAUSE ONCE OR MULTIPLE TIMES DURING THE BREW CYCLE. THIS IS NORMAL. Pausing allows the coffee grounds to fully extract and unlock the full flavor of the brew style.

DISHWASHER-SAFE PARTS

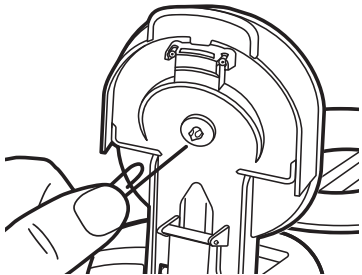
All parts (excluding the main unit) are dishwasher safe. We recommend cleaning used parts after each brew.



CLEANING THE TOP & BOTTOM NEEDLES



Check the top and bottom needles regularly for coffee ground buildup. If your unit's display is flashing all sizes at once or you are experiencing inconsistent brews, there may be a clog in the needles.



To fix this, grab a paper clip (or something similar) and insert it into each needle. Move the paper clip around to release any leftover grounds. If there is still an error message after cleaning, we recommend waiting a few minutes, powering the unit off and back on, and then starting the brew over.

NINJA[®]

SINGLE-SERVE

PODS & GROUNDS

COFFEE MAKER

For questions or to register your product, contact us at
1-877-646-5288 or visit us online at ninjakitchen.com



@ninjakitchen

PB040_QSG_REV_MV5

© 2023 SharkNinja Operating LLC

NINJA is a registered trademark of SharkNinja Operating LLC.
NINJA SMART SCOOP is a trademark of SharkNinja Operating LLC.