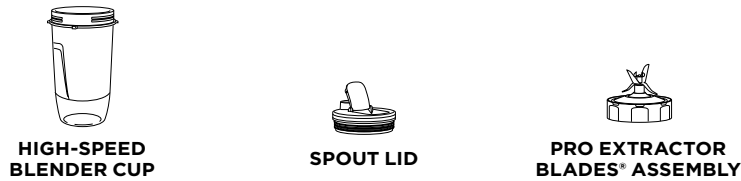


Please make sure to read the enclosed Ninja® Owner's Guide prior to using your unit.

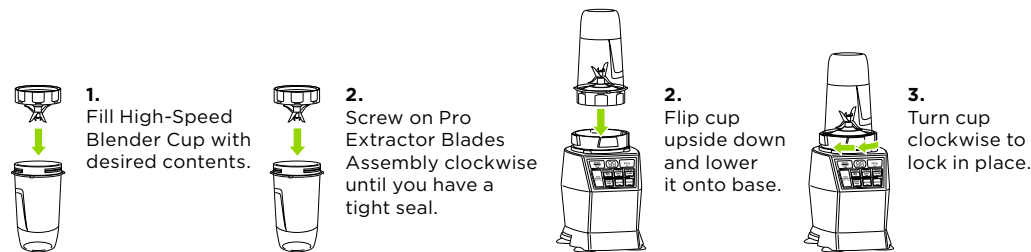
NINJA® NINJA® 4-IN-1 KITCHEN SYSTEM™ QUICK ASSEMBLY

HIGH-SPEED BLENDER CUP

PARTS

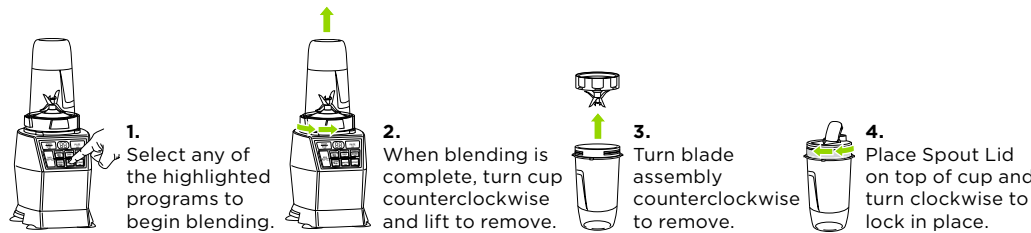


ASSEMBLY



BLEND & ENJOY

Connect base to power source. Display will read "--" once base is properly connected.



Once a container is locked onto base, the program buttons compatible with that container will illuminate.

WARNING: Handle the Pro Extractor Blades Assembly with care, as the blades are sharp.

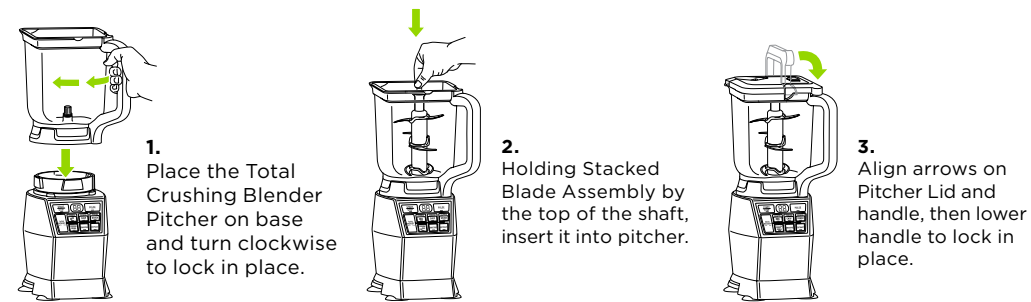
QUESTIONS? We're here to help. Call 1-877-646-5288 or visit ninjakitchen.com

TOTAL CRUSHING® BLENDER

PARTS

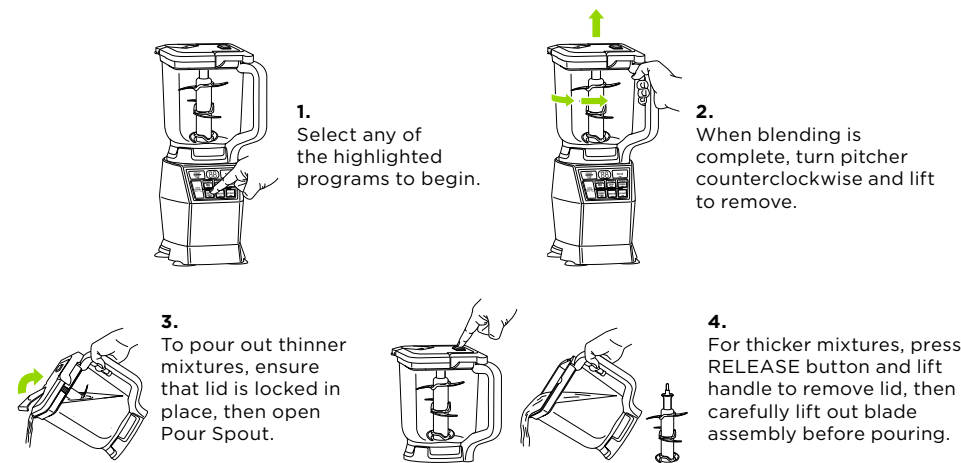


ASSEMBLY



BLEND & ENJOY

Connect base to power source. Display will read "--" once base is properly connected.



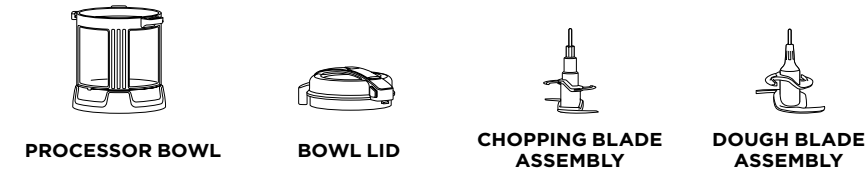
Once a container is locked onto base, the program buttons compatible with that container will illuminate.

WARNING: Stacked Blade Assembly is sharp and not locked in place. Make sure lid is locked onto the pitcher before pouring. If pouring without lid, carefully remove Stacked Blade Assembly first. Failure to do so will result in a risk of laceration. Refer to the Ninja Owner's Guide for additional information.

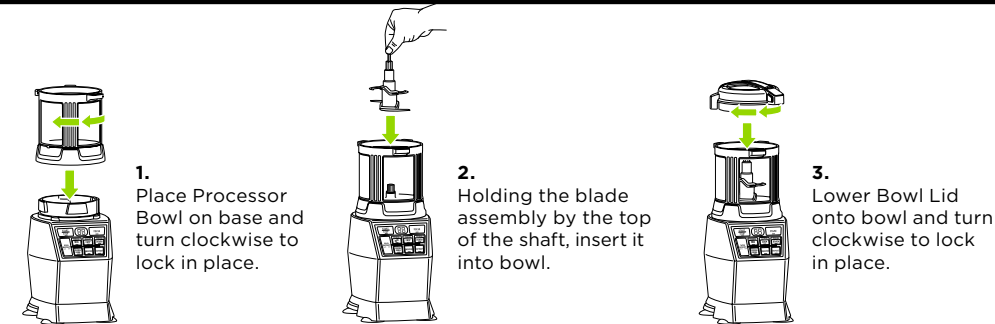
QUESTIONS? We're here to help. Call 1-877-646-5288 or visit ninjakitchen.com

PRECISION PROCESSOR™

PARTS

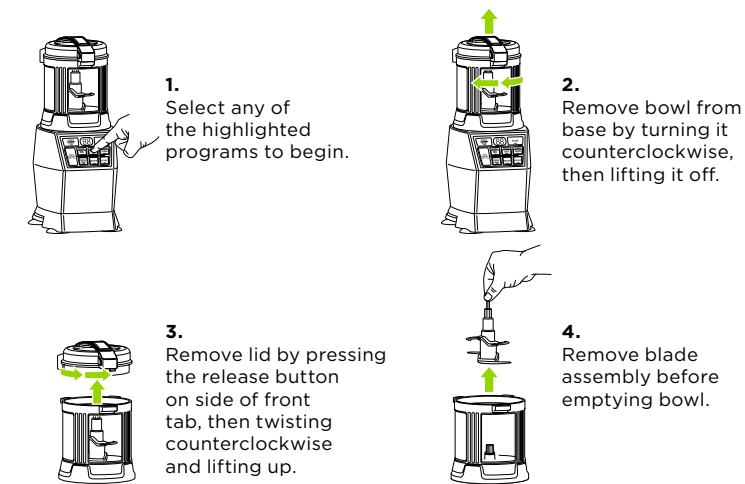


ASSEMBLY



PROCESS & ENJOY

Connect base to power source. Display will read "--" once base is properly connected.



Once a container is locked onto base, the program buttons compatible with that container will illuminate.

WARNING: Chopping Blade Assembly is sharp and not locked in place. Before pouring, carefully remove blade assembly. Failure to do so will result in a risk of laceration. Refer to the Ninja® Owner's Guide for additional information.

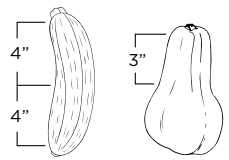
QUESTIONS? We're here to help. Call 1-877-646-5288 or visit ninjakitchen.com

OH THE PASTA-BILITIES

VISIT NINJAKITCHEN.COM
FOR ACCESSORIES, RECIPES AND MORE.

SPIRALIZER FOOD PREP

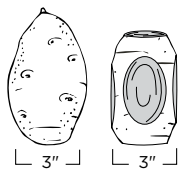
FOR BEST RESULTS, PREPARE YOUR INGREDIENTS BEFORE SPIRALIZING



Trim ingredients so they are no taller than the Feed Chute (4"). For butternut squash and potatoes, the max recommended height is 3".



Cut both ends off ingredient to create flat surfaces, helping to secure ingredient to both the Blade Disc pin and Food Pusher.



Cut ingredient so it is no more than 3" wide. Trim evenly from all sides to maintain a roughly cylindrical shape. **DO NOT** cut in half lengthwise.



Peel ingredients with tough skin, like sweet potatoes or butternut squash.



Trim tapered ingredients like carrots to make them more symmetrical. Ingredients must be larger than 1.5" in diameter.

TEAR HERE

AUTO-SPIRALIZER™

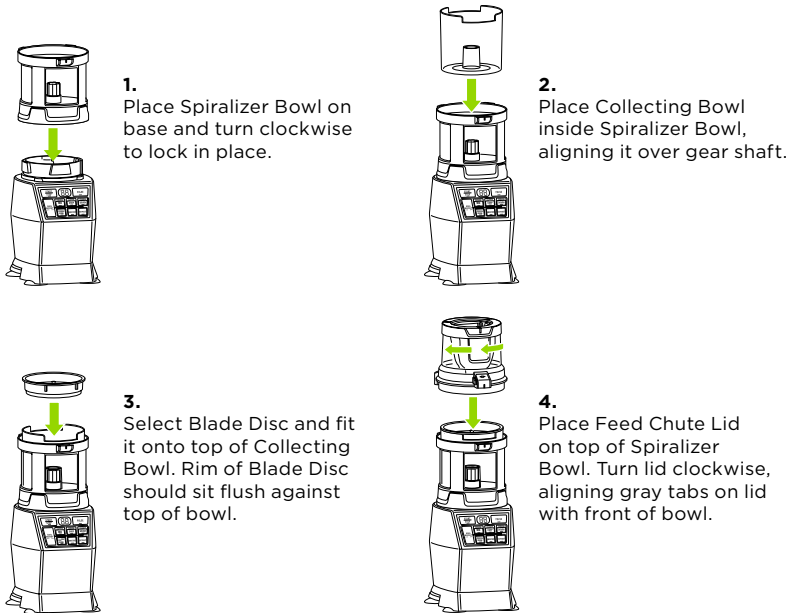
PARTS



SPIRALIZER BOWL **COLLECTING BOWL** **FEED CHUTE LID** **FOOD PUSHER** **BLADE DISC**

ASSEMBLY

Connect base to power source. Display will read "--" once base is properly connected.



Once a container is locked onto base, the program buttons compatible with that container will illuminate.

WARNING: Handle Blade Discs with care, as the blades are sharp.

QUESTIONS? We're here to help. Call 1-877-646-5288 or visit ninjakitchen.com

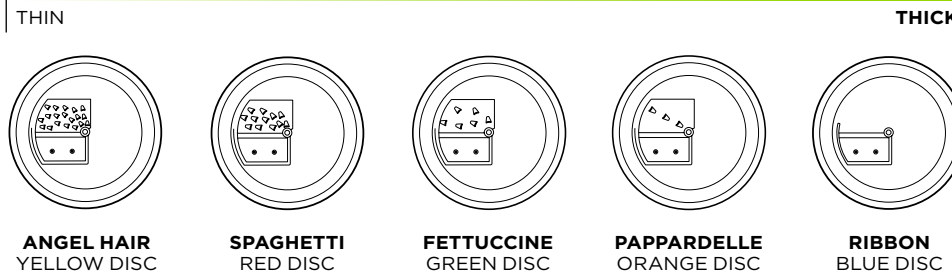
Please make sure to read the enclosed Ninja® Owner's Guide prior to using your unit.

NINJA® 4-IN-1 KITCHEN SYSTEM™
QUICK ASSEMBLY

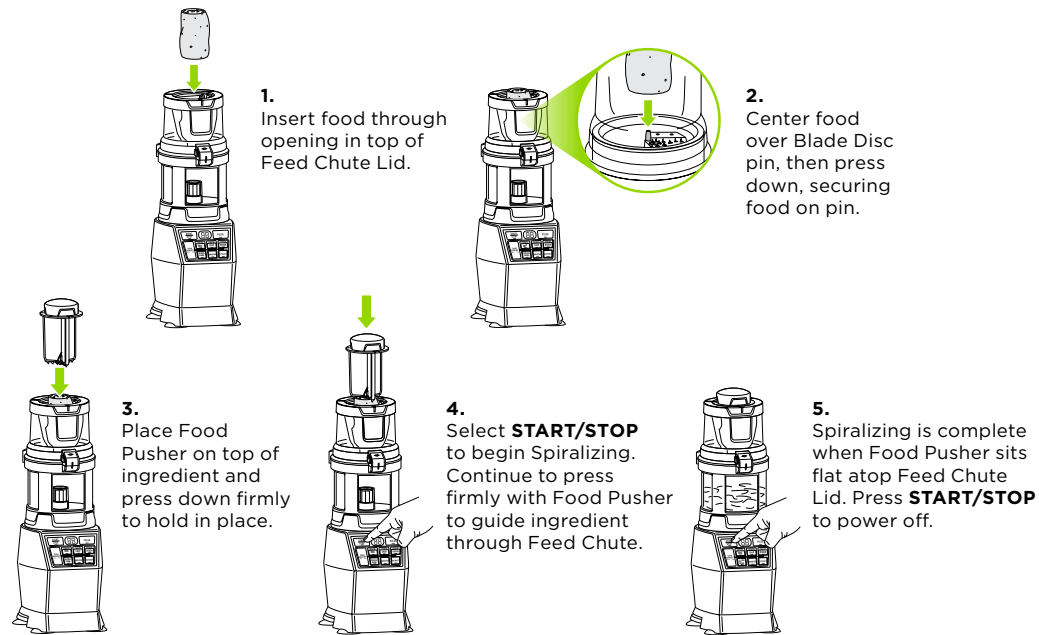
AUTO-SPIRALIZER™ CONT.

PASTA STYLES

SELECT DESIRED BLADE DISC PRIOR TO ASSEMBLY



HOW TO SPIRALIZE



After spiralizing an ingredient, all leftover pieces must be removed from the Collecting Bowl and Blade Disc before spiralizing again. To remove feed chute lid press the release button located on side of gray front tab.

WARNING: Handle Blade Discs with care, as the blades are sharp.

WARNING: When using the Auto-Spiralizer, always use the Food Pusher. Never feed ingredients by hand or with other utensils. Failure to use the Food Pusher may cause personal injury.

QUESTIONS? We're here to help. Call 1-877-646-5288 or visit ninjakitchen.com

AUTO-iQ BOOST™

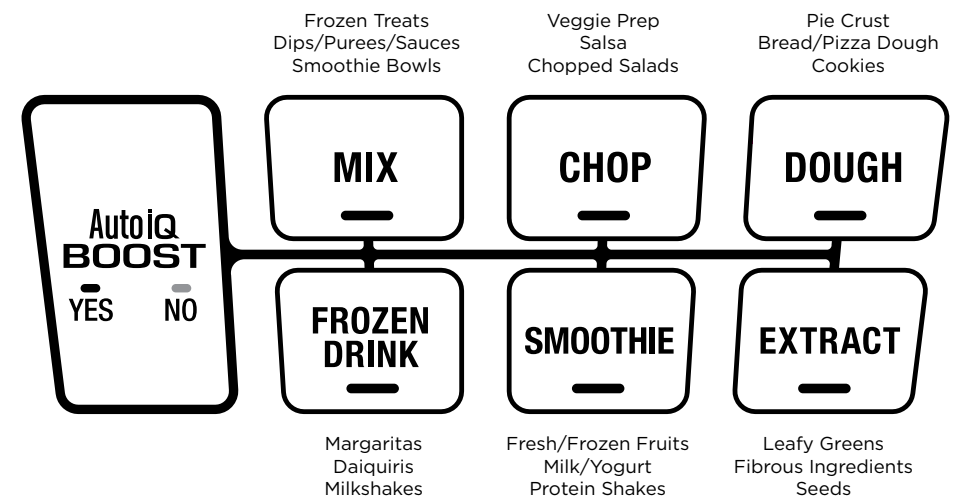
Auto-iQ Boost gives you the perfect consistency for all your recipes, from smoothies and juices to sauces and dips. Here's how to get the best results with each program on your Ninja® 4-in-1 Kitchen System. (Certain Auto-iQ® programs are compatible with each container. You are only able to select those programs that are illuminated.)

HOW BOOST WORKS

BOOST defaults to preset settings. Toggle between YES and NO to customize the consistency of your recipe.

BOOST YES: Use BOOST YES for the finest breakdown or the most even consistency in all recipes.

BOOST NO: Use BOOST NO for more thickness or texture in all recipes.



CLEANING

Dishwasher: The containers, lids, Blade Discs, and blade assemblies are all dishwasher safe. The lids, Blade Discs, and blade assemblies are top-rack dishwasher safe. Ensure the Blade Discs and blade assemblies are removed from the containers before placing in the dishwasher.

Hand washing: Wash containers, lids, Blade Discs, and blade assemblies in warm, soapy water. When washing the Blade Discs and blade assemblies, use the provided cleaning brush or a dishwashing utensil with a handle to avoid direct hand contact with blades. Handle Blade Discs and blade assemblies with care to avoid contact with sharp edges. Rinse and air-dry thoroughly.

WARNING: Handle the Blade Discs and blade assemblies with care when washing, as the blades are sharp. Contact with the blades' edges can result in laceration.

QUESTIONS? We're here to help. Call 1-877-646-5288 or visit ninjakitchen.com