

NINJA®

Precision Processor™


NN300

Series

INSTRUCTIONS



 ninjakitchen.com

 1-877-646-5288

THANK YOU

for purchasing the Ninja® Precision Processor™



TIP: You can find the model and serial numbers on the QR code label which is located on the back of the motor base.

REGISTER YOUR PURCHASE

- registeryourninja.com
- 1-877-646-5288
- Scan QR code using mobile device

RECORD THIS INFORMATION

Model Number: _____
Serial Number: _____
Date of Purchase (Keep receipt): _____
Store of Purchase: _____

TECHNICAL SPECIFICATIONS

Voltage: 120V, 60Hz
Watts: 400W

PLEASE READ CAREFULLY AND KEEP FOR FUTURE REFERENCE.

These instructions are designed to help you get a complete understanding of your new Ninja Pro Touch Blender.

If you have any questions, please call our customer service line at 1-877-646-5288.

CONTENTS

Important Safety Instructions	3
Before First Use	6
Getting to Know Your Ninja® Precision Processor™	7
Using Your Precision Processor™ Bowl	9
Care & Maintenance	13
Cleaning	13
Storing.....	13
Resetting the Motor Thermostat.....	13
Ordering Replacement Parts	13
Troubleshooting Guide	14
Warranty	18

IMPORTANT SAFETY INSTRUCTIONS

PLEASE READ CAREFULLY BEFORE USE • FOR HOUSEHOLD USE ONLY

⚠ WARNING

When using electrical appliances, basic safety precautions should always be followed, including the following:

- 1 Read all instructions prior to using the appliance and its accessories.
- 2 Carefully observe and follow all warnings and instructions. This unit contains electrical connections and moving parts that potentially present risk to the user.
- 3 This product comes with a Chopping Blade Assembly. **ALWAYS** exercise care when handling blade assemblies. The blade assemblies are sharp and are **NOT** locked in place in their containers. The blade assemblies are designed to be removable to facilitate cleaning and replacement if needed. **ONLY** grasp the blade assembly by the top of the shaft. Failure to use care when handling the blade assemblies will result in a risk of laceration.
- 4 Take your time and exercise care during unpacking and appliance setup. This appliance contains sharp, loose blades that can cause injury if mishandled.
- 5 Take inventory of all contents to ensure you have all parts needed to properly and safely operate your appliance.
- 6 Unplug the appliance from the outlet when not in use, before assembling or disassembling parts, and before cleaning. To unplug, grasp the plug by the body and pull from the outlet. **NEVER** unplug by grasping and pulling the power cord.
- 7 Before use, wash all parts that may come in contact with food. Follow washing instructions covered in this instruction manual.
- 8 To protect against the risk of electric shock, **DO NOT** submerge the appliance or allow the power cord to contact any form of liquid.
- 9 **DO NOT** use this appliance outdoors. It is designed for indoor household use only.
- 10 This appliance has a polarized plug (one blade is wider than the other). To reduce the risk of electric shock, this plug will fit in a polarized outlet only one way. If the plug does not fit fully in the outlet, reverse the plug. If it still does not fit, contact a qualified electrician. **DO NOT** modify the plug in any way.
- 11 **DO NOT** operate any appliance with a damaged cord or plug, or after the appliance malfunctions, has been dropped or damaged in any manner. This appliance has important markings on the plug blade. The entire cordset is **NOT** suitable for replacement. If damaged, please contact SharkNinja LLC.
- 12 Extension cords should **NOT** be used with this appliance.
- 13 **DO NOT** allow young children to operate this appliance or use as a toy. Close supervision is necessary when any appliance is used near children.
- 14 This appliance is **NOT** intended to be used by people (including children) with reduced physical, sensory, or mental capabilities, or lack of experience and knowledge, unless they have been given supervision or instruction concerning use of the appliance by a person responsible for their safety.
- 15 Before each use, inspect blade assemblies for damage. If a blade is bent or damage is suspected, contact SharkNinja to arrange for replacement.
- 16 **DO NOT** attempt to sharpen blades.
- 17 **DO NOT** allow the cord to hang over the edges of tables or counters. The cord may become snagged and pull the appliance off the work surface.
- 18 **DO NOT** allow any part of the unit to contact hot surfaces, including stovetops and other heating appliances.
- 19 **ALWAYS** use the appliance on a dry and level surface.
- 20 **NEVER** place a blade assembly on the motor base without it first being attached to its corresponding container and lid.
- 21 Keep hands, hair, and clothing out of the container when loading and operating.
- 22 **ONLY** use attachments and accessories that are provided with the product or are recommended by SharkNinja. The use of attachments not recommended or sold by SharkNinja may cause fire, electric shock or injury.
- 23 During operation and handling of the appliance, avoid contact with moving parts.
- 24 **DO NOT** operate the appliance with an empty container.
- 25 **DO NOT** fill container past the max fill or max liquid lines.
- 26 **DO NOT** microwave containers or accessories provided with the appliance.
- 27 Before operation, ensure all utensils are removed from container. Failure to remove utensils can cause container to shatter and potentially result in personal injury and property damage.
- 28 Keep hands and utensils out of container while chopping to reduce the risk of severe personal injury or damage to the food chopper. A scraper may **ONLY** be used when the food chopper is **NOT** running.

CONTINUED ON PAGE 5

SAVE THESE INSTRUCTIONS

IMPORTANT SAFETY INSTRUCTIONS

PLEASE READ CAREFULLY BEFORE USE • FOR HOUSEHOLD USE ONLY

⚠ WARNING

When using electrical appliances, basic safety precautions should always be followed, including the following:

- 29 NEVER** operate the appliance without lid in place. **DO NOT** attempt to defeat the interlock mechanism. Ensure the container and lid are properly installed before operation.
- 30 DO NOT** expose the container and accessories to extreme temperature changes. They may experience damage.
- 31 NEVER** leave the appliance unattended while in use.
- 32 DO NOT** blend hot liquids. Doing so may result in a pressure buildup and steam exposure that can pose a risk of the user being burned.
- 33 DO NOT** attempt to remove the container and lid from the motor base while blade assembly is still spinning. Allow the appliance to come to a complete stop before removing lids and containers.
- 34** Upon completion of processing, ensure the blade assembly is removed **BEFORE** emptying container's contents. Remove the blade assembly by carefully grasping the top of the shaft and lifting it from the container. Failure to remove the blade assembly before emptying the container can result in a risk of laceration.
- 35** If the appliance overheats, a thermal switch will activate and temporarily disable the motor. To reset, unplug the appliance and allow it to cool for approximately 15 minutes before using again.
- 36** The maximum wattage rating for this appliance is based on the configuration of the Dough Blade Assembly and Precision Processor™ Bowl. Other configurations may draw less power or current.

BEFORE FIRST USE

★ **IMPORTANT:** Review all warnings on pages 3–5 before proceeding.

DID YOU KNOW?

- All containers, lids, and blade assemblies are BPA free.
- Our blades, containers, and lids are top rack dishwasher safe.

- 1** Remove all packaging materials from the appliance. Exercise care when unpacking blade assemblies. All blade assemblies are sharp.
- 2** The Chopping Blade Assembly is **NOT** locked in place in its container. Handle the Chopping Blade Assembly by grasping the top of the shaft.
- 3** Wash container, lid, and blade assemblies in warm, soapy water, using a dishwashing utensil with a handle to avoid direct contact with the blades. Exercise care when handling blade assemblies, as the blades are sharp.
- 4** Thoroughly rinse and air-dry all parts.
- 5** All attachments are dishwasher safe. It is recommended that the container, lid, and blade assemblies be placed on the top rack of the dishwasher. Ensure blade assemblies are removed from their containers before placing in the dishwasher. Exercise care when handling blade assemblies.
- 6** Wipe the motor base with a clean, damp cloth.

SAVE THESE INSTRUCTIONS

GETTING TO KNOW YOUR NINJA® PRECISION PROCESSOR™

WELCOME!

Congratulations on your purchase. Use this instruction manual to learn about the great features of your Ninja. From assembly to use to maintenance, you will find it all in here.

.....

There are a variety of accessories that are compatible with this series.

NOTE: The top flap of your box shows the select accessories that are included with your model.

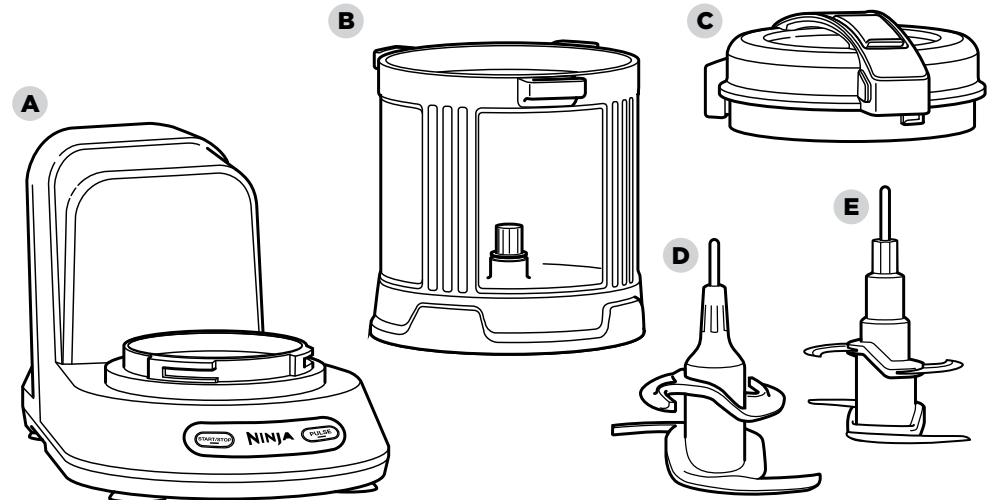
If you have any questions, concerns or feedback, we'd love to hear from you. Give us a call at 1-877-646-5288 or visit ninjakitchen.com/customersupport

To purchase more accessories and to find great recipes, please visit ninjakitchen.com

*3.5 cups max capacity,
15 oz. max liquid capacity.

MAIN UNIT

- A** Motor Base
- B** Precision Processor™ Bowl*
- C** Precision Processor Bowl Lid
- D** Dough Blade Assembly
- E** Chopping Blade Assembly



USING YOUR PRECISION PROCESSOR™ BOWL

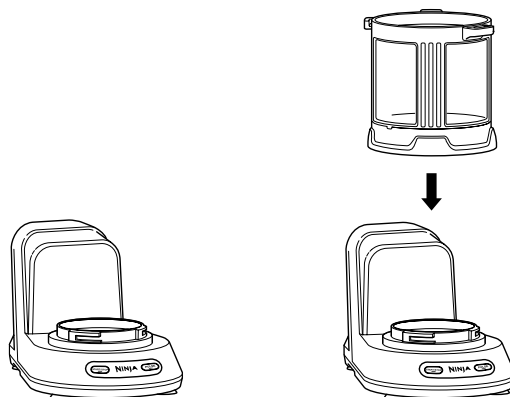
★ **IMPORTANT:** Review all warnings on pages 3–5 before proceeding.

💡 **TIP:** If the blade assembly is not fully seated, you will not be able to install and lock the lid into position.

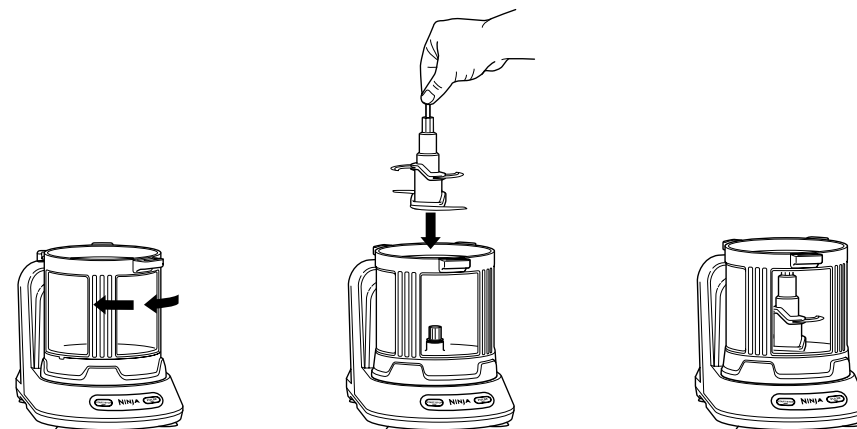
NOTE: DO NOT add ingredients before installing the blade assembly.

NOTE: For best results, follow recipe loading instructions.

💡 **TIP:** For best results when processing hard or tough ingredients such as raw meat, baking chocolate or hard cheese in the Precision Processor™ bowl, use 1" cubes and process no more than 1 cup at a time."



- 1** Place the unplugged motor base on a clean, dry, and level surface such as a countertop or table. Press downward on the motor base to adhere the suction cups to the work surface. Ensure the motor base is connected to power.
- 2** Lower the Precision Processor Bowl onto the motor base.

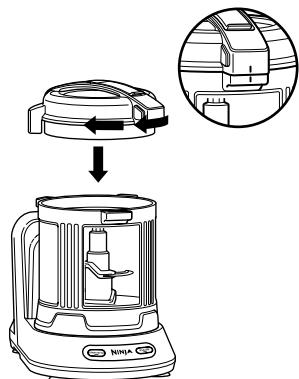


- 3** Rotate Precision Processor™ Bowl clockwise until it clicks into place.
- 4** Exercising care, grasp the Chopping Blade Assembly by the top of the shaft and place it onto the drive gear inside the bowl. Note that the Chopping Blade Assembly will fit loosely onto the drive gear.
- 5** Add ingredients to the bowl, making sure not to exceed the max liquid and max fill lines.

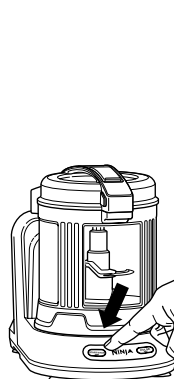
USING YOUR PRECISION PROCESSOR™ BOWL - CONT.

★ **IMPORTANT:** Review all warnings on pages 3–5 before proceeding.

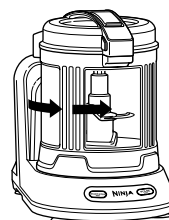
NOTE: Please follow the same instructions for the Dough Blade Assembly.



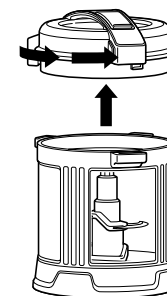
6 Place lid on Precision Processor Bowl, with black line on tab aligned slightly to the right of tab on front of bowl. Turn lid clockwise to lock in place. When properly locked, the white line on lid will line up with the black line on bowl. When the unit is connected to power and the container is correctly locked into the motor base, the program buttons will illuminate and the unit will be ready for use.



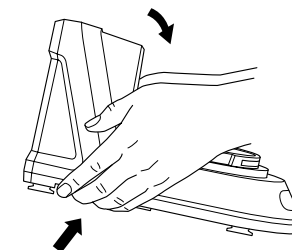
7 Press START/STOP to run continuously or PULSE to pulse the blade assembly.



8 To remove the bowl from the motor base, turn the bowl counterclockwise and then lift it.



9 Remove the lid by pressing the release button on the front tab, twisting the lid counterclockwise, and lifting up. Always remove the Chopping Blade Assembly before emptying any of the ingredients in the bowl. To remove the Chopping Blade Assembly, carefully grasp it by the top of the shaft and lift it out of the bowl.



10 Unplug the appliance when finished. To release the motor base, gently pull the unit up and towards you. Refer to page 13 for storing instructions.

CARE & MAINTENANCE

CLEANING

1 Separate all parts.

2 Hand Washing

Wash blade assemblies in warm, soapy water using a dishwashing utensil with a handle to avoid direct contact with the blades. Exercise care when handling blade assemblies as the blades are sharp. Thoroughly rinse and air-dry all parts.

Dishwasher

All attachments are dishwasher safe. It is recommended that the lid, container, and blade assemblies be placed on the top rack of the dishwasher **ONLY**. Ensure blade assemblies are removed from the container before placing in the dishwasher. Exercise care when handling blade assemblies.

3 Wipe the motor base with a clean, damp cloth. Allow to dry completely before operation.

STORING

Wrap the power cord around the back of the motor base. Store the unit upright and store all blade assemblies inside or attached to the container with the lid locked into place.

DO NOT stack items on top of the container. Store any remaining attachments alongside the appliance or in a cabinet where they will not be damaged or create a hazard.

RESETTING THE MOTOR THERMOSTAT

This appliance features a unique safety system that prevents damage to the motor and drive system should you inadvertently overload the appliance. If the appliance is overloaded, the motor will be temporarily disabled. Should this occur, follow the reset procedure below.

- 1** Unplug the appliance from the electrical outlet.
- 2** Allow the appliance to cool for approximately 15 minutes.
- 3** Remove the container lid and blade assembly. Empty the container and ensure no ingredients were jamming the blade assemblies.
- 4** Reset the unit in accordance with the applicable instructions for the container and blade type.

IMPORTANT: Ensure that maximum capacities are not exceeded. This is the most typical cause of appliance overload.

If your unit needs servicing, please call Customer Service at 1-877-646-5288.

ORDERING REPLACEMENT PARTS

To order additional parts and attachments, please visit ninjakitchen.com or contact customer service at 1-877-646-5288.

TROUBLESHOOTING GUIDE

⚠ WARNING: To reduce the risk of shock and unintended operation, turn power off and unplug unit before troubleshooting.

Unit does not turn on.

- Make sure unit is plugged in.
- Lower container onto base and twist clockwise until it clicks. Programs will illuminate, indicating that your unit is ready for use.

Unit does not turn off.

- Remove container from base by rotating it counterclockwise and lifting it up. Display should turn off. Unplug the power cord from the outlet.

Food is not evenly chopped.

- For best results when chopping, cut pieces down to even sizes and do not overfill the Precision Processor™ Bowl.

Motor base will not stick to counter or tabletop.

- Make sure surface and suction feet are wiped clean. Suction feet will only stick to smooth surfaces.
- Suction feet will not stick on some surfaces such as wood, tile, and non-polished finishes.
- **DO NOT** attempt to use appliance when the motor base is stuck to a surface that is not secure (cutting board, platter, plates, etc.)

Unit is difficult to remove from counter for storage.

- The suction feet at the base of the unit provide stability when in use. To release suction, gently pull the unit toward you.

Unit turned off while in use.

- As a safety feature to prevent damage to the motor and drive system, this unit will power off after a continuous run of 45 seconds or more.

The 1-Year Limited Warranty applies to purchases made from authorized retailers of SharkNinja Operating LLC. Warranty coverage applies to the original owner and to the original product only and is not transferable.

SharkNinja warrants that the unit shall be free from defects in material and workmanship for a period of 1 year from the date of purchase when it is used under normal household conditions and maintained according to the requirements outlined in this instruction manual, subject to the following conditions and exclusions.

What is covered by my warranty?

1. The original unit and/or non-wearable components deemed defective, in SharkNinja's sole discretion, will be repaired or replaced for up to 1 year from the original purchase date.
2. In the rare event that a replacement unit is issued, the warranty coverage ends six months after the receipt date of the replacement unit or the remainder of the existing warranty, whichever is greater. If the unit is replaced, SharkNinja reserves the right to replace the unit with one of equal or greater value.

What is not covered by my warranty?

Our Customer Service/Product Specialists are available to provide all the warranty service options available to you, including the possibility of upgrading to our VIP Warranty Service Options for select product categories.

1. Normal wear and tear of wearable parts (including all blending vessels, lids, blades and blender base) which require regular maintenance and/or replacement to ensure the proper functioning of your unit are not covered by this warranty.
2. Any unit that has been tampered with or used for commercial purposes.
3. SharkNinja will cover the cost for the customer to send the unit to us for repair or replacement. A fee of \$19.95 for return shipping costs will be charged at the time of return shipment of the repaired or replacement unit.
4. Damage caused by misuse, abuse, or negligent handling, or damage due to mishandling in transit.
5. Consequential and incidental damages.
6. Defects caused by or resulting from damages from shipping or from repairs, service, or alteration to the product or any of its parts which have been performed by a repair person not authorized by SharkNinja.
7. Products purchased, used or operated outside of North America.

Problems with your unit/How to get service:

If your appliance fails to operate properly while in use under normal household conditions within the warranty period, visit ninjakitchen.com for product care/maintenance self-help. Our Customer Service and product specialists are also available at 1-877-646-5288 to assist with product support and warranty service options.

How to initiate a warranty claim:

You can call 1-877-646-5288 to have a Customer Service specialist assist you. Please note, you must call 1-877-646-5288 to initiate a warranty claim. Return and Packing Instruction information will be provided at that time.

Replacement parts are available for purchase at ninjakitchen.com. For more information on which parts are classified as wearable and non-wearable, please visit ninjakitchen.com/warranty

This warranty gives you specific legal rights, and you may also have other rights that vary from state to state.

Some states do not permit the exclusion or limitation of incidental or consequential damages, so the above may not apply to you.



SharkNinja Operating LLC
US: Newton, MA 02459
CAN: Ville St-Laurent, QC H4S 1A7
1-877-646-5288
ninjakitchen.com

Illustrations may differ from actual product. We are constantly striving to improve our products; therefore the specifications contained herein are subject to change without notice.

NINJA is a registered trademark of SharkNinja Operating LLC.

PRECISION PROCESSOR is a trademark of SharkNinja Operating LLC.

For SharkNinja U.S. Patent information visit sharkninja.com/USPatents

