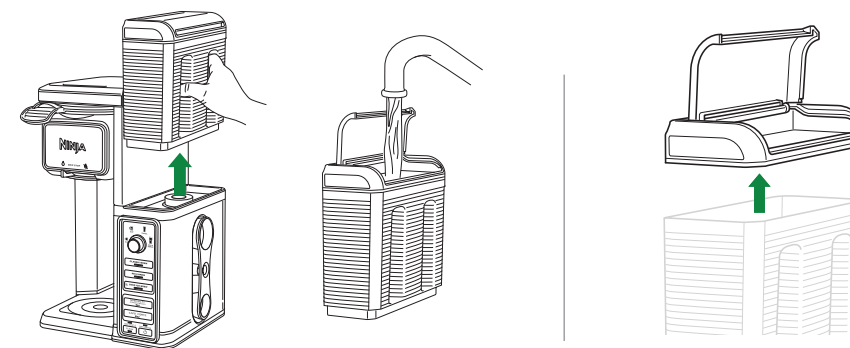


Please make sure to read the enclosed Ninja® Owner's Guide prior to using your unit.

NINJA® COFFEE BAR®

QUICK START GUIDE

1 FILLING THE WATER RESERVOIR



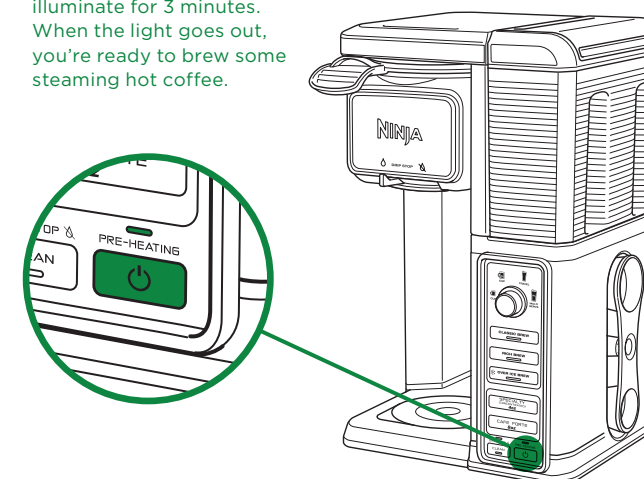
FILL TO THE MAX LINE.
Let Auto-iQ™ take it from there.

The water reservoir lid is removable for easy cleaning and is dishwasher safe.

2 PRE-HEAT FOR THE HOTTEST FIRST CUP

PLUG IN, POWER UP, AND PRE-HEAT

Plug in your brewer, then press the power button. The PRE-HEATING light will illuminate for 3 minutes. When the light goes out, you're ready to brew some steaming hot coffee.

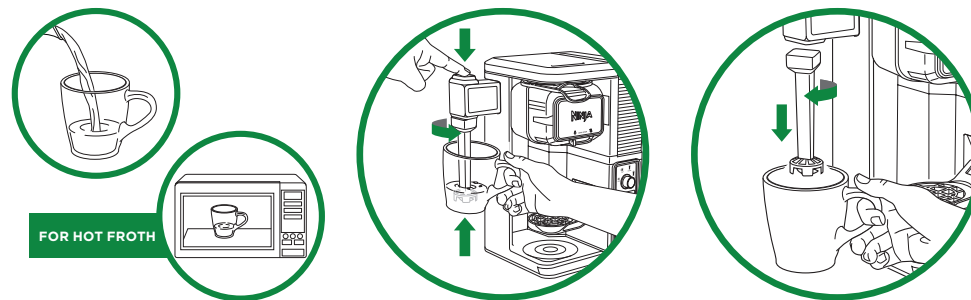


PRE-HEATING

Pre-heating ensures your first cup will be as hot as it possibly can be.

(But if you don't have time to wait, you can still brew before pre-heat is fully activated.)

HOT OR COLD FROTHING AT YOUR FINGERTIPS



FOR HOT FROTH

1. Add milk to your cup until it is about $\frac{1}{3}$ full.

* For cold froth, skip to Step 2.

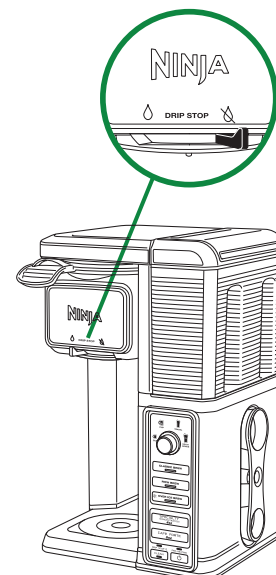
† For hot froth, microwave for 45-60 seconds.

2. Hold the cup under the frother and submerge the whisk just below the surface of the milk. Froth for 30-45 seconds.

3. Remove the frother whisk by twisting clockwise. Keep your cup below the whisk while you carry it to your sink or dishwasher for easy cleaning.

CAUTION: DO NOT reach across top of brewer to froth during brewing. Steam is released from vent on top of brewer and can result in a steam burn.

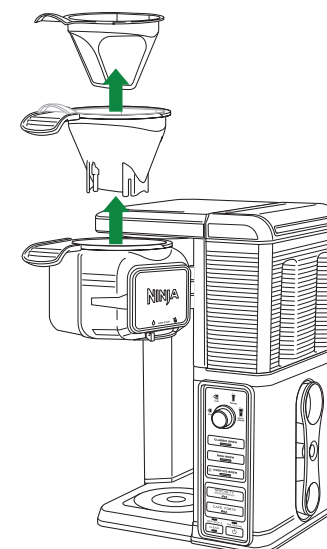
DRIP STOP



STOP THE DRIPS AFTER THE BREW

At the end of a brew, close the drip stop to prevent drops of coffee from escaping.

CLEANUP



REMOVABLE BREW BASKET FOR EASY CLEANUP

To avoid spills and drips, keep the filter inside the removable brew basket as you carry it to the trash.

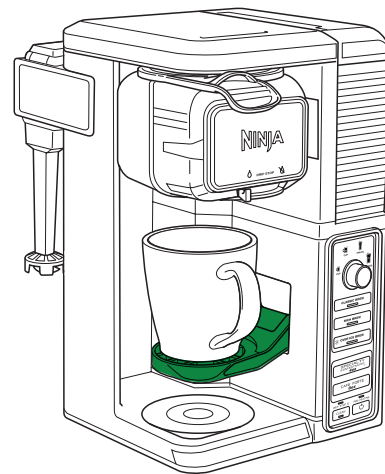
BEFORE YOUR FIRST BREW

Before first use, plug in your brewer and run two Multi-Serve Clean cycles. With your water reservoir filled to the max line with fresh water, your brewer plugged in, and a 22 oz. or larger container in place, press the CLEAN button to start a cycle.

(Discard the brewed water after each cleaning cycle.)

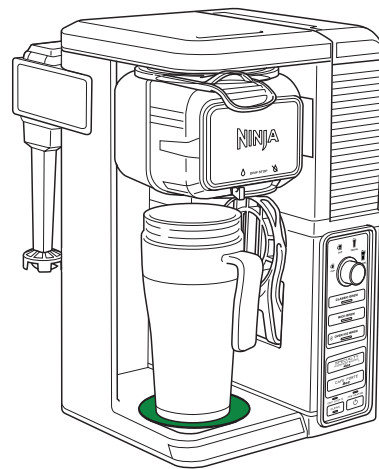
3 POSITIONING YOUR CUP OR MUG

CUP



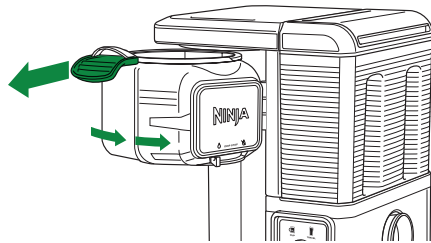
Pull down the cup platform to set your mug on it.

TRAVEL MUG



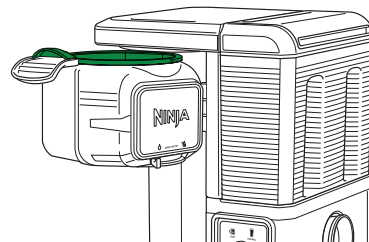
Place your XL Cup or XL Multi-Serve Tumbler on the base of the brewer.

4 CHOOSE YOUR FILTER



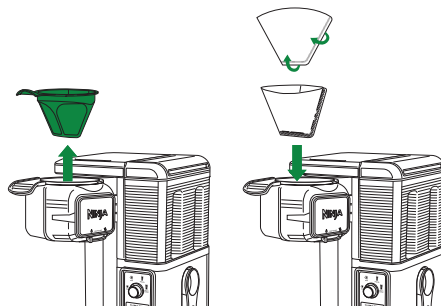
Pull the handle to swing the brew basket open.

IF USING PERMANENT FILTER



The permanent mesh filter is already in place—you can add your coffee directly into it.

IF USING PAPER FILTER



To use a paper filter, first remove the permanent filter, then fold a #2 paper cone filter along the seams and insert firmly into the removable filter carrier.

5 THE BREWING PROCESS—4 EASY STEPS

HOW TO BREW CLASSIC, RICH, OR OVER ICE



CLASSIC
Smooth, well-balanced flavor.



RICH
Richer than classic with more intense flavor that really stands up to milk, cream, or flavoring.

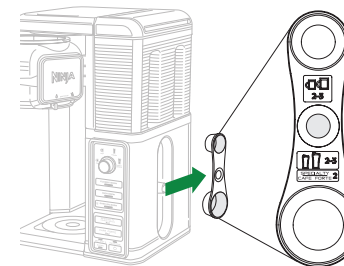


OVER ICE
Specially designed to brew hot over ice for freshly brewed iced coffee that is not watered down.

Always fill your cup or travel mug to the top with ice cubes before brewing.

IMPORTANT NOTICE: Do not brew into glassware.

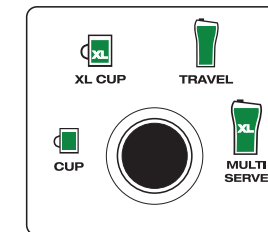
2 CHOOSE A SCOOP



Use these scoop measurements no matter which brew style you make.

SERVING SIZE	NINJA SCOOP™
CUP	2-3 small scoops
TRAVEL MUG	2-3 big scoops

3 CHOOSE A SIZE



Make sure to use a cup that is big enough for the brew size you've selected.

CUP	9.5 oz.
XL CUP	11.5 oz.
TRAVEL MUG	14 oz.
MULTI SERVE	18 oz.

*approximate brew volumes

4 CHOOSE A BREW

Simply press your desired brew type button and the brew will begin.

CLASSIC BREW

RICH BREW

OVER ICE BREW

THERE WILL BE A PAUSE. THAT'S OKAY.
The pause is just part of the pre-infusion cycle that unlocks the full flavor of your coffee.

HOW TO BREW SPECIALTY OR CAFE FORTE



SPECIALTY (4 OZ.)

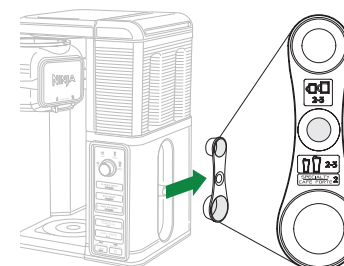
An extra-rich concentrate that allows you to create your favorite coffeehouse-style drinks, one cup at a time.



CAFE FORTE (8 OZ.)

A robust cupful of complex flavors, bringing out the nuances of your coffee, for a full-bodied gourmet experience to be enjoyed black or au lait.

2 CHOOSE A SCOOP



The double-sided Ninja Scoop™ has built-in markings to make measuring simple.

SERVING SIZE	NINJA SCOOP™
SPECIALTY (4 oz.)	2 big scoops
CAFE FORTE (8 oz.)	2 big scoops

3 NO NEED TO CHOOSE A SIZE

Our Specialty Brew is always 4 oz. and Cafe Forte is always 8 oz., so you don't need to choose a size for these one-touch brews.

4 CHOOSE A BREW

SPECIALTY (CONCENTRATED) 4oz

CAFE FORTE 8oz

THERE WILL BE A PAUSE. THAT'S OKAY.
The pause is just part of the pre-infusion cycle that unlocks the full flavor of your coffee.

See back page for Frothing, Drip Stop, and Cleanup.