

Please make sure to read the enclosed Ninja® Owner's Guide prior to using your unit.

## NINJA® SMART SCREEN™ KITCHEN SYSTEM

Customized power, speed, and pre-set programs for each attachment.  
Simply select from specially tailored smart programs on an easy-to-use touchscreen for consistent results with zero guesswork.

### SINGLE-SERVE CUP



#### SMOOTHIE

Fresh/Frozen Fruits  
Milk/Yogurt  
Protein Shakes

#### EXTRACT

Whole Fruits/Vegetables  
Fibrous Ingredients  
Seeds

#### FROZEN DRINK

Margaritas  
Daiquiris  
Milkshakes

### TOTAL CRUSHING® PITCHER



#### SMOOTHIE

Fresh/Frozen Fruits  
Milk/Yogurt  
Protein Shakes

#### ICE CREAM

Sorbet  
Sherbet  
Frozen Yogurt

#### PUREE

Hummus  
Pesto  
Sauces

#### FROZEN DRINK

Margaritas  
Daiquiris  
Milkshakes

### PRECISION PROCESSOR® BOWL



#### PUREE

Hummus  
Pesto  
Sauces

#### CHOP

Veggie Prep  
Salsas  
Mincing

### CLEANING

**Dishwasher:** The containers, lids, and blade assemblies are all dishwasher safe. The lids and blade assemblies are top-rack dishwasher safe. Ensure the blade assemblies are removed from the containers before placing in the dishwasher.

**Hand-washing:** Wash containers, lids, and blade assemblies in warm, soapy water. When washing the blade assemblies, use a dishwashing utensil with a handle to avoid direct hand contact with blades. Handle blade assemblies with care to avoid contact with sharp edges. Rinse and air-dry thoroughly.

Before first use, remove the protector from the touchscreen by pulling the **PEEL HERE** tab.

**Touchscreen:** Clean touchscreen with a soft dry cloth to avoid scratching. To remove residue from the screen, you may use an all-purpose cleaner.

**WARNING:** Always unplug your blender base before cleaning.

**WARNING:** Handle the blade assemblies with care when washing, as the blades are sharp. Contact with the blades' edges can result in laceration.

**QUESTIONS?** We're here to help. Call 1-877-646-5288 or visit [ninjakitchen.com](http://ninjakitchen.com)

Please make sure to read the enclosed Ninja® Owner's Guide prior to using your unit.

# NINJA® NINJA SMART SCREEN™ KITCHEN SYSTEM QUICK ASSEMBLY

## SINGLE-SERVE CUP

### PARTS



SINGLE-SERVE CUP



SPOUT LID



PRO EXTRACTOR  
BLADES® ASSEMBLY

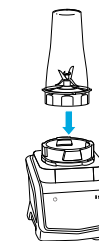
### ASSEMBLY



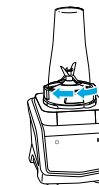
1. Fill Single-Serve Cup with desired contents.



2. Screw on Pro Extractor Blades Assembly clockwise until you have a tight seal.



3. Flip cup upside down and lower it onto base.



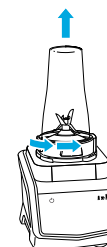
4. Turn cup clockwise to lock in place.

### BLEND & ENJOY

Connect the base to power source. Press and hold Power symbol. After the unit is turned on, display will read "1 2 3" until the cup is correctly connected to the base.



1. Select any of the illuminated programs to begin blending.



2. When blending is complete, turn cup counterclockwise and lift to remove.



3. Turn blade assembly counterclockwise to remove.



4. Place Spout Lid on top of cup and turn clockwise to lock in place.

Once a container is locked onto base, the program buttons compatible with that container will illuminate.

**WARNING:** Handle the Pro Extractor Blades Assembly with care, as the blades are sharp.

**QUESTIONS?** We're here to help. Call 1-877-646-5288 or visit [ninjakitchen.com](http://ninjakitchen.com)

# TOTAL CRUSHING® PITCHER

## PARTS

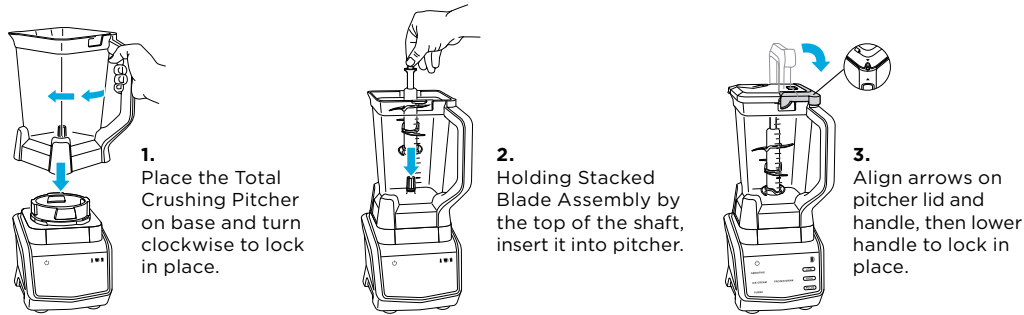


TOTAL CRUSHING PITCHER

PITCHER LID

STACKED BLADE ASSEMBLY

## ASSEMBLY



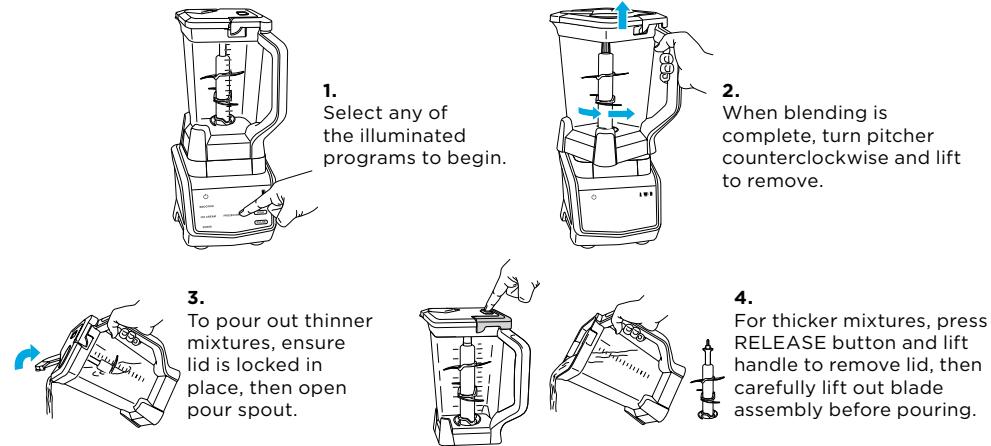
1. Place the Total Crushing Pitcher on base and turn clockwise to lock in place.

2. Holding Stacked Blade Assembly by the top of the shaft, insert it into pitcher.

3. Align arrows on pitcher lid and handle, then lower handle to lock in place.

## BLEND & ENJOY

Connect the base to power source. Press the Power symbol. After the unit is turned on, display will read "1 2 3" until the pitcher is correctly connected to the base.



1. Select any of the illuminated programs to begin.

2. When blending is complete, turn pitcher counterclockwise and lift to remove.

3. To pour out thinner mixtures, ensure lid is locked in place, then open pour spout.

4. For thicker mixtures, press RELEASE button and lift handle to remove lid, then carefully lift out blade assembly before pouring.

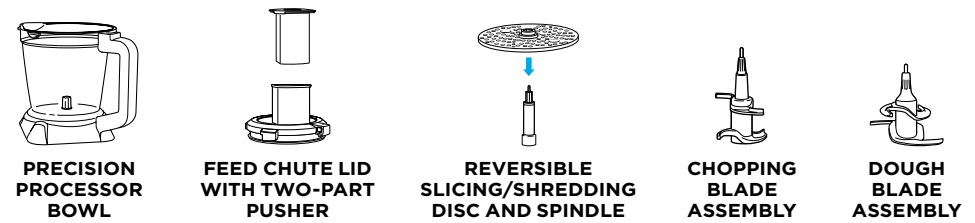
Once a container is locked onto base, the program buttons compatible with that container will illuminate.

**WARNING:** Stacked Blade Assembly is sharp and not locked in place. Make sure lid is locked onto pitcher before pouring contents. If pouring without lid, carefully remove blade assembly first. Failure to do so will result in a risk of laceration. Refer to the Ninja Owner's Guide for additional information.

QUESTIONS? We're here to help. Call 1-877-646-5288 or visit [ninjakitchen.com](http://ninjakitchen.com)

# PRECISION PROCESSOR® BOWL

## PARTS



PRECISION PROCESSOR BOWL

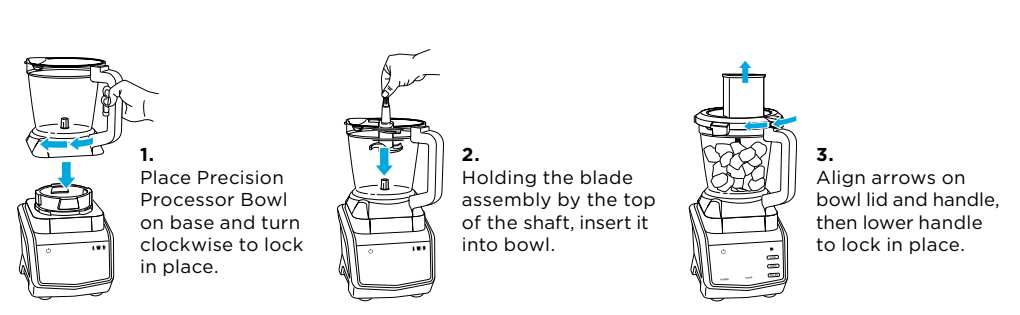
FEED CHUTE LID WITH TWO-PART PUSHER

REVERSIBLE SLICING/SHREDDING DISC AND SPINDLE

CHOPPING BLADE ASSEMBLY

DOUGH BLADE ASSEMBLY

## ASSEMBLY



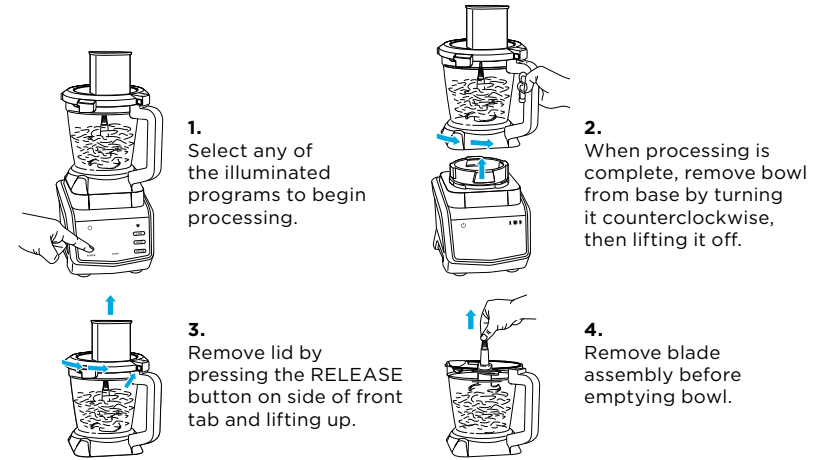
1. Place Precision Processor Bowl on base and turn clockwise to lock in place.

2. Holding the blade assembly by the top of the shaft, insert it into bowl.

3. Align arrows on bowl lid and handle, then lower handle to lock in place.

## BLEND & ENJOY

Connect the base to power source. Press the Power symbol. After the unit is turned on, display will flash "1 2 3" until the bowl is correctly connected to the base.



1. Select any of the illuminated programs to begin processing.

2. When processing is complete, remove bowl from base by turning it counterclockwise, then lifting it off.

3. Remove lid by pressing the RELEASE button on side of front tab and lifting up.

4. Remove blade assembly before emptying bowl.

Once a container is locked onto base, the program buttons compatible with that container will illuminate.

**WARNING:** Chopping Blade Assembly is sharp and not locked in place. Before pouring, carefully remove blade assembly. Failure to do so will result in a risk of laceration. Refer to the Ninja Owner's Guide for additional information.

QUESTIONS? We're here to help. Call 1-877-646-5288 or visit [ninjakitchen.com](http://ninjakitchen.com)