

Please make sure to read the enclosed Ninja® Owner's Guide prior to using your unit.

NINJA® INTELLI-SENSE™ KITCHEN SYSTEM

SMART VESSEL RECOGNITION

Smart Vessel Recognition intuitively displays advanced pre-set programs available for each container. Simply select from specially tailored programs on an easy-to-use touchscreen for consistent results with zero guesswork.

TOTAL CRUSHING® PITCHER



Smoothie

Fresh/Frozen Fruits
Milk/Yogurt
Protein Shakes

Frozen Drink

Margaritas
Daiquiris
Milkshakes

Ice Cream

Sorbet
Sherbet
Frozen Yogurt

Snow Cone

Granitas
Snow Cones
Fruit Slushies

HIGH-SPEED BLENDER CUP



Smoothie

Fresh/Frozen Fruits
Milk/Yogurt
Protein Shakes

Extract

Whole Fruits/Vegetables
Fibrous Ingredients
Seeds

Refresher

Fresh Fruits
Water/Coconut Waters
Herbs

Dressing

Marinades
Dressings
Condiments

PRECISION PROCESSOR™ BOWL



Puree

Hummus
Pesto
Sauces

Chop

Veggie Prep
Salsa
Mince

Dough

Pie Crust
Bread/Pizza Dough
Cookies

Dips

Salsa
Dips
Sauces

CLEANING

Dishwasher: The containers, lids, blade discs, and blade assemblies are all dishwasher safe. The lids, blade discs, and blade assemblies are top-rack dishwasher safe. Ensure the blade discs and blade assemblies are removed from the containers before placing in the dishwasher.

Hand-Washing: Wash containers, lids, blade discs, and blade assemblies in warm, soapy water. When washing the blade discs and blade assemblies, use a dishwashing utensil with a handle to avoid direct hand contact with blades. Handle blade discs and blade assemblies with care to avoid contact with sharp edges. Rinse and air-dry thoroughly.

Touchscreen: Clean touchscreen with a soft material to avoid scratching. To remove residue from the screen, you may use an all-purpose cleaner.

WARNING: Always unplug your blender base before cleaning.

WARNING: Handle the blade assemblies with care when washing, as the blades are sharp. Contact with the blades' edges can result in laceration.

QUESTIONS? We're here to help. Call 1-877-646-5288 or visit ninjakitchen.com

Please make sure to read the enclosed Ninja® Owner's Guide prior to using your unit.

NINJA® INTELLI-SENSE™ KITCHEN SYSTEM QUICK ASSEMBLY

HIGH-SPEED BLENDER CUP

PARTS



HIGH-SPEED BLENDER CUP

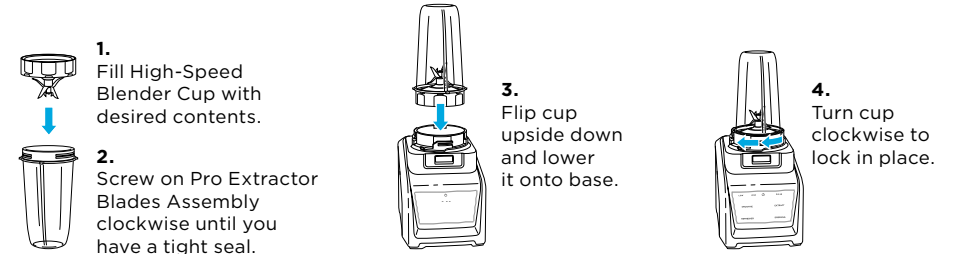


SPOUT LID



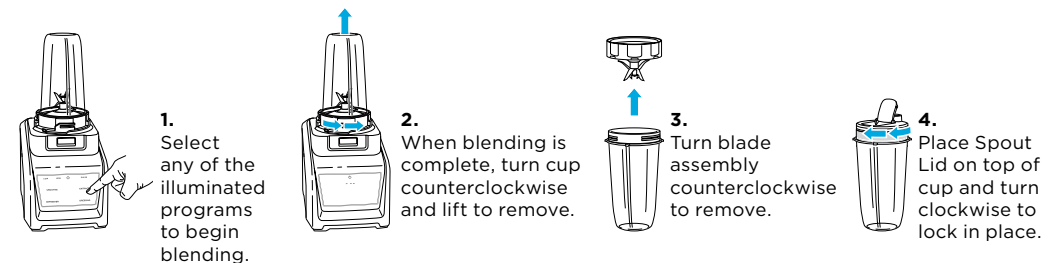
PRO EXTRACTOR BLADES® ASSEMBLY

ASSEMBLY



BLEND & ENJOY

Connect the base to power source. Press the Power symbol. After the unit is turned on, display will read "--" until the cup is correctly connected to the base.



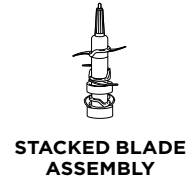
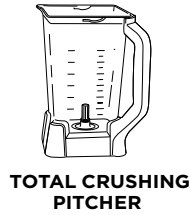
Once a container is locked onto base, the program buttons compatible with that container will illuminate.

WARNING: Handle the Pro Extractor Blades Assembly with care, as the blades are sharp.

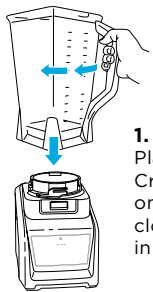
QUESTIONS? We're here to help. Call 1-877-646-5288 or visit ninjakitchen.com

TOTAL CRUSHING® PITCHER

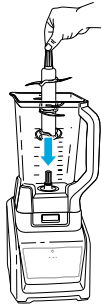
PARTS



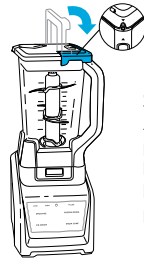
ASSEMBLY



1. Place the Total Crushing Pitcher on base and turn clockwise to lock in place.



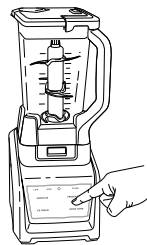
2. Holding Stacked Blade Assembly by the top of the shaft, insert it into pitcher.



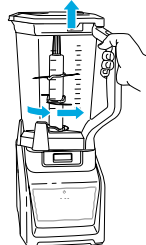
3. Align arrows on pitcher lid and handle, then lower handle to lock in place.

BLEND & ENJOY

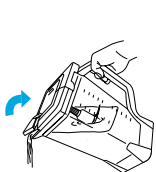
Connect the base to power source. Press the Power symbol. After the unit is turned on, display will read "--" until the pitcher is correctly connected to the base.



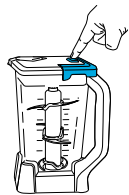
1. Select any of the illuminated programs to begin.



2. When blending is complete, turn pitcher counterclockwise and lift to remove.



3. To pour out thinner mixtures, ensure lid is locked in place, then open pour spout.



4. For thicker mixtures, press RELEASE button and lift handle to remove lid, then carefully lift out blade assembly before pouring.

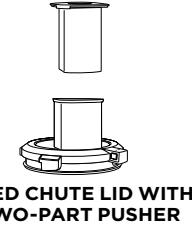
Once a container is locked onto base, the program buttons compatible with that container will illuminate.

! WARNING: Stacked Blade Assembly is sharp and not locked in place. Make sure lid is locked onto pitcher before pouring contents. If pouring without lid, carefully remove blade assembly first. Failure to do so will result in a risk of laceration. Refer to the Ninja Owner's Guide for additional information.

QUESTIONS? We're here to help. Call 1-877-646-5288 or visit ninjakitchen.com

PRECISION PROCESSOR™ BOWL

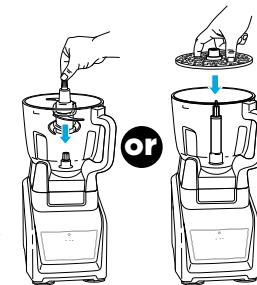
PARTS



ASSEMBLY



1. Place Precision Processor Bowl on base and turn clockwise to lock in place.



2. Holding the blade assembly by the top of the shaft or disc spindle and disc, insert them into the bowl.



3. Lower bowl lid onto bowl and turn clockwise to lock in place.

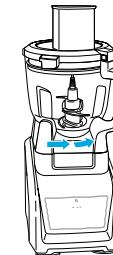
PROCESS & ENJOY

Connect the base to power source. Press the Power symbol. After the unit is turned on, display will read "--" until the bowl is correctly connected to the base.

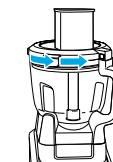


1. Food Processing: Select any of the illuminated programs to begin food processing.

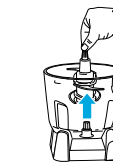
Slicing/Shredding: Select the LOW button when using the Blade Discs.



2. Remove bowl from base by turning it counterclockwise, then lifting it off.



3. Remove lid by pressing the RELEASE button on side of front tab, then twist lid counterclockwise and lift it off.



4. Remove blade assembly before emptying bowl.

Once a container is locked onto base, the program buttons compatible with that container will illuminate.

! WARNING: Chopping Blade Assembly is sharp and not locked in place. Before pouring, carefully remove blade assembly. Failure to do so will result in a risk of laceration. Refer to the Ninja Owner's Guide for additional information.

QUESTIONS? We're here to help. Call 1-877-646-5288 or visit ninjakitchen.com