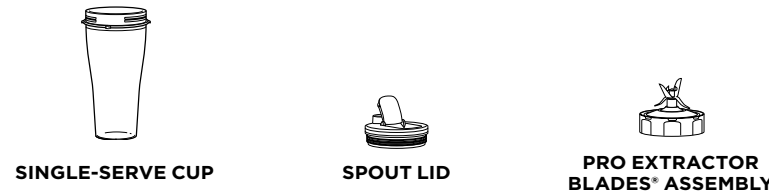


Please make sure to read the enclosed Ninja® Owner's Guide prior to using your unit.

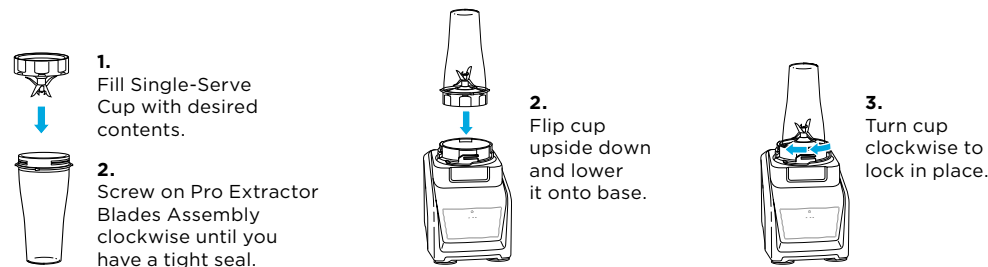
NINJA NINJA INTELLI-SENSE™ KITCHEN SYSTEM QUICK ASSEMBLY

SINGLE-SERVE CUP

PARTS

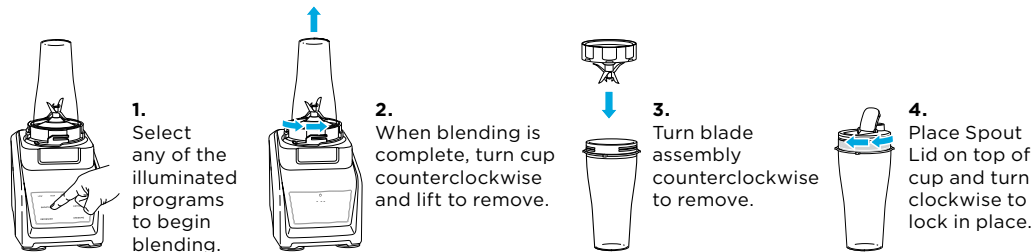


ASSEMBLY



BLEND & ENJOY

Connect the base to power source. Press and hold Power symbol. After the unit is turned on, display will read "--" until the cup is correctly connected to the base.



Once a container is locked onto base, the program buttons compatible with that container will illuminate.

WARNING: Handle the Pro Extractor Blades Assembly with care, as the blades are sharp.

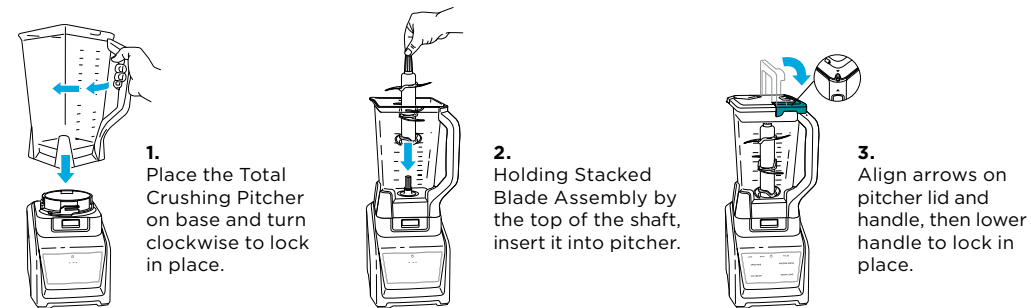
QUESTIONS? We're here to help. Call 1-877-646-5288 or visit ninjakitchen.com

TOTAL CRUSHING® PITCHER

PARTS

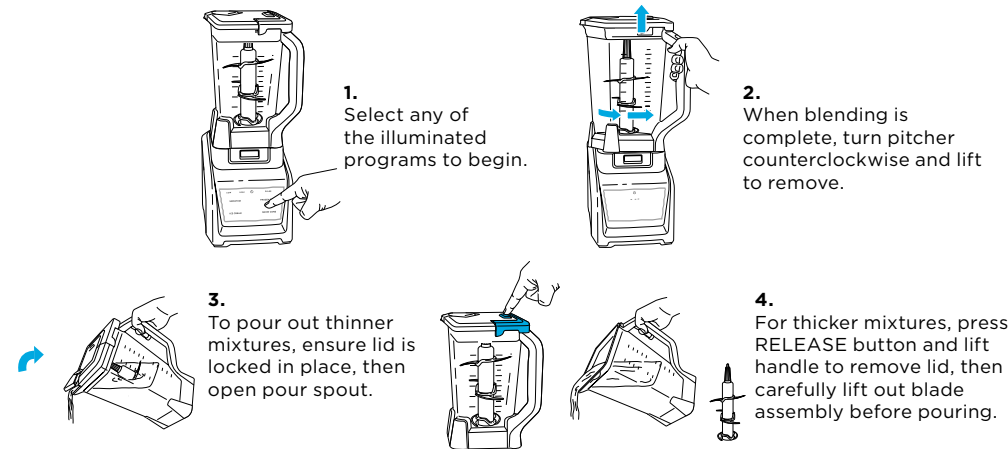


ASSEMBLY



BLEND & ENJOY

Connect the base to power source. Press and hold Power symbol. After the unit is turned on, display will read "--" until the pitcher is correctly connected to the base.



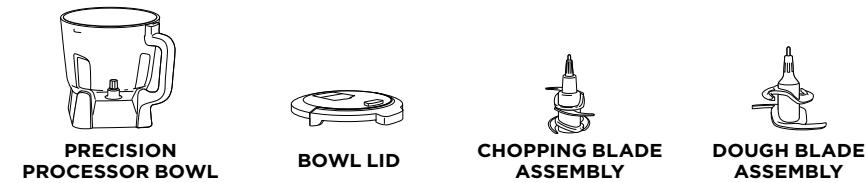
Once a container is locked onto base, the program buttons compatible with that container will illuminate.

WARNING: Stacked Blade Assembly is sharp and not locked in place. Make sure lid is locked onto the pitcher before pouring. If pouring without lid, carefully remove Stacked Blade Assembly first. Failure to do so will result in a risk of laceration. Refer to the Ninja Owner's Guide for additional information.

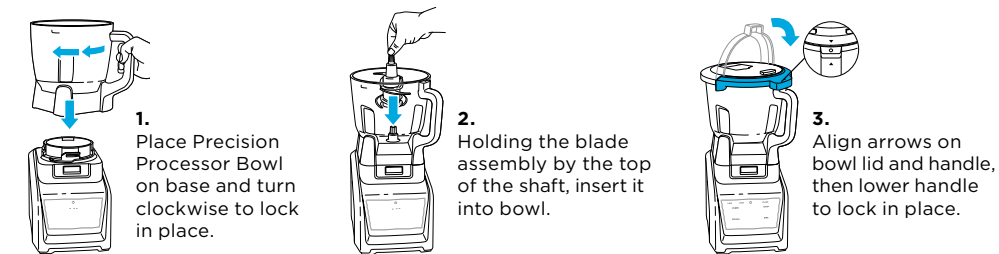
QUESTIONS? We're here to help. Call 1-877-646-5288 or visit ninjakitchen.com

PRECISION PROCESSOR™ BOWL

PARTS

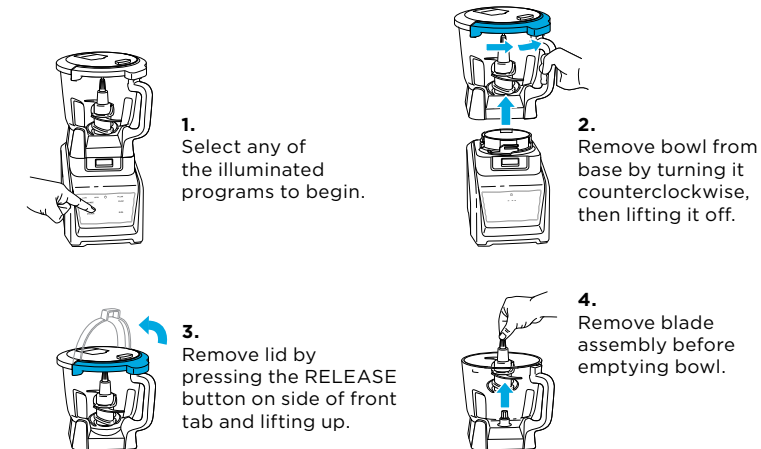


ASSEMBLY



PROCESS & ENJOY

Connect the base to power source. Press and hold Power symbol. After the unit is turned on, display will read "--" until the bowl is correctly connected to the base.



Once a container is locked onto base, the program buttons compatible with that container will illuminate.

WARNING: Chopping Blade Assembly is sharp and not locked in place. Before pouring, carefully remove blade assembly. Failure to do so will result in a risk of laceration. Refer to the Ninja® Owner's Guide for additional information.

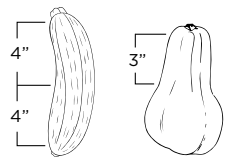
QUESTIONS? We're here to help. Call 1-877-646-5288 or visit ninjakitchen.com

OH THE PASTA-BILITIES

VISIT NINJAKITCHEN.COM FOR ACCESSORIES, RECIPES, AND MORE.

SPIRALIZER FOOD PREP

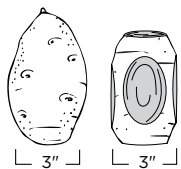
FOR BEST RESULTS, PREPARE YOUR INGREDIENTS BEFORE SPIRALIZING



Trim ingredients so they are no taller than the Feed Chute (4"). For butternut squash and potatoes, the max recommended height is 3".



Cut both ends off ingredient to create flat surfaces, helping to secure ingredient to both the Blade Disc pin and Food Pusher.



Cut ingredient so it is no more than 3" wide. Trim evenly from all sides to maintain a roughly cylindrical shape. **DO NOT** cut in half lengthwise.



Peel ingredients with tough skin, like sweet potatoes and butternut squash.



Trim tapered ingredients like carrots to make them more symmetrical. Ingredients must be larger than 1.5" in diameter.

Please make sure to read the enclosed Ninja® Owner's Guide prior to using your unit.

NINJA NINJA INTELLI-SENSE™ KITCHEN SYSTEM QUICK ASSEMBLY

AUTO-SPIRALIZER™

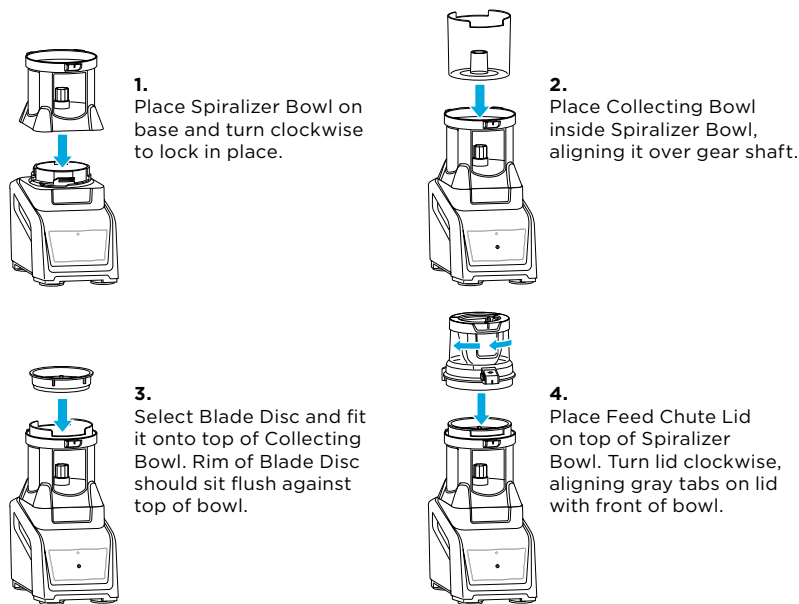
PARTS



SPIRALIZER BOWL **COLLECTING BOWL** **FEED CHUTE LID** **FOOD PUSHER** **BLADE DISC**

ASSEMBLY

Connect the base to power source. Press and hold Power symbol. After the unit is turned on, display will read "--" until the Auto-Spiralizer is correctly connected to the base.



Once a container is locked onto base, the program buttons compatible with that container will illuminate.

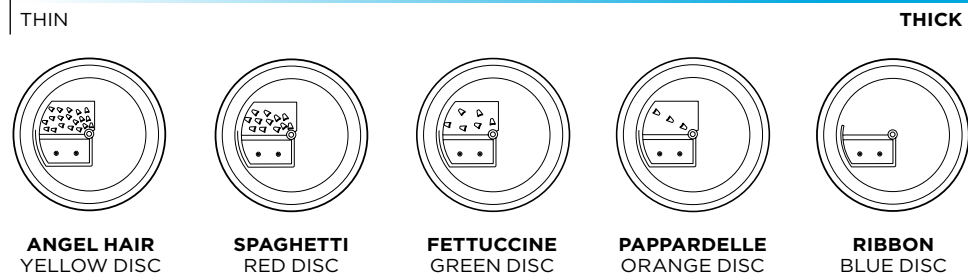
WARNING: Handle Blade Discs with care, as the blades are sharp.

QUESTIONS? We're here to help. Call 1-877-646-5288 or visit ninjakitchen.com

AUTO-SPIRALIZER™ CONT.

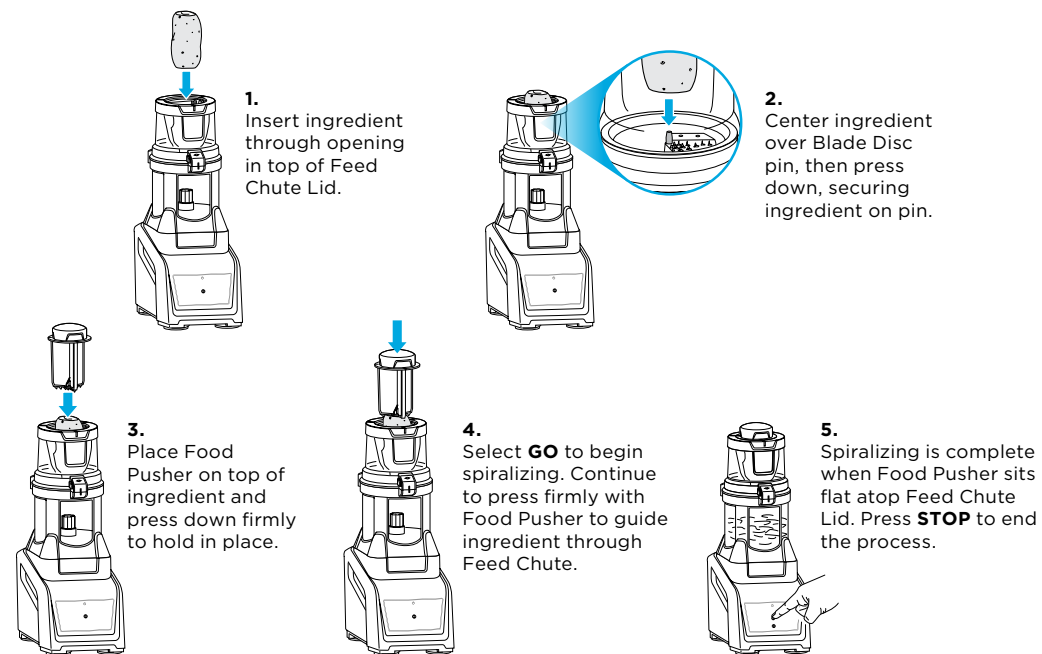
PASTA STYLES

SELECT DESIRED BLADE DISC PRIOR TO ASSEMBLY*



*Some Blade Discs might not be included with your unit. To see which Blade Discs come with your Ninja® Intelli-Sense™ Kitchen System, check the parts list on the top panel of your box. Additional Blade Discs can be purchased at ninjaaccessories.com

HOW TO SPIRALIZE



WARNING: Handle Blade Discs with care, as the blades are sharp.

WARNING: When using the Auto-Spiralizer, always use the Food Pusher. Never feed ingredients by hand or with other utensils. Failure to use the Food Pusher may cause personal injury.

QUESTIONS? We're here to help. Call 1-877-646-5288 or visit ninjakitchen.com

NINJA® INTELLI-SENSE™ KITCHEN SYSTEM

SMART VESSEL RECOGNITION

Smart Vessel Recognition intuitively displays advanced pre-set programs available for each container. Simply select from specially tailored programs on an easy-to-use touchscreen for consistent results with zero guesswork.

TOTAL CRUSHING® PITCHER



Smoothie
Fresh/Frozen Fruits
Milk/Yogurt
Protein Shakes

Frozen Drink
Margaritas
Daiquiris
Milkshakes

Ice Cream
Sorbet
Sherbet
Frozen Yogurt

Snow Cone
Granitas
Snow Cones
Fruit Slushies

SINGLE-SERVE CUP



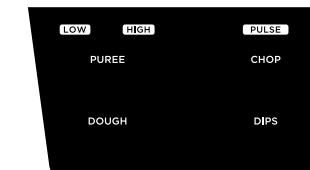
Smoothie
Fresh/Frozen Fruits
Milk/Yogurt
Protein Shakes

Extract
Whole Fruits/Vegetables
Fibrous Ingredients
Seeds

Refresher
Fresh Fruits
Water/Coconut Water
Herbs

Dressing
Marinades
Dressings
Condiments

PRECISION PROCESSOR™ BOWL



Puree
Hummus
Pesto
Sauces

Chop
Veggie Prep
Salsa
Mince

Dough
Pie Crust
Bread/Pizza Dough
Cookies

Dips
Salsa
Dips
Sauces

CLEANING

Dishwasher: The containers, lids, blade discs, and blade assemblies are all dishwasher safe. The lids, blade discs, and blade assemblies are top-rack dishwasher safe. Ensure the blade assemblies are removed from the containers before placing in the dishwasher.

Hand-Washing: Wash containers, lids, and blade assemblies in warm, soapy water. When washing the blade assemblies, use a dishwashing utensil with a handle to avoid direct hand contact with blades. Handle blade assemblies with care to avoid contact with sharp edges. Rinse and air-dry thoroughly.

Touchscreen: Clean touchscreen with a soft material to avoid scratching. To remove residue from the screen, you may use an all-purpose cleaner.

WARNING: Always unplug your blender base before cleaning.

WARNING: Handle the blade assemblies and blade discs with care when washing, as the blades are sharp. Contact with the blades' edges can result in laceration.

QUESTIONS? We're here to help. Call 1-877-646-5288 or visit ninjakitchen.com