

# NINJA®

## BL450

Series

---

### OWNER'S GUIDE






ninjakitchen.com

# THANK YOU FOR PURCHASING

The Nutri Ninja® Pro



## REGISTER YOUR PURCHASE

-  registeryourninja.com
-  1-877-646-5288
-  Scan QR code using mobile device

## RECORD THIS INFORMATION

Model Number: \_\_\_\_\_

Serial Number: \_\_\_\_\_

Date of Purchase: \_\_\_\_\_  
(Keep receipt)

Store of Purchase: \_\_\_\_\_

## TECHNICAL SPECIFICATIONS

Voltage: 120V~, 60Hz

Power: 900 Watts

## CUP CAPACITY:

24 oz (3 cups, 710 ml)

18 oz (2.25 cups, 530 ml)




**TIP:** You can find the model and serial numbers on the QR code label located on the back of the unit by the power cord.

# CONTENTS

<b>Important Safeguards</b> .....	<b>4</b>
<b>Getting to Know Your Nutri Ninja® Pro</b> .....	<b>6</b>
<b>Before First Use</b> .....	<b>6</b>
<b>Use</b> .....	<b>7</b>
<b>Suggested Uses</b> .....	<b>8</b>
<b>Care &amp; Maintenance</b> .....	<b>9</b>
<b>Troubleshooting Guide</b> .....	<b>10</b>
<b>Replacement Parts</b> .....	<b>10</b>
<b>Product Registration</b> .....	<b>10</b>
<b>Warranty</b> .....	<b>11</b>

# IMPORTANT SAFEGUARDS

HOUSEHOLD USE ONLY • READ ALL INSTRUCTIONS BEFORE USE

	<b>Read and review instructions for operation and use.</b>
	<b>Indicates the presence of a hazard that can cause personal injury, death or substantial property damage if the warning included with this symbol is ignored.</b>
	<b>For indoor and household use only.</b>
<b>When using electrical appliances, basic safety precautions should always be followed, including the following:</b>	

## WARNING

To reduce the risk of fire, electric shock, serious injury, death, or damage when using this appliance, follow these basic safety precautions.

### General Precautions

- 1 Read all instructions prior to using the appliance and its accessories.
- 2 Carefully observe and follow all warnings and instructions. This unit contains electrical connections and moving parts that potentially present risk to the user.
- 3 **ALWAYS** exercise care when handling the Pro Extractor Blades® Assembly. The blades are sharp, handle carefully. **ONLY** grasp the Pro Extractor Blades Assembly by the outer perimeter of the blade assembly base. Failure to use care when handling the blade assembly will result in a risk of laceration.
- 4 Take your time and exercise care during unpacking and appliance setup. This appliance contains sharp, loose blades that can cause injury if mishandled.
- 5 **DO NOT** blend hot liquids or carbonated liquids. Doing so may result in pressure buildup and steam exposure that can pose a risk of the user being burned.
- 6 Take inventory of all contents to ensure you have all parts needed to properly and safely operate your appliance.
- 7 Blades are sharp. Handle carefully.
- 8 Unplug the appliance from the outlet when not in use, before assembling or disassembling parts, and before cleaning. To unplug, grasp the plug by the body and pull from the outlet. **NEVER** unplug by grasping and pulling the flexible cord.

- 9 Before use, wash all parts that may contact food. Follow washing instructions covered in this instruction manual.
- 10 To protect against the risk of electric shock, **DO NOT** submerge the appliance or allow the power cord to contact any form of liquid.
- 11 **DO NOT** use this appliance outdoors. It is designed for indoor household use only.
- 12 This appliance has important markings on the plug blade. The attachment plug or entire cordset (if plug is molded onto cord) is not suitable for replacement. If damaged, the appliance shall be replaced.
- 13 This appliance has a polarized plug (one prong is wider than the other). To reduce the risk of electric shock, this plug will fit in a polarized outlet only one way. If the plug does not fit fully in the outlet, reverse the plug. If it still does not fit, contact a qualified electrician. **DO NOT** modify the plug in any way.
- 14 **DO NOT** operate any appliance with a damaged cord or plug, or after the appliance malfunctions or is dropped or damaged in any manner. This appliance has no user-serviceable parts. If damaged, contact SharkNinja for servicing.
- 15 Extension cords should **NOT** be used with this appliance.
- 16 **DO NOT** allow children to operate this appliance or use as a toy. Close supervision is necessary when any appliance is used near children.
- 17 This appliance is **NOT** intended to be used by people with reduced physical, sensory, or mental capabilities, or lack of experience and knowledge, unless they have been given supervision or instruction concerning use of the appliance by a person responsible for their safety.

- 18 Before each use, inspect blade assembly for damage. If a blade is bent or damage is suspected, contact SharkNinja to arrange for replacement.
- 19 **DO NOT** attempt to sharpen blades.
- 20 **DO NOT** allow the unit or the cord to hang over the edges of tables or counters. The cord may become snagged and pull the appliance off the work surface.
- 21 **DO NOT** allow any part of the unit to contact hot surfaces, including stoves and other heating appliances.
- 22 **ALWAYS** use the appliance on a dry and level surface.
- 23 **NEVER** place a blade assembly on the motor base without it first being attached to the cup.
- 24 Keep hands, hair, and clothing out of the container when loading and operating
- 25 **ONLY** use attachments and accessories that are provided with the product or are recommended by SharkNinja. The use of attachments not recommended or sold by SharkNinja may cause fire, electric shock, or injury.
- 26 During operation and handling of the appliance, avoid contact with moving parts.
- 27 **DO NOT** operate the appliance with an empty container.
- 28 **DO NOT** fill containers past the **MAX FILL** or **MAX LIQUID** lines.
- 29 **DO NOT** microwave any containers or accessories provided with the appliance.
- 30 **DO NOT** perform grinding operations.
- 31 Before operation, ensure all utensils are removed from containers. Failure to remove utensils can cause containers to shatter and potentially result in personal injury and property damage.
- 32 **NEVER** operate the appliance without lids and caps in place. **DO NOT** attempt to defeat the interlock mechanism. Ensure the container and lid are properly installed before operation.

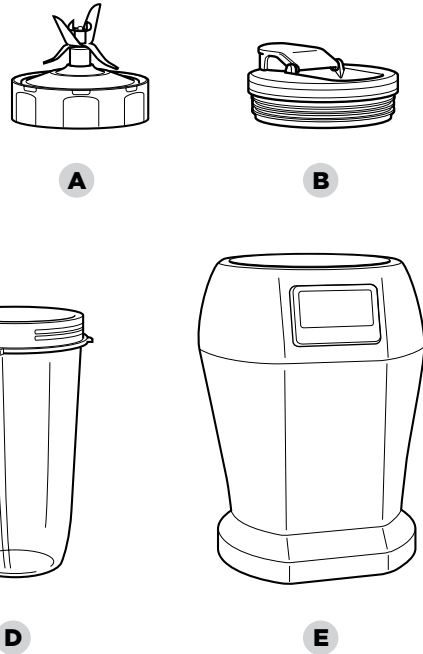
- 33 **DO NOT** expose the containers and accessories to extreme temperature changes. They may experience damage.
- 34 **NEVER** leave the appliance unattended while in use.
- 35 If you find unmixed ingredients sticking to the sides of the cup, stop the appliance, remove the blade assembly, and use a scraper to dislodge ingredients.
- 36 **DO NOT** attempt to remove the container and lids from the motor base while the blade assembly is still spinning. Allow the appliance to come to a complete stop before removing lid and container.
- 37 Remove the Pro Extractor Blades® Assembly from the Single-Serve Cup upon completion of blending. **DO NOT** store ingredients before or after blending them in the cup with the blade assembly attached. Some foods may contain active ingredients or release gases that will expand if left in a sealed container, resulting in excessive pressure buildup that can pose a risk of injury. For ingredient storage in the cup, use only Spout Lid to cover.
- 38 If the appliance overheats, a thermal switch will activate and temporarily disable the motor. To reset, unplug the appliance and allow it to cool for approximately 15 minutes before using again.
- 39 The maximum wattage rating for this appliance is based on the configuration of the Pro Extractor Blades Assembly and Single-Serve Cup. Other configurations may draw less power or current.
- 40 **DO NOT** process dry ingredients without adding liquid to the Single-Serve Cup. They are not intended for dry blending.
- 41 To protect against risk of electrical shock, **DO NOT** immerse the motor base in water or other liquid. Unplug the motor base before cleaning.

## SAVE THESE INSTRUCTIONS

# GETTING TO KNOW YOUR NUTRI NINJA® PRO

## MAIN UNIT

- A** Pro Extractor Blades® Assembly
- B** Spout Lid (x2)
- C** 18 oz. Nutri Ninja Cup
- D** 24 oz. Nutri Ninja Cup
- E** Motor Base
- F** Power Cord (not shown)



**NOTE:** Number and size of Single-Serve Cups/Spout Lids vary by model.

## BEFORE FIRST USE

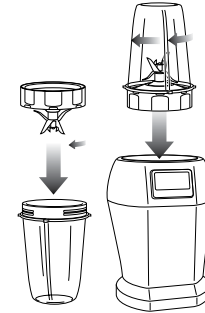
- 1** Remove all packaging material and labels from the appliance. Separate/remove all parts from each other.
- 2** Wash the lids, Nutri Ninja cups and Pro Extractor Blades Assembly in warm, soapy water. When washing the Pro Extractor Blades Assembly, use a dish-washing utensil with a handle to avoid direct hand contact with blades.
- 3** Handle blade assemblies with care to avoid contact with sharp edges. Rinse and air dry thoroughly.
- 4** The lids, Nutri Ninja Cups, and Pro Extractor Blades Assembly are all dishwasher safe. It is recommended that the lids and Pro Extractor Blades Assembly be placed on the top rack. Ensure that the Pro Extractor Blades Assembly is removed from the cups before placing in the dishwasher.
- 5** Wipe the motor base clean with a damp cloth.

## USE

**IMPORTANT:** Review all warnings on pages 4-5 before proceeding.

### TIPS:

- For best results, use short “PULSES”.



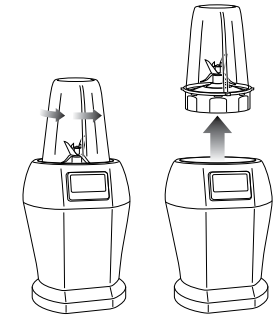
### ASSEMBLY

- 1** Place the motor base on a clean, dry, level surface such as a counter or table top. Add ingredients to the Nutri Ninja® cup. Place the Pro Extractor Blades® Assembly onto the cup and twist it on tightly until you have a good seal.
- NOTE:** Do not overfill! To avoid spilling, do not add ingredients past the “MAX” fill line.
- 2** Turn the cup upside down and place it onto the motor base, aligning the tabs on the cup with the motor base. Turn it clockwise, the unit is ready for use.



### PULSE

- 3** Press down on the top of the cup in short intervals to activate.



### REMOVAL

- 4** When you have reached your desired consistency, stop the appliance by removing your hand from the cup. Wait for the motor to stop running. Then turn the cup counterclockwise and pull straight up to remove.



- 5** Turn the cup upright and remove the Pro Extractor Blades Assembly by twisting the Pro Extractor Blades Assembly counterclockwise.
- 6** Do not store blended contents with the Pro Extractor Blade Assembly attached.
- 7** Place the spout lid onto the cup, twist to seal and enjoy!
- 8** For storage, only use spout lid to cover.
- 9** Be sure to store the Pro Extractor Blades Assembly attached to an empty cup when not in use.
- 10** Make sure that the motor base is unplugged when not in use.

## SUGGESTED USES

PURPOSE / FUNCTION	SUGGESTED CUP	TYPE OF FOOD
Chopping / Pulsing	18 oz. 24 oz.	Salsa Leafy Herbs
Mixing	18 oz. 24 oz.	Batters Dips
Sauces*	18 oz. 24 oz.	Vinaigrettes Salad Dressings Simple Sauces*
Frozen Blending	18 oz. 24 oz.	Ice Frozen Fruit Ice Cream
Nutrient Juices/Smoothies	18 oz. 24 oz.	Fruits Vegetables Leafy Greens

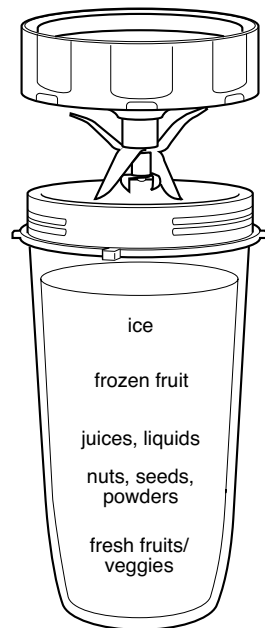
\* When blending sauces, make sure they're cooled to room temperature first. Ninja® containers are not intended for hot blending.

**⚠ CAUTION: DO NOT process dry ingredients without adding liquid to the cup. This product is not intended for dry blending.**

### FILLING YOUR NUTRI NINJA®

For best results, always follow recipe directions when filling your Nutri Ninja cups. When you're not using a recipe, use the following guidelines:

Start with your fresh fruit or veggies. Then add any nuts, seeds or powder followed by any liquids like juice or milk. More liquid can help to integrate powder. Then add your frozen fruit and ice. Remember to securely tighten the blade and don't overfill the cups.



## CARE & MAINTENANCE

### CLEANING

- 1 Separate/remove all parts from each other.
- 2 **Hand-Washing**  
Wash the lids, Nutri Ninja® cups and Pro Extractor Blades® Assembly in warm, soapy water. When washing the Pro Extractor Blades Assembly, use a dish-washing utensil with a handle to avoid direct hand contact with blades. Handle Pro Extractor Blades Assembly with care to avoid contact with sharp edges. Rinse and air dry thoroughly.

### Dishwasher

Containers, lids, and Pro Extractor Blades Assembly are all top-rack dishwasher safe. Ensure the Pro Extractor Blades Assembly is removed from the container before placing in the dishwasher.

- 3 Wipe the motor base clean with a damp cloth

If the appliance needs servicing, please call customer service at 1-877-646-5288.

### STORING

Store the Nutri Ninja Pro upright with the blade assembly attached to the Nutri Ninja Cup. Do not place anything on top. Store the rest of the attachments in a safe place where they will not be damaged and won't cause harm. Loosely wrap the power cord around the cord wrap.

**NOTE: Do not store blended or unblended ingredients in the Nutri Ninja Cup with the blade assembly attached.**

### RESETTING THE MOTOR THERMOSTAT

The Nutri Ninja Pro features a unique safety system which prevents damage to the unit's motor and drive system should you inadvertently overload your appliance. If the appliance is being overloaded, the motor will stop. To reset the appliance, follow the resetting procedure below:

- 1 Unplug the appliance from the electrical outlet.
- 2 Remove and empty the cup and ensure that no food is jamming the Pro Extractor Blades Assembly.
- 3 Allow the appliance to cool for approximately 30 minutes.
- 4 Re-install the cup onto the base and re-plug the appliance into the electrical outlet.
- 5 Proceed to use the appliance as before while making sure not to exceed the recommended maximum capacities.

# TROUBLESHOOTING GUIDE

**WARNING: To reduce the risk of shock and unintended operation, turn power off and unplug unit before troubleshooting.**

**Motor doesn't start or Pro Extractor Blades® Assembly doesn't rotate.**

- For the cups, make sure that the tabs are seated in the slots and turned clockwise.

**Food is unevenly chopped.**

- Either you are chopping too much food at once, or you are not pulsing properly.
- Reduce the amount of food in the cup.

**Food is too finely chopped or too watery.**

- The food has been over processed. Use short pulses for best results. Press down on the cup in short intervals.

**Cup is leaking.**

- Make sure that your lid or blade assembly is properly assembled to the cup. Leaking may occur if it is misaligned when twisted onto the cup. Turn the lid tightly clockwise.

**Unit doesn't turn on.**

- Make sure the unit is plugged in.
- Rotate and press down on the cup to turn the unit on.
- Make sure the Pro Extractor Blades Assembly is properly assembled to the cup and that it is not misaligned.

**Unit doesn't turn off.**

- Unplug the power cord from the electrical outlet and call customer service for support.

**Doesn't mix well.**

- Pulse ingredients for best results. Press down on the cup in short intervals for even blending and chopping. For frozen ingredients, pulse in short intervals of 2-5 seconds and repeat.

**Lid/blade assembly will not properly align to the cup.**

- Set the cup on a level surface. Place the lid or Pro Extractor Blades Assembly on top of the cup and align the threads so that the lid/blades sit flat on the cup. Twist clockwise so that the lid/blades evenly align to the cup until you have a tight seal.

# REPLACEMENT PARTS

To order additional parts and accessories, visit [ninjaaccessories.com](http://ninjaaccessories.com) or contact Customer Service at **1-877-646-5288**.

# PRODUCT REGISTRATION

Please visit [registeryourninja.com](http://registeryourninja.com) or call 1-877-646-5288 to register your new Ninja® product within ten (10) days of purchase. You will be asked to provide the store name, date of purchase, and model number along with your name and address.

The registration will enable us to contact you in the unlikely event of a product safety notification. By registering, you acknowledge you have read and understood the instructions for use and warnings set forth in the accompanying instructions.

## ONE (1) YEAR LIMITED WARRANTY

The One (1) Year Limited Warranty applies to purchases made from authorized retailers of **SharkNinja Operating LLC**. Warranty coverage applies to the original owner and to the original product only and is not transferable.

SharkNinja warrants that the unit shall be free from defects in material and workmanship for a period of one (1) year from the date of purchase when it is used under normal household conditions and maintained according to the requirements outlined in the Owner's Guide, subject to the following conditions and exclusions:

**What is covered by this warranty?**

1. The original unit and/or non-wearable parts deemed defective, in SharkNinja's sole discretion, will be repaired or replaced up to one (1) year from the original purchase date.
2. In the event a replacement unit is issued, the warranty coverage ends six (6) months following the receipt date of the replacement unit or the remainder of the existing warranty, whichever is later. SharkNinja reserves the right to replace the unit with one of equal or greater value.

**What is not covered by this warranty?**

1. Normal wear and tear of wearable parts (such as blending vessels, lids, blades, blender bases, etc.), which require regular maintenance and/or replacement to ensure the proper functioning of your unit, are not covered by this warranty. Replacement parts are available for purchase at [ninjaaccessories.com](http://ninjaaccessories.com).
2. Any unit that has been tampered with or used for commercial purposes
3. Damage caused by misuse, abuse, negligent handling, failure to perform required maintenance (e.g., failure to keep the well of the motor base clear of food spills and other debris), or damage due to mishandling in transit.
4. Consequential and incidental damages.
5. Defects caused by repair persons not authorized by SharkNinja. These defects include damages caused in the process of shipping, altering, or repairing the SharkNinja product (or any of its parts) when the repair is performed by a repair person not authorized by SharkNinja.
6. Products purchased, used, or operated outside North America.

**How to get service**

If your appliance fails to operate properly while in use under normal household conditions within the warranty period, visit [ninjakitchen.com/support](http://ninjakitchen.com/support) for product care and maintenance self-help. Our Customer Service Specialists are also available at **1-877-646-5288** to assist with product support and warranty service options, including the possibility of upgrading to our VIP warranty service options for select product categories. So we may better assist you, please register your product online at [registeryourninja.com](http://registeryourninja.com) and have the product on hand when you call.

SharkNinja will cover the cost for the customer to send in the unit to us for repair or replacement. A fee of \$20.95 (subject to change) will be charged when SharkNinja ships the repaired or replacement unit.

**How to initiate a warranty claim**

You must call **1-877-646-5288** to initiate a warranty claim. You will need the receipt as proof of purchase. We also ask that you register your product online at [registeryourninja.com](http://registeryourninja.com) and have the product on hand when you call, so we may better assist you. A Customer Service Specialist will provide you with return and packing instruction information.

**How state law applies**

This warranty gives you specific legal rights, and you also may have other rights that vary from state to state. Some states do not permit the exclusion or limitation of incidental or consequential damages, so the above may not apply to you.

**SharkNinja Operating LLC**  
**US: Needham, MA 02494**  
**1-877-646-5288**  
**ninjakitchen.com**

Illustrations may differ from actual product. We are constantly striving to improve our products; therefore the specifications contained herein are subject to change without notice.

NINJA, NUTRI NINJA, and PRO EXTRACTOR BLADES are registered trademarks of SharkNinja Operating LLC.

This product may be covered by one or more U.S. patents.  
See [sharkninja.com/patents](http://sharkninja.com/patents) for more information.

© 2022 SharkNinja Operating LLC

BL450Series\_IB\_30\_E\_REV\_Mv7



**@ninjakitchen**