

# NUTRI NINJA®

BL482Q  
OWNER'S GUIDE



[www.ninjakitchen.com](http://www.ninjakitchen.com)

# IMPORTANT SAFETY INSTRUCTIONS

## For Household Use Only

WHEN USING ELECTRICAL APPLIANCES, BASIC SAFETY PRECAUTIONS SHOULD ALWAYS BE FOLLOWED, INCLUDING THE FOLLOWING:

READ ALL INSTRUCTIONS BEFORE USING YOUR NUTRI NINJA® WITH AUTO-iQ®.

### POLARIZED PLUG

**⚠ WARNING:** To reduce the risk of electric shock, this appliance has a polarized plug (one blade is wider than the other). This plug will fit into a polarized outlet only one way. If the plug does not fit fully into the outlet, reverse the plug. If it still does not fit, contact a qualified electrician to install the proper outlet. **DO NOT modify the plug in any way.**

**⚠ WARNING:** Extension cords are not recommended for use with this product.

---

THIS BOOK COVERS MODEL NUMBER:  
BL482Q 30

### TECHNICAL SPECIFICATIONS

Voltage: 120V., 60Hz.  
Power: 1100 Watts

### Cup Capacity:

32 ounces (4 cups)  
24 ounces (3 cups)  
18 ounces (2.25 cups)  
12 ounces (1.5 cups)

**NOTE:** Select accessories are included. Other are available for purchase at [www.ninjakitchen.com](http://www.ninjakitchen.com). To see what is included with this model, please refer to the packaging.

**⚠ WARNING:** TO REDUCE THE RISK OF FIRE, ELECTRIC SHOCK OR INJURY:

- 1 ⚠ WARNING:** Remove utensils prior to processing. Failure to remove may cause the jar to be damaged or to shatter which may cause personal injury.
- 2 ⚠ CAUTION:** Do not blend hot liquids, doing so may cause excessive pressure build-up, resulting in risk of the user being burned.
- 3 ⚠ CAUTION:** We do not recommend grinding in any of our Nutri Ninja® Cups.
- 4 ⚠ CAUTION:** **DO NOT process dry ingredients without adding liquid to the cup. This product is not intended for dry blending.**
- 5 ⚠ CAUTION:** Remove the Pro Extractor Blades® Assembly from the Nutri Ninja cup upon completion of blending. Do not store ingredients before or after blending them in the cup with the blade assembly attached. Some foods may contain active ingredients or release gases that will expand if left in a sealed container, resulting in excessive pressure buildup that can pose a risk of injury. For ingredient storage in the cup, use only Sip & Seal® Lid to cover.
- 6** To protect against electrical shock, do not submerge the appliance or allow the power cord to come into contact with water or any other liquid.



- 7 **DO NOT** allow the appliance to be used by children. Close **supervision** is necessary when used near children. This is not a toy.
- 8 Never leave an appliance unattended when in use.
- 9 Appliance accessories are not intended to be used in the microwave as it may result in damage to the accessories.
- 10 Remove the power cord from the electrical outlet when not in use, before assembling or disassembling parts and before cleaning. To unplug, grasp the plug and pull from the electrical outlet. Never pull from the power cord.
- 11 **DO NOT** abuse the power cord. Never carry the appliance by the power cord or yank it to disconnect from electrical outlet; instead grasp the plug and pull to disconnect.
- 12 **DO NOT** operate any appliance with a damaged cord or plug, or after the appliance malfunctions, has been dropped or damaged in any manner. This appliance has no serviceable parts. Return the appliance to SharkNinja Operating LLC for examination, repair or adjustment.
- 13 **DO NOT** let the power cord hang over the edge of table or counter or touch hot surfaces such as the stove.
- 14 Always use appliance on a dry, level surface.
- 15 Keep hands, hair, clothing, as well as utensils out of container while processing to reduce the risk of severe injury to persons or damage to the appliance. A scraper may be used but only when the appliance is not running.
- 16 Avoid contact with moving parts.
- 17 **DO NOT** attempt to sharpen blades.
- 18 **DO NOT** use the appliance if blade assembly is bent or damaged.
- 19 To reduce risk of injury, never place the blade assembly on base without the Nutri Ninja® Cup properly attached.
- 20 **DO NOT** operate this appliance on or near any hot surfaces (such as gas or electric burner or in a heated oven).
- 21 The use of attachments or accessories including canning jars, not recommended by the manufacturer may result in fire, electric shock or personal injury.
- 22 **DO NOT** remove the cup from the motor base while the appliance is in operation.
- 23 To reduce the risk of injury, **NEVER** operate the appliance without the lid in place; **DO NOT** try to defeat the interlock mechanism; make sure that the attachment is properly installed before operating the appliance.
- 24 **DO NOT** expose cups to extreme temperature changes.
- 25 **DO NOT** overfill.
- 26 **DO NOT** operate the appliance empty.
- 27 If the appliance overheats, a thermal switch will become activated and shut off the motor. To reset, unplug the appliance and let it cool down for approximately 30 minutes before using again.
- 28 **THIS PRODUCT IS INTENDED FOR HOUSEHOLD USE ONLY.** Do not use this appliance for anything other than its intended use. Do not use outdoors.

# SAVE THESE INSTRUCTIONS

## What's Inside



Pro Extractor  
Blades® Assembly



Shaker Lid



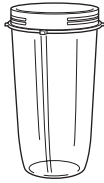
(3) Sip & Seal®  
Lid



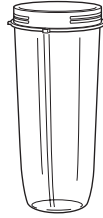
Mini 12 oz.  
Nutri Ninja® Cup



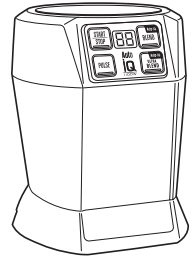
Small 18 oz.  
Nutri Ninja Cup



Regular 24 oz.  
Nutri Ninja Cup



Jumbo Multi Serve  
32 oz. Nutri Ninja Cup



Motor Base

**NOTE: The quantity, sizes, and presence of some accessories depends on the specific model configuration. All configurations include a motor base, blade assembly, certain Nutri Ninja® cups, Sip & Seal® Lids, and instructions.**

---

## Before First Use

### PLEASE KEEP THESE IMPORTANT SAFEGUARDS IN MIND WHEN USING THE APPLIANCE:

**IMPORTANT: Make sure that the motor base is plugged in for use.**

**IMPORTANT: DO NOT attempt to operate the appliance without the lid on.**

**IMPORTANT: Never run the appliance empty.**

**IMPORTANT: Appliance accessories are not intended to be used in the microwave as it may result in damage to the accessories.**

**⚠ CAUTION: Do not immerse the motor base into water or any other liquid.**

**1** Remove all packaging material and labels from the appliance. Separate/remove all parts from each other.

**2** Wash the lids, cups and Pro Extractor Blades® Assembly in warm, soapy water. When washing the Pro Extractor Blades Assembly, use a dish-washing utensil with a handle to avoid direct hand contact with blades.

**⚠ WARNING: Handle the Pro Extractor Blade Assembly with care when washing, as the blades are sharp.**

**3** Handle blade assemblies with care to avoid contact with sharp edges. Rinse and air dry thoroughly.

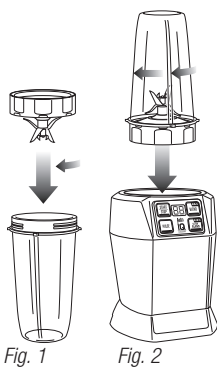
**4** The containers, lids, blade assembly and attachments are all dishwasher safe. The lids and blade assembly are top rack dishwasher safe. Ensure that the blade assembly is removed from the containers before placing in the dishwasher.

**5** Wipe the motor base clean with a damp cloth.

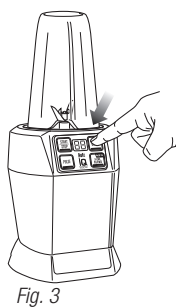
## Use

- ⚠ WARNING: Handle the Pro Extractor Blades® Assembly with care, as the blades are sharp.**
  - ⚠ WARNING: Never leave the appliance unattended while in use.**
  - ⚠ WARNING: Remove utensils prior to processing. Failure to remove may cause the bowl to be damaged or to shatter, which may cause personal injury.**
  - ⚠ CAUTION: Do not blend hot liquids, doing so may cause excessive pressure buildup, resulting in risk of the user being burned.**
  - ⚠ CAUTION: Remove the Pro Extractor Blades Assembly from the cup upon completion of blending. Do not store ingredients before or after blending in the Nutri Ninja cup with the blade assembly attached. Some foods may contain active ingredients or release gases which will expand if left in a sealed container, resulting in excessive pressure buildup that can pose a risk of injury. For storage, only use Sip & Seal® Lid to cover.**
- IMPORTANT: Make sure that the motor base is plugged in for use.**

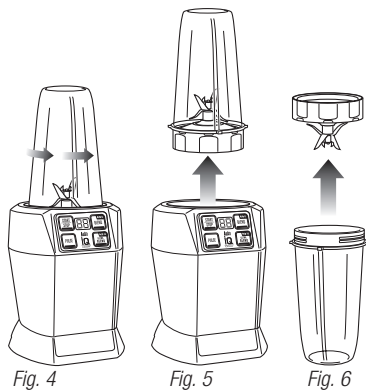
### ASSEMBLY



### USE



### REMOVAL



- 1** Review warning and caution statements above before proceeding to number 2.
- 2** Place the motor base on a clean, dry, level surface such as a counter or table top.
- 3** Make sure that the motor base is plugged in for use. Display will read "--".
- 4** Add ingredients to the Nutri Ninja® cup.  
**NOTE:** Do not overfill! To avoid spilling, do not add ingredients past the "MAX" fill line.
- 5** Place the Pro Extractor Blades Assembly onto the cup and twist it on tightly until you have a good seal. (Fig. 1)
- 6** Turn the cup upside down and place it onto the motor base, aligning the tabs on the cup with the motor base. Turn it clockwise, until you feel it click into place. The Timer light will illuminate. (Fig. 2)
- 7** Press one of the buttons to activate. (Fig. 3)  
**NOTE:** When using the AUTO-iQ® presets, the unit will operate using pulses, pauses and continuous runs. The pauses allow the contents of the cup to settle. When the timer reaches "0", it will stop by itself.
- 8** To remove the cup, ensure that the motor has stopped running. Then turn the cup counter clockwise (Fig. 4) and pull straight up to remove. (Fig. 5)
- 9** Turn the cup upright and remove the Pro Extractor Blades Assembly by twisting the Pro Extractor Blades Assembly counter clockwise. (Fig. 5)
- 10** Do not store blended contents with the Pro Extractor Blade Assembly attached.
- 11** Twist the Sip & Seal lid onto the cup to enjoy your drink on the go. Press flip top cap firmly into the opening to get the best seal. The flip top cap locks open when pressed backward.
- 12** For storage, only use Sip & Seal lid to cover.
- 13** Be sure to store the Pro Extractor Blades Assembly attached to an empty cup when not in use.
- 14** Make sure that the motor base is unplugged when not in use.
- 15** To remove the motor base unit, tip the unit forward from the rear to easily disengage the suction cups.

## Suggested Uses

PURPOSE / FUNCTION	SUGGESTED CUP	TYPE OF FOOD
Chopping / Pulsing	12 oz. 18 oz. 24 oz.	Salsa Leafy Herbs
Mixing	24 oz. 32 oz.	Batters Dips
Sauces	24 oz. 32 oz.	Vinaigrettes Salad Dressings Simple Sauces*
Frozen Blending	18 oz. 24 oz. 32 oz.	Ice Frozen Fruit Ice Cream
Nutrient Juices/Smoothies	18 oz. 24 oz. 32 oz.	Fruits Vegetables Leafy Greens

**⚠ CAUTION: DO NOT process hard, dry ingredients such as coffee beans, grains, seeds or spices without adding juices or other liquids. Softer items such as cheese, bread and nuts may be chopped without adding liquids by using the Pulse function.**

\*When blending sauces, make sure they're cooled to room temperature first - Ninja® containers are not intended for hot blending.

### FILLING YOUR NUTRI NINJA®

For best results, always follow recipe directions when filling your Nutri Ninja cups. When you're not using a recipe, use the following guidelines:

Start with your fresh fruit or veggies. Then add any nuts, seeds or powder followed by any liquids like juice or milk. More liquid can help to integrate powder. Then add your frozen fruit and ice. Remember to securely tighten the blade and don't overfill the cups. **(Fig. 7)**

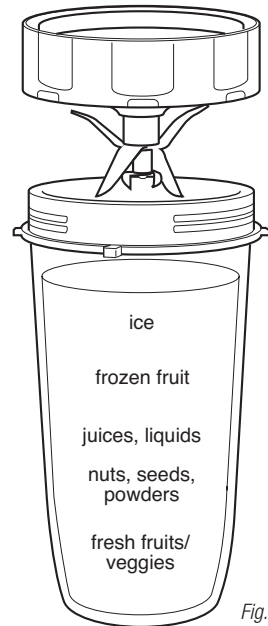


Fig. 7

# Care & Maintenance

## HOW TO CLEAN

**⚠ CAUTION: Make sure that the motor base is unplugged from the power source before inserting or removing any attachment and before cleaning.**

**⚠ CAUTION: DO NOT immerse the motor base into water or any other liquid.**

**1** Separate/remove all parts from each other.

**2 Hand Washing:** Wash the lids, Nutri Ninja® cups and Pro Extractor Blades® Assembly in warm, soapy water. When washing the Pro Extractor Blades Assembly, use a dish-washing utensil with a handle to avoid direct hand contact with blades. Handle Pro Extractor Blades Assembly with care to avoid contact with sharp edges. Rinse and air dry thoroughly.

**Dishwasher:** The Nutri Ninja cups, lids, and Pro Extractor Blades Assembly are all dishwasher safe. The lids and Pro Extractor Blades Assembly are top rack dishwasher safe. Ensure the Pro Extractor Blades Assembly is removed from the cup before placing in the dishwasher.

**⚠ WARNING: Handle the Pro Extractor Blades Assembly with care when washing, as the blades are sharp. Contact with the blades' edges can result in laceration.**

**3** Wipe the motor base clean with a damp cloth

If the appliance needs servicing, please call customer service at 1-877-646-5288.

## HOW TO STORE

**1** Store the Nutri Ninja® with AUTO-iQ® upright with the blade assembly inside the corresponding container with the lid secured on top. Do not place anything on top. Store the rest of the attachments in a safe place where they will not be damaged and won't cause harm. Loosely wrap the power cord around the motor base.

**NOTE: Do not store blended or unblended ingredients in the Nutri Ninja Cup with the blade assembly attached.**

## RESETTING THE MOTOR THERMOSTAT

The Nutri Ninja with AUTO-iQ features a unique safety system which prevents damage to the unit's motor and drive system should you inadvertently overload your appliance. If the appliance is being overloaded, the motor will stop. To reset the appliance, follow the resetting procedure below:

- 1** Unplug the appliance from the electrical outlet.
- 2** Remove and empty the cup and ensure that no food is jamming the Pro Extractor Blades Assembly.
- 3** Allow the appliance to cool for approximately 30 minutes.
- 4** Re-install the cup onto the base and re-plug the appliance into the electrical outlet.
- 5** Proceed to use the appliance as before while making sure not to exceed the recommended maximum capacities.

# Troubleshooting Guide

PROBLEMS	POSSIBLE REASONS & SOLUTIONS
<b>Unit doesn't turn on</b>	<ul style="list-style-type: none"><li>• Make sure the unit is plugged in</li><li>• Insert and rotate cup clockwise in the base until it "clicks". Display should turn on.</li></ul>
<b>Unit doesn't turn off</b>	<ul style="list-style-type: none"><li>• Remove cup from base by rotating cup counter clockwise and lifting out. Display should turn off. Unplug the power cord from the outlet.</li></ul>
<b>Lid/blade assembly hard to assemble</b>	<ul style="list-style-type: none"><li>• <b>Set the cup on a level surface. Place the lid or Pro Extractor Blades Assembly on the top of the cup and align the threads so that the lid/ blades sit flat on the cup. Twist clockwise so that the lid/blades evenly align to the cup until you have a tight seal.</b></li></ul>
<b>Food is not evenly chopped</b>	<ul style="list-style-type: none"><li>• For best results when chopping, make sure all ingredients are as dry as possible. Cut pieces down to even sizes, and reduce the amount of food in the cup. Use very short pulses by quickly pressing the "PULSE" button.</li></ul>
<b>Doesn't mix well, food gets stuck</b>	<ul style="list-style-type: none"><li>• Using the AUTO-iQ® programs is the easiest way to achieve great results. The pulses and pauses allow the food to settle towards the blade. If food is routinely getting stuck adding some liquid will usually help.</li><li>• When packing the cups, start with fresh items, then powders/nuts. Add liquids, and finally frozen items or ice.</li></ul>
<b>Unit moves on counter while blending</b>	<ul style="list-style-type: none"><li>• Make sure the surface as well as the feet of the unit are clean and dry.</li></ul>
<b>Unit is difficult to remove from counter for storage</b>	<ul style="list-style-type: none"><li>• Tip unit forward from the back to easily disengage the suction feet.</li></ul>

## Replacement Parts

### ORDERING REPLACEMENT PARTS

To order additional parts and attachments, please visit our website: [www.ninjakitchen.com](http://www.ninjakitchen.com) or feel free to contact customer service: **1-877-646-5288**.









## ONE (1) YEAR LIMITED WARRANTY

**SharkNinja Operating LLC** warrants this product to be free from material defects and workmanship for a period of one (1) year from the date of purchase when utilized for normal household use, subject to the following conditions, exclusions and exceptions.

The liability of **SharkNinja Operating LLC** is limited solely to the cost of the repair or replacement of the unit at our option. This Limited Warranty does not cover normal wear of parts and does not apply to any unit that has been tampered with or used for commercial purposes. This Limited Warranty does not cover damage caused by misuse, abuse, negligent handling or damage due to faulty packaging or mishandling in transit. This Limited Warranty does not cover damage or defects caused by or resulting from damages from shipping or repairs, service or alteration to the product or any of its parts, which have been performed by a repair person not authorized by **SharkNinja Operating LLC**.

If your appliance fails to operate properly while in use under normal household conditions within the warranty period, return the complete appliance and accessories, freight prepaid. For assistance with warranty service options or customer support, please call our customer care and product specialists at , call 1-877-646-5288 or visit our website [www.ninjakitchen.com/warranty](http://www.ninjakitchen.com/warranty).

If the appliance is found to be defective in material or workmanship, **SharkNinja Operating LLC** will repair or replace it free of charge. Proof of purchase is required and a fee of \$19.95 will apply to cover the cost of return freight. \*

This Limited Warranty is extended to the original purchaser of the unit and excludes all other legal, implied and/or conventional warranties. The responsibility of **SharkNinja Operating LLC** if any, is limited to the specific obligations expressly assumed by it under the terms of this Limited Warranty. In no event is **SharkNinja Operating LLC** liable for incidental or consequential damages to anyone of any nature whatsoever. Some states do not permit the exclusion or limitation of incidental or consequential damages, so the above may not apply to you.

This Limited Warranty gives you specific legal rights, and you may also have other rights which vary from state to state or from province to province.

**\*IMPORTANT: Carefully pack item to avoid damage in shipping. Be sure to include proof of purchase date and to attach tag to item before packing with your name, complete address and phone number with a note giving purchase information, model number and what you believe is the problem with the item. We recommend you insure the package (as damage in shipping is not covered by your Limited Warranty). Mark the outside of your package "ATTENTION CUSTOMER SERVICE".**

---

## Product Registration

Please visit [www.registeryourninja.com](http://www.registeryourninja.com) or call 1-877-646-5288 to register your new Ninja® product within ten (10) days of purchase. You will be asked to provide the store name, date of purchase and model number along with your name and address.

The registration will enable us to contact you in the unlikely event of a product safety notification. By registering you acknowledge to have read and understood the instructions for use, and warnings set forth in the accompanying instructions.



**SharkNinja Operating LLC**

**US:** Newton, MA 02459

**CAN:** Ville St-Laurent, QC H4S 1A7

**1-877-646-5288**

**[www.ninjakitchen.com](http://www.ninjakitchen.com)**

Copyright © SharkNinja Operating LLC 2016

**Auto-iQ, Ninja, Nutri Ninja, Pro Extractor Blades** and **Sip & Seal** are registered trademarks of SharkNinja Operating LLC.

For SharkNinja U.S. Patent information visit [sharkninja.com/USPatents](http://sharkninja.com/USPatents).

Printed in China

BL482Q\_1100W\_161111.2