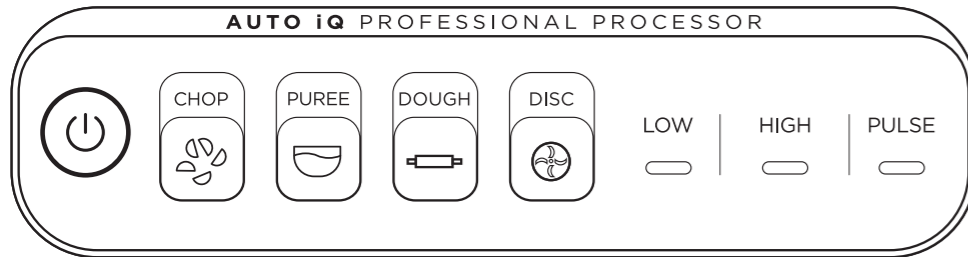


NINJA® PROFESSIONAL FOOD PROCESSOR WITH AUTO-IQ®

AUTO-IQ PROGRAMS

Intelligent preset programs combine unique blending and pausing patterns that do the work for you. Once an Auto-iQ program is selected, it will start immediately and automatically stop when processing is complete. To stop processing before the end of a program, press the currently active button again.

NOTE: Program run times vary from a few seconds to up a minute.



CHOP

Timed pulses and pauses give you consistent chopping results. Run program once for a large chop, twice for a small chop and three times if you prefer to mince.

PUREE

(Not available on all models)

Create anything from silky-smooth sauces to the perfect hummus.

DOUGH

Ideal for creating delicious dough, from pie to pizza to cookie doughs.

NOTE: Use PULSE to add mix-ins, such as chocolate chips or raisins, after dough program has completed.

DISC

Slice or shred a variety of ingredients, from fresh vegetables to cheeses.

MANUAL PROGRAMS

LOW and HIGH: When selected, each of these speeds runs continuously for 60 seconds. They do not work in conjunction with any Auto-iQ programs.

PULSE: Offers greater control of pulsing and processing. Operates only when PULSE is pressed. Use short presses for short pulses and long presses for long pulses.

IMPORTANT: DO NOT run the unit on HIGH if using the dough blade.

The unit is **NOT** intended to crush ice. Refer to the warnings on pages 4-6 in the Owner's Guide.

CLEANING

Dishwasher: The bowl, lid, disc, and blade assemblies are top-rack dishwasher safe. Ensure the blade assembly is removed from the bowl before placing in the dishwasher. Exercise care when handling blade assemblies.

Hand-washing: Wash bowl, lid, disc, and blade assemblies in warm, soapy water. Exercise care when washing the blade assemblies. Use a dishwashing utensil with a handle to avoid direct hand contact with blades. Rinse and air-dry thoroughly.

WARNING: Always unplug the base before cleaning.

NINJA®

PROFESSIONAL FOOD PROCESSOR WITH AUTO-IQ®

For questions or to register your product,
visit us online at ninjakitchen.com



@ninjakitchen

© 2020 SharkNinja Operating LLC.
AUTO-IQ, NINJA, and PRECISION PROCESSOR are registered trademarks of SharkNinja Operating LLC.
BN600_Series_QSG_MP_Mv4

Please make sure to read the enclosed Ninja® Owner's Guide prior to using your unit.

NINJA®

PROFESSIONAL FOOD PROCESSOR WITH AUTO-IQ® QUICK ASSEMBLY

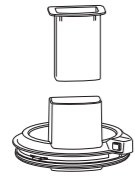


USING THE CHOPPING & DOUGH BLADE ASSEMBLIES

PARTS



PRECISION
PROCESSOR®
BOWL



PRECISION
PROCESSOR
BOWL LID WITH
FOOD PUSHER

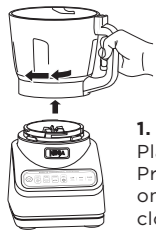


CHOPPING BLADE
ASSEMBLY



DOUGH BLADE
ASSEMBLY

ASSEMBLY



1. Place Precision Processor Bowl on base and turn clockwise to lock in place.



2. Holding the blade assembly by the top of the shaft, install it in bowl.



3. Place feed chute lid on bowl and turn clockwise to lock in place.

PROCESS & ENJOY

Once the Precision Processor Bowl is locked onto the base, plug in the unit, then press the Power button to turn the unit on.



1. Select any program to begin processing.



2. When processing is complete, press button on feed chute lid near handle to unlock. Turn lid counterclockwise and lift from bowl.
Remove blade assembly before emptying bowl.

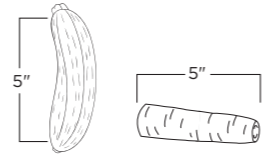


3. Remove bowl from base by turning it counterclockwise, then lifting it up.

WARNING: Chopping Blade Assembly is sharp and not locked in place. Before pouring, carefully remove Chopping Blade Assembly. Failure to do so will result in a risk of laceration. Refer to the Ninja Owner's Guide for additional information.

USING THE REVERSIBLE SLICING/SHREDDING DISC

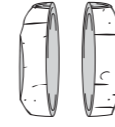
FOOD PREP



Trim ingredients so they are in 4" to 5" pieces or slightly over the height of the feed chute. **DO NOT** cut ingredients smaller than the size of the feed chute.



Cut both ends off ingredients to create flat surfaces. Trim tapered ingredients like carrots to make them more symmetrical.



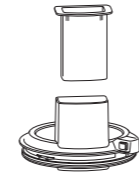
Larger ingredients, such as potatoes, may need to be cut in half lengthwise.

NOTE: Ensure cheese is well chilled before slicing/shredding. **DO NOT** slice or shred frozen cheese.

PARTS



PRECISION
PROCESSOR®
BOWL



PRECISION
PROCESSOR
BOWL LID WITH
FOOD PUSHER

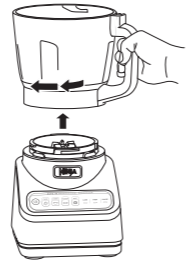


DISC SPINDLE

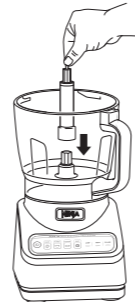


REVERSIBLE
SLICING/SHREDDING
DISC

ASSEMBLY



1. Place Precision Processor Bowl on base and turn clockwise to lock in place.



2. Install the disc spindle in the bowl.



3. Use the finger holes to grasp disc and place it over the spindle, with the side you would like to use facing up.



SHREDDING

SLICING



4. Place feed chute lid on bowl and turn clockwise to lock in place.

NOTE: The Slicing/Shredding Disc is reversible. Use the side labeled "Slicer" for slicing and the side labeled "Shredder" for shredding.

SLICE/SHRED & ENJOY

Once the Precision Processor Bowl is locked onto base, plug in the unit, then press the Power button to turn the unit on.



1. Select DISC or LOW. The disc will begin spinning.

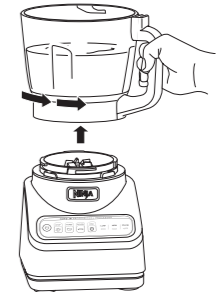
IMPORTANT: Use only the DISC program or LOW setting when using the Slicing/Shredding Disc.



2. Add ingredients through the feed chute on the lid. Use the food pusher to help guide the ingredients.



3. The disc will automatically stop spinning at the end of the program. Wait for disc to stop turning, then press the button on the feed chute lid near the handle to unlock. Turn lid counterclockwise and lift lid from bowl. Remove disc and spindle before emptying.



4. Remove bowl from base by turning it counterclockwise, then lifting it up.