






FIT BLENDER

QB3000SS Series | Owner's Guide



IMPORTANT SAFETY INSTRUCTIONS

PLEASE READ CAREFULLY BEFORE USE • FOR HOUSEHOLD USE ONLY

| | |
|---|---|
|  | Read and review instructions for operation and use. |
|  | Indicates the presence of a hazard that can cause personal injury, death or substantial property damage if the warning included with this symbol is ignored. |
|  | For indoor and household use only. |
| When using electrical appliances, basic safety precautions should always be followed, including the following: | |

WARNING: TO REDUCE THE RISK OF FIRE, ELECTRIC SHOCK OR INJURY:

- 1 Read all instructions prior to using the appliance and its accessories.
- 2 Carefully observe and follow all warnings and instructions. This unit contains electrical connections and moving parts that potentially present risk to the user.
- 3 Take your time and exercise care during unpacking and appliance setup. This appliance contains sharp, loose blades that can cause injury if mishandled.
- 4 Take inventory of all contents to ensure you have all parts needed to properly and safely operate your appliance.
- 5 Blades are sharp. Handle carefully
- 6 **DO NOT** blend hot liquids or carbonated liquids. Doing so may result in pressure buildup and steam exposure that can pose a risk of injury to the user.
- 7 Turn the appliance **OFF**, then unplug the appliance from the outlet when not in use, before assembling or disassembling parts, and before cleaning. To unplug, grasp the plug by the body and pull from the outlet. **NEVER** unplug by grasping and pulling the flexible cord.
- 8 **NEVER** unplug by grasping and pulling the flexible cord.
- 9 Before use, wash all parts that may contact food. Follow washing instructions covered in this instruction manual.
- 10 To protect against the risk of electric shock, **DO NOT** submerge the appliance or allow the power cord to contact any form of liquid.
- 11 **DO NOT** use this appliance outdoors. It is designed for indoor household use only.
- 12 **DO NOT** operate any appliance with a damaged cord or plug, or after the appliance malfunctions or is dropped or damaged in any manner. This appliance has no user-serviceable parts. If damaged, contact SharkNinja for servicing.
- 13 Extension cords should **NOT** be used with this appliance.
- 14 **DO NOT** allow children to operate this appliance or use as a toy. Close supervision is necessary when any appliance is used near children.
- 15 This appliance is **NOT** intended to be used by people with reduced physical, sensory, or mental capabilities, or lack of experience and knowledge, unless they are given supervision or instruction concerning use of the appliance by a person responsible for their safety.

IMPORTANT SAFETY INSTRUCTIONS

PLEASE READ CAREFULLY BEFORE USE • FOR HOUSEHOLD USE ONLY

⚠ WARNING

To reduce the risk of injury, fire, electrical shock or property damage, basic safety precautions must always be followed, including the following numbered warnings and subsequent instructions. Do not use appliance for other than intended use.

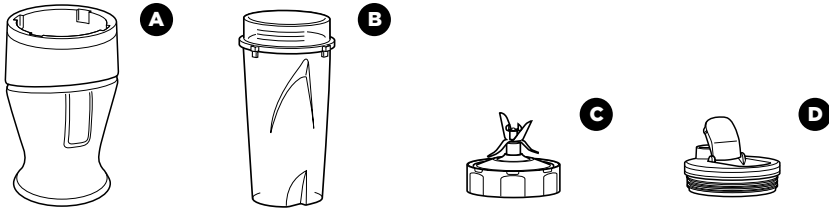
- 16 Before each use, inspect blade assemblies for damage. If a blade is bent or damage is suspected, contact SharkNinja to arrange for replacement.
- 17 **DO NOT** allow the unit or the cord to hang over the edges of tables or counters. The cord may become snagged and pull the appliance off the work surface.
- 18 **ALWAYS** use the appliance on a dry and level surface.
- 19 Keep hands, hair, and clothing out of the container when loading and operating.
- 20 **NEVER** leave the appliance unattended while in use.
- 21 **ONLY** use attachments, including canning jar, and accessories that are provided with the product or are recommended by SharkNinja. The use of attachments not recommended or sold by SharkNinja may cause fire, electric shock, or injury.
- 22 During operation and handling of the appliance, avoid contact with moving parts.
- 23 To protect against electric shock, **DO NOT** immerse cord, plug or any part of the main unit in water or any other liquids.
- 24 Check that the voltage indicated on the rating plate corresponds with that of the local network before connecting the appliance to the mains power supply.
- 25 **DO NOT** use with damaged cord or plug.
- 26 **DO NOT USE** if the appliance is not working, has been dropped, dropped into water, damaged or left outdoors.
- 27 **NO SERVICEABLE PARTS.** Incorrect re-assembly or repair can cause a risk of electrical shock or injury to persons when the appliance is used. Contact Customer Service.
- 28 This appliance contains no user-serviceable parts. All repairs should only be carried out by a qualified engineer. Improper repairs may place the user at risk of harm.
- 29 Remove the power cord from the mains power supply when not in use, before assembling or disassembling parts, and before cleaning.
- 30 **DO NOT** abuse the power cord. Never carry the appliance by the power cord. To unplug the appliance from the mains power supply, grasp the plug and not the cord and pull to disconnect.
- 31 **DO NOT** leave the appliance unattended whilst connected to the mains power supply.
- 32 **CAUTION: DO NOT PROCESS HOT FOODS OR HOT LIQUIDS.** Allow hot ingredients to cool before processing.
- 33 **DO NOT** remove the power pod before the chopping blades have stopped turning.
- 34 **CAUTION:** Chopping blades are sharp, handle with care, especially when removing the blade from the bowl, emptying the bowl and during cleaning. When handling the chopping blades, always hold by the plastic shaft.
- 35 **DO NOT** attempt to sharpen blades.
- 36 **DO NOT** expose the containers and accessories to extreme temperature changes. They may experience damage.
- 37 **DO NOT** use containers if they are cracked or chipped.
- 38 **DO NOT** use the appliance if chopping blades are bent or damaged.

SAVE THESE INSTRUCTIONS

- 39 Keep hands and utensils out of containers while chopping to reduce the risk of severe personal injury or damage to the blender/food chopper. A scraper may be used **ONLY** when the blender or processor is not running. When using the processor, always use food pusher to add food. **NEVER** add food by hand.
- 40 Immediately release the On/Off pulse button on the power pod in the event that the appliance malfunctions during use.
- 41 To reduce the risk of injury, **NEVER** operate the appliance without the splash guard and bowl in place; **DO NOT** try to defeat the interlock mechanism; make sure that the cutting blades are properly assembled before operating the appliance.
- 42 **DO NOT** use appliance for other than intended use.
- 43 **DO NOT** operate the appliance with an empty container.
- 44 **DO NOT** fill containers past the MAX FILL or MAX LIQUID lines.
- 45 If the appliance overheats, a thermal switch will become activated and shut off the motor. To reset, unplug the appliance and let it cool down for approximately 10 minutes before using again.
- 46 Be certain cover is secured in place before operating the appliance.
- 47 **DO NOT** microwave any containers or accessories provided with the appliance.
- 48 **DO NOT** perform grinding operations with chopping blades.
- 49 **DO NOT** process dry ingredients without adding liquid to food chopper. The food chopper is not intended for dry chopping

GETTING TO KNOW YOUR FIT BLENDER

- A Power Pod
- B Nutri Ninja® Cup
- C Nutri Ninja Blade Assembly
- D Spout Lid



NOTE: Number and size of Single-Serve Cups/Spout Lids vary by model.

BEFORE FIRST USE

IMPORTANT: Review all warnings at the beginning of this Owner's Guide before proceeding.

⚠ CAUTION: Do not immerse the power pod into water or any other liquid.

- 1 Remove all packaging material and labels from the appliance. Separate all parts from each other.
- 2 Wash the Nutri Ninja cup, spout lid, and Nutri Ninja Blade Assembly in warm, soapy water. When washing the blade assembly, use a dishwashing utensil with a handle to avoid direct hand contact with blades.

⚠ WARNING: Handle the blade assembly with care when washing, as the blades are very sharp.

- 3 Handle blade assembly with care to avoid contact with sharp edges. Rinse and air dry thoroughly.
- 4 The Nutri Ninja Cup, lid, and blade assembly are all dishwasher safe. It is recommended that the lid and blade assembly be placed on the top rack. Ensure the blade assembly is removed from the cup before placing in the dishwasher.
- 5 Wipe the Power Pod clean with a damp cloth.

REPLACEMENT PARTS

To order additional parts and accessories, visit ninjaccessories.com or contact Customer Service at 1-877-646-5288. So we may better assist you, please register your product online at registeryourninja.com and have the product on hand when you call.

USING THE NUTRI NINJA® CUP

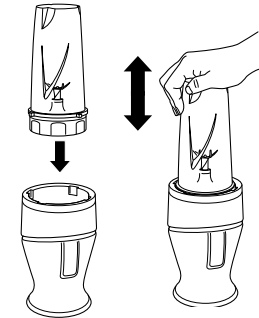
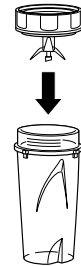
IMPORTANT: Review all warnings at the beginning of this Owner's Guide before proceeding.

TIP: For best results when blending drinks or smoothies, press down continuously until desired consistency is achieved. For best results when food processing, use short **"PULSES"** by pushing down on the cup in short, 1 second bursts, until desired consistency is achieved.

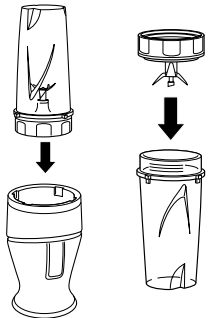
- 1 Place the Power Pod on a clean, dry, level surface such as a counter or tabletop.
- 2 Add ingredients to the Nutri Ninja Cup.

NOTE: Do not overfill. To avoid spilling, do not add ingredients past the "Max Fill" line.

- 3 Place the Nutri Ninja Blade Assembly onto the cup and screw it tightly until you have a good seal.



- 4 Turn the cup upside down and place it onto the Power Pod. Press down on the cup to pulse or blend.
- 5 Once desired consistency is reached, remove pressure from the cup. Pull straight up to remove.



- 6 Turn the cup upright and remove the blade assembly by twisting the blade assembly counterclockwise.
- 7 Do not store blended contents with the blade assembly attached.

- 8 Place the spout lid on the cup, twist to seal, and enjoy.
- 9 For storage, use only spout lid to cover cup.
- 10 Be sure to store the blade assembly attached to an empty cup when not in use.
- 11 Make sure the Power Pod is unplugged when not in use.

CARE & MAINTENANCE

HOW TO CLEAN

- 1 Separate all parts from each other.
- 2 **Hand Washing:** Wash the cup, lid, and blade assembly in warm, soapy water. When washing the blade assembly, use a dishwashing utensil with a handle to avoid direct hand contact with blades. Handle the blade assembly with care to avoid contact with sharp edges. Rinse and air-dry thoroughly.
Dishwasher: The cup, lid, and blade assembly are all dishwasher safe. It is recommended that the lid and blade assembly be placed on the top rack. Ensure the blade assembly is removed from the cup before placing in the dishwasher.
- 3 Wipe the motor base clean with a damp cloth.

Please call customer service at 1-877-646-5288 if any servicing needs to be performed on the appliance.

RESETTING THE MOTOR THERMOSTAT

This blender features a unique safety system that prevents damage to the unit's motor and drive system should it be inadvertently overloaded. If the appliance is being overloaded, the motor will stop. To reset the appliance, follow the resetting procedure below:

- 1 Unplug the appliance from the electrical outlet.
- 2 Remove cup from the Power Pod, empty the cup, and ensure no food is jamming the blade assembly.
- 3 Allow the appliance to cool for approximately 10 minutes.
- 4 Proceed to use the appliance as before, making sure not to exceed the recommended maximum capacities.

HOW TO STORE

Store the blender upright with the Nutri Ninja® Blade Assembly secured to the Nutri Ninja Cup. Do not place anything on top. Store the rest of the attachments in a safe place where they will not be damaged and won't cause harm. Loosely wrap the power cord around the Power Pod.

NOTE: Do not store blended or unblended ingredients in the Nutri Ninja Cup with the blade assembly attached.

TROUBLESHOOTING GUIDE

The motor doesn't start or blade assembly doesn't rotate.

- Check that the bottom of Power Pod is clean and there is no food blocking the connection of the pod and cup.
- There is too much food in the cup.
- The unit has overheated. Unplug and wait approximately 10 minutes before using again.
- Check that the plug is securely inserted into the electrical outlet.
- Check fuse or breaker. Reset breaker or replace fuse if necessary.

Ingredients are unevenly chopped.

- Either you are chopping too many ingredients at once, or the pieces are too big. Try cutting the ingredients in smaller pieces of even size and processing smaller amounts per batch.

Ingredients are chopped too finely or are too watery.

- The ingredients have been over processed. Use brief pulses or process for a shorter time. Let the blade assembly stop completely between pulses.

Ingredients collect on the sides of the Nutri Ninja® Cup.

- Too many ingredients are being processed at once. Turn the Power Pod off. When the blades stop rotating, remove the cup from the Power Pod. Remove some of the ingredients being processed.

The unit will not create snow from solid ice.

- Do not use ice that has been sitting out or has started to melt. Be sure to use short pulses in the beginning to break up large pieces.

Shark | NINJA

ONE (1) YEAR LIMITED WARRANTY

The One (1) Year Limited Warranty applies to purchases made from authorized retailers of **SharkNinja Operating LLC**. Warranty coverage applies to the original owner and to the original product only and is not transferable.

SharkNinja warrants that the unit shall be free from defects in material and workmanship for a period of one (1) year from the date of purchase when it is used under normal household conditions and maintained according to the requirements outlined in the Owner's Guide, subject to the following conditions and exclusions:

What is covered by this warranty?

1. The original unit and/or non-wearable parts deemed defective, in SharkNinja's sole discretion, will be repaired or replaced up to one (1) year from the original purchase date.
2. In the event a replacement unit is issued, the warranty coverage ends six (6) months following the receipt date of the replacement unit or the remainder of the existing warranty, whichever is later. SharkNinja reserves the right to replace the unit with one of equal or greater value.

What is not covered by this warranty?

1. Normal wear and tear of wearable parts (such as blending vessels, lids, cups, blades, blender bases, removable pots, racks, pans, etc.), which require regular maintenance and/or replacement to ensure the proper functioning of your unit, are not covered by this warranty. Replacement parts are available for purchase at ninjaaccessories.com.
2. Any unit that has been tampered with or used for commercial purposes.
3. Damage caused by misuse, abuse, negligent handling, failure to perform required maintenance (e.g., failure to keep the well of the motor base clear of food spills and other debris), or damage due to mishandling in transit.
4. Consequential and incidental damages.
5. Defects caused by repair persons not authorized by SharkNinja. These defects include damages caused in the process of shipping, altering, or repairing the SharkNinja product (or any of its parts) when the repair is performed by a repair person not authorized by SharkNinja.
6. Products purchased, used, or operated outside North America.

How to get service

If your appliance fails to operate properly while in use under normal household conditions within the warranty period, visit ninjakitchen.com/support for product care and maintenance self-help. Our Customer Service Specialists are also available at **1-877-646-5288** to assist with product support and warranty service options, including the possibility of upgrading to our VIP warranty service options for select product categories. So we may better assist you, please register your product online at registeryourninja.com and have the product on hand when you call.

SharkNinja will cover the cost for the customer to send in the unit to us for repair or replacement. A fee of \$20.95 (subject to change) will be charged when SharkNinja ships the repaired or replacement unit.

How to initiate a warranty claim

You must call **1-877-646-5288** to initiate a warranty claim. You will need the receipt as proof of purchase. We also ask that you register your product online at registeryourninja.com and have the product on hand when you call, so we may better assist you. A Customer Service Specialist will provide you with return and packing instruction information.

How state law applies

This warranty gives you specific legal rights, and you also may have other rights that vary from state to state. Some states do not permit the exclusion or limitation of incidental or consequential damages, so the above may not apply to you.



REGISTER YOUR PURCHASE



registeryourninja.com



Scan QR code using mobile device

RECORD THIS INFORMATION

Model Number: _____

Serial Number: _____

Date of Purchase: _____
(Keep receipt)

Store of Purchase: _____

TECHNICAL SPECIFICATIONS

Voltage: 120V-, 60Hz

Watts: 700W

Nutri Ninja®

Cup Capacity: 16 oz. (2 cups, 500 mL)

SharkNinja Operating LLC

US: Needham, MA 02494

1-877-646-5288

ninjakitchen.com

Illustrations may differ from actual product. We are constantly striving to improve our products, therefore the specifications contained herein are subject to change without notice.

NINJA and NUTRI NINJA are registered trademarks of SharkNinja Operating LLC.

This product may be covered by one or more U.S. patents.

See sharkninja.com/patents for more information.

© 2022 SharkNinja Operating LLC

QB3000SSSeries_IB_REV_Mv7



@ninjakitchen