

# NINJA®

BL687C0  
OWNER'S GUIDE



[www.ninjakitchen.com](http://www.ninjakitchen.com)  
1-877-646-5288

# IMPORTANT SAFETY INSTRUCTIONS

## For Household Use Only

WHEN USING ELECTRICAL APPLIANCES, BASIC SAFETY PRECAUTIONS SHOULD ALWAYS BE FOLLOWED, INCLUDING THE FOLLOWING:

READ ALL INSTRUCTIONS BEFORE USING YOUR NINJA® KITCHEN SYSTEM WITH AUTO-iQ™ TOTAL BOOST™.

### POLARIZED PLUG

**⚠ WARNING:** To reduce the risk of electric shock, this appliance has a polarized plug (one blade is wider than the other). This plug will fit into a polarized outlet only one way. If the plug does not fit fully into the outlet, reverse the plug. If it still does not fit, contact a qualified electrician to install the proper outlet. **DO NOT modify the plug in any way.**

**⚠ WARNING:** Extension cords are not recommended for use with this product.

**⚠ WARNING:** TO REDUCE THE RISK OF FIRE, ELECTRIC SHOCK OR INJURY:

- 1 **⚠ WARNING:** Remove utensils prior to processing. Failure to remove may cause the jar to be damaged or to shatter which may cause personal injury.
- 2 **⚠ WARNING:** Blade assemblies are sharp, not locked in place and removable, handle with care. When handling the blade assemblies, always hold by the shaft. Failure to do so will result in a risk of laceration.

- 3 **⚠ WARNING:** Stacked Blade Assembly is sharp and not locked in place. If using the pour spout, ensure the lid is fully locked onto the pitcher. If pouring with the lid removed, carefully remove the Stacked Blade Assembly first, holding it by the shaft. Failure to do so will result in a risk of laceration.
- 4 **⚠ WARNING:** Chopping Blade Assembly is sharp and not locked in place. Before emptying contents carefully remove lid and Chopping Blade Assembly, holding it by the shaft. Failure to do so will result in risk of laceration.
- 5 **⚠ CAUTION:** Do not blend hot liquids, doing so may cause excessive pressure build-up, resulting in risk of the user being burned.
- 6 **⚠ CAUTION:** We do not recommend grinding in any of our Nutri Ninja cups.
- 7 **⚠ CAUTION:** Remove the Pro Extractor Blades Assembly from the Nutri Ninja cup upon completion of blending. Do not store ingredients before or after blending them in the cup with the blade assembly attached. Some foods may contain active ingredients or release gases that will expand if left in a sealed container, resulting in excessive pressure buildup that can pose a risk of injury. For ingredient storage in the cup, use only Sip & Seal Lid to cover.
- 8 To protect against electrical shock, do not submerge the appliance or allow the power cord to come into contact with water or any other liquid.
- 9 **DO NOT** allow children to operate the appliance or use as a toy. Close supervision is necessary when any appliance is used near children.



- 10 Never leave an appliance unattended when in use.
- 11 Appliance accessories are not intended to be used in the microwave as it may result in damage to the accessories.
- 12 Turn the appliance Off and remove the power cord from the electrical outlet when not in use, before assembling or disassembling parts and before cleaning. To unplug, grasp the plug and pull from the electrical outlet. Never pull from the power cord.
- 13 **DO NOT** abuse the power cord. Never carry the appliance by the power cord or yank it to disconnect from electrical outlet; instead grasp the plug and pull to disconnect.
- 14 **DO NOT** operate any appliance with a damaged cord or plug, or after the appliance malfunctions, has been dropped or damaged in any manner. This appliance has no serviceable parts. Return the appliance to SharkNinja Operating LLC for examination, repair or adjustment.
- 15 **DO NOT** let the power cord hang over the edge of table or counter or touch hot surfaces such as the stove.
- 16 Always use appliance on a dry, level surface.
- 17 Keep hands, hair, clothing, as well as utensils out of container while processing to reduce the risk of severe injury to persons or damage to the appliance. A scraper may be used but only when the appliance is not running.
- 18 Avoid contact with moving parts.
- 19 **DO NOT** attempt to sharpen blades.
- 20 **DO NOT** use the appliance if blade assembly is bent or damaged.
- 21 To reduce risk of injury, never place the blade assembly on base without pitcher or bowl properly attached.
- 22 **DO NOT** operate this appliance on or near any hot surfaces (such as gas or electric burner or in a heated oven).
- 23 The use of attachments or accessories including canning jars, not recommended by the manufacturer may result in fire, electric shock or personal injury.
- 24 **DO NOT** remove the container from the motor base while the appliance is in operation.
- 25 To reduce the risk of injury, **NEVER** operate the appliance without the lid in place; **DO NOT** try to defeat the interlock mechanism; make sure that the attachment is properly installed before operating the appliance.
- 26 **DO NOT** expose containers to extreme temperature changes.
- 27 **DO NOT** overfill.
- 28 **DO NOT** operate the appliance empty.
- 29 In the event that the unit overloads, the unit will shut down. Unplug the appliance and let it cool down for approximately 15 minutes before using again.
- 30 **THIS PRODUCT IS INTENDED FOR HOUSEHOLD USE ONLY.** Do not use this appliance for anything other than its intended use. Do not use outdoors.
- 31 The maximum rating is based on the Stacked Blade Assembly (pitcher) that drives the greatest power and other recommended attachments may draw significantly less power or current.

# SAVE THESE INSTRUCTIONS

**THIS BOOK COVERS MODEL NUMBER:**

BL687C0 30

**TECHNICAL SPECIFICATIONS**

Voltage:	120V~, 60Hz.
Power:	1500 Watts
Pitcher Capacity:	72 oz. (9 cups, 2.1 L)
Max Liquid Capacity:	64 oz. (8 cups, 1.9 L)
Bowl Capacity:	64 oz. (8 cups, 1.8 L)
Nutri Ninja® Cup Capacity:	24 oz. (3 cups, 710 ml)
	18 oz. (2.25 cups, 532 ml)

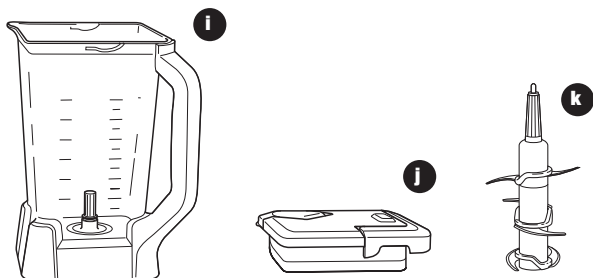
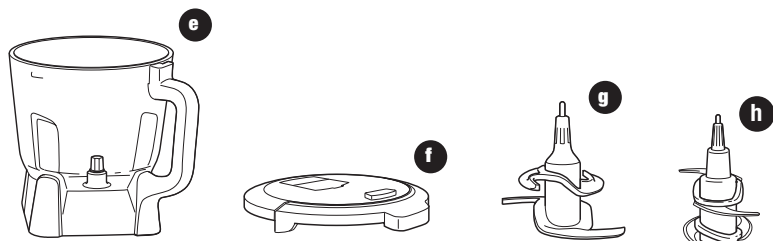
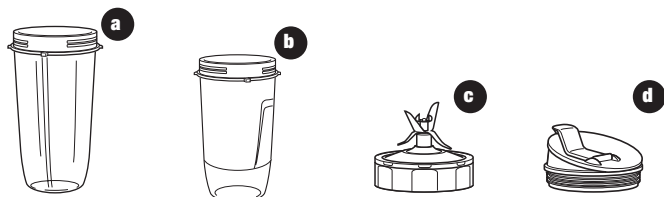


## Contents

Thank you for  
purchasing the  
Ninja® Kitchen  
System With  
Auto-iQ™ Total  
Boost™.

Getting to Know Your Ninja Kitchen System with Auto-iQ Total Boost.....	5
Before First Use .....	7
Assembly and Use of the Blender Pitcher.....	8
Assembly and Use of the Processor Bowl .....	10
Assembly and Use of the Nutri Ninja® Cups .....	12
Programs, Speed Settings & Uses.....	13
Care & Maintenance .....	15
Troubleshooting Guide.....	16
Replacement Parts.....	16
Warranty & Registration.....	18

# Getting To Know Your Ninja® Kitchen System with Auto-iQ™ Total Boost™



- a** 24 oz. Nutri Ninja® Cup (x2)
- b** 18 oz. Nutri Ninja® Cup
- c** Pro Extractor Blades® Assembly
- d** Sip & Seal® Lid (x3)

- e** Food Processor Bowl
- f** Food Processor Lid
- g** Dough Blade Assembly (food processor)
- h** Chopping Blade Assembly (food processor)

- i** Pitcher
- j** Pitcher Lid
- k** Stacked Blade Assembly (blender)
- l** Motor Base

**NOTE:** Blades are **not** interchangeable.

**Note:** Additional accessories are available for purchase at [ninjakitchen.com](http://ninjakitchen.com)

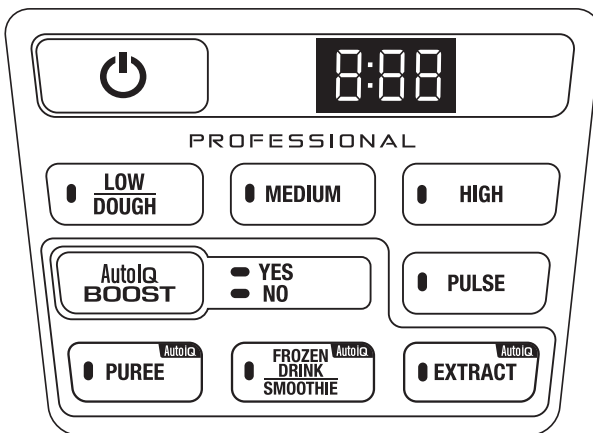


The Ninja® Kitchen System with Auto-iQ™ Total Boost™ is a professional, high powered innovative tool with a sleek design and outstanding performance, a true asset to any kitchen. The Ninja® Kitchen System with Auto-iQ™ Total Boost™ features intelligent programs that provides unique pulsing, blending and pausing patterns that do the work for you! Get great results every time with no guesswork required! For best results, be sure to carefully read all the instructions contained in the manual before using this appliance.

### Ninja® Kitchen System with Auto-iQ™ Total Boost™ Technology Features:

- 3 Auto-iQ™ programs - Puree, Frozen Drink/Smoothie, Extract
- Auto-iQ™ Total Boost™ - Control more than ever before - select BOOST “Yes” to achieve perfectly smooth mixtures, or select BOOST “No” if you prefer more texture.
- 4 Manual Settings: Low/Dough, Medium, High & Pulse
- Patented Ninja® Blade Technology
- BPA Free Blender Pitcher (MAX Liquid Capacity: 64 oz.), Nutri Ninja® Cups, Food Processor Bowl and Lids
- Total Crushing® Technology
- LED Control Panel with Timer
- Sturdy, Non-Slip Base
- Smart Lid technology for easy release
- Nutri Ninja® Nutrient & Vitamin Extraction\*
- Drip-Free Pour Spout

\* Extract a drink containing vitamins and nutrients from fruits and vegetables.



## Before First Use

### PLEASE KEEP THESE IMPORTANT SAFEGUARDS IN MIND WHEN USING THE APPLIANCE:

**IMPORTANT:** Make sure that the motor base is plugged in for use.

**IMPORTANT:** Never add ingredients into the container before placing the attachment in first.

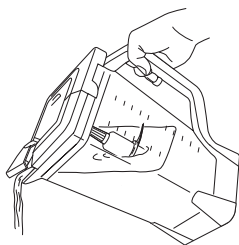
**IMPORTANT:** Attachments are not interchangeable.

**IMPORTANT:** DO NOT attempt to operate the appliance without the lid on.

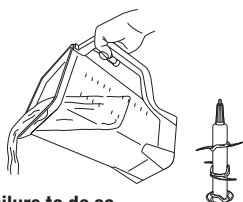
**IMPORTANT:** Never run the appliance empty.

**IMPORTANT:** Appliance accessories are not intended to be used in the microwave as it may result in damage to the accessories.

**▲ WARNING:** Stacked Blade Assembly is sharp and not locked in place. If using the pour spout, ensure the lid is fully locked onto the pitcher. Failure to do so will result in a risk of laceration.



**▲ WARNING:** Stacked Blade Assembly is sharp and not locked in place. If pouring with the lid removed, carefully remove the Stacked Blade Assembly first, holding it by the shaft. Failure to do so will result in a risk of laceration.



**▲ WARNING:** Chopping Blade Assembly is sharp and not locked in place. Before emptying contents carefully remove lid and Chopping Blade Assembly, holding it by the shaft. Failure to do so will result in a risk of laceration.



**▲ CAUTION:** Do not immerse the motor base into water or any other liquid.

- 1 Remove all packaging material and labels from the appliance. Separate/remove all parts from each other.
- 2 Wash the lids, pitcher, food processor bowl, Nutri Ninja® cups and blade assemblies in warm, soapy water. When washing the blade assemblies, use a dish-washing utensil with a handle to avoid direct hand contact with blades.

**▲ WARNING:** Handle the Blade Assemblies with care when washing, as the blade are sharp.

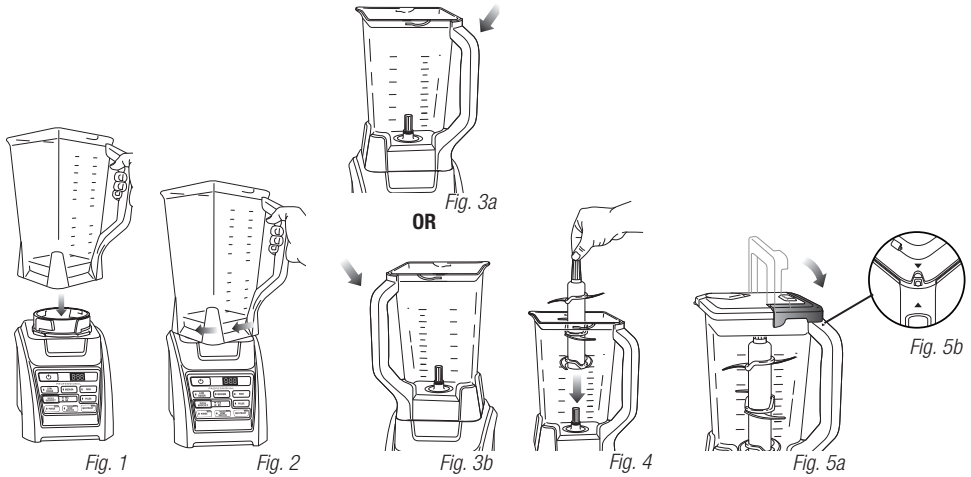
- 3 Handle blade assemblies with care to avoid contact with sharp edges. Rinse and air dry thoroughly.
- 4 The pitcher, food processor bowl, Nutri Ninja cups, lids and blade assemblies, are all dishwasher safe. It is recommended that the lids and blade assemblies be placed on the top rack. Ensure that the blade assemblies are removed from the cup, pitcher and processor bowl before placing in the dishwasher.
- 5 Wipe the motor base clean with a damp cloth.



## Assembly and Use of the Pitcher

- ⚠ WARNING:** Handle the Stacked Blade Assembly with care, as the blades are sharp.
  - ⚠ WARNING:** Remove utensils prior to processing. Failure to remove may cause the blender pitcher to be damaged or to shatter, which may cause personal injury.
  - ⚠ WARNING:** Never leave the appliance unattended while in use.
  - ⚠ CAUTION:** Do not blend hot liquids, doing so may cause excessive pressure buildup, resulting in risk of the user being burned.
- IMPORTANT:** Make sure that the motor base is plugged in for use.

### ASSEMBLY



- 1 Review warning and caution statements above before proceeding to number 2.
- 2 Place the motor base on a clean, dry, level surface such as a counter or table top. Press down on the motor base to make sure that the suction cups adhere to the counter or table top.
- 3 Align and lower the Pitcher onto the motor base. (Fig. 1) Handle should be aligned slightly to the right of the "LOCK" symbol on the motor base.
- 4 Rotate the pitcher clockwise until it locks in place, you will hear a click when the lock is engaged. (Fig. 2)
- 5 The pitcher can be placed on the motor base two ways; the handle can be on the front right corner or the front left corner. (Fig. 3a, Fig. 3b)
- 6 Holding the Stacked Blade Assembly by the top of the shaft, place it onto the drive gear inside the pitcher. Ensure that the Stacked Blade Assembly is seated properly and is standing upright. (Fig. 4)  
**NOTE:** The Stacked Blade Assembly will fit loosely on the drive gear.
- 7 Add the ingredients to the pitcher, making sure that they do not exceed the highest measured marking line on the side of the pitcher.
- 8 Holding the lid by the handle in the upright position, place it on top of the pitcher aligning the triangle (▼) located on the lid with the triangle (▲) located on the pitcher's handle. (Fig. 5a) Press the handle down until you hear a click. The triangles on the lid and the blender handle **MUST** be aligned in order for the blender to turn on. (Fig. 5b)  
**IMPORTANT:** As a safety feature, the power light (Ⓞ) will flash and the motor will not work if the pitcher and lid are not installed correctly. When the pitcher and lid are installed properly, the power light (Ⓞ) will be solid, indicating that the appliance is ready for use.
- 9 Plug the power cord into the electrical outlet and press the power button (Ⓞ).

## Assembly and Use of the Pitcher - cont.

### USE



Fig. 6

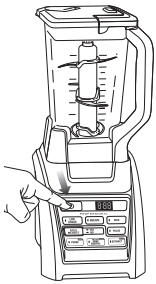


Fig. 7

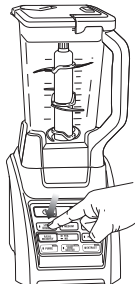


Fig. 8

### REMOVAL

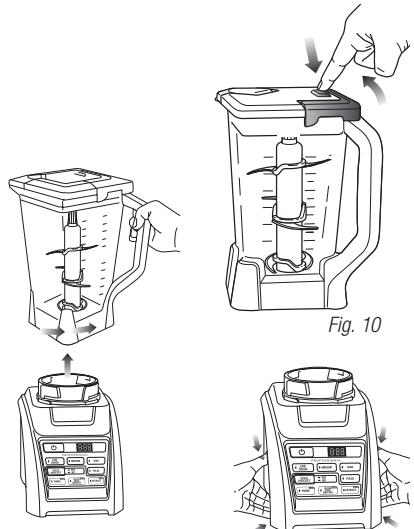


Fig. 10

Fig. 9

Fig. 11

- 10 Review warning and caution statements on page 8 before proceeding.

**NOTE:** Ninja® Kitchen System with Auto-iQ™ Total Boost™ can sense which jar is on the motor base. The available functions will illuminate depending on which jar is placed on the motor base (**Fig. 6**). Some settings will not be available for certain jars.

- 11 Press the power button to turn on the unit. Select the speed or Auto-iQ program that best suits your needs. The Auto-iQ program will stop the appliance automatically at the end of the program. (**Fig. 7**)

**NOTE:** Pulse ingredients for even chopping by holding the Pulse button until your desired consistency is reached.

- 12 To pause the appliance, press the selected speed or Auto-iQ Program a second time. (**Fig. 8**)
- 13 When you have reached your desired consistency, stop the appliance by pressing the power button (⏻) and wait for the blade to stop turning. (**Fig. 8**)
- 14 Turn the pitcher counter clockwise to remove and then lift off the base. (**Fig. 9**)

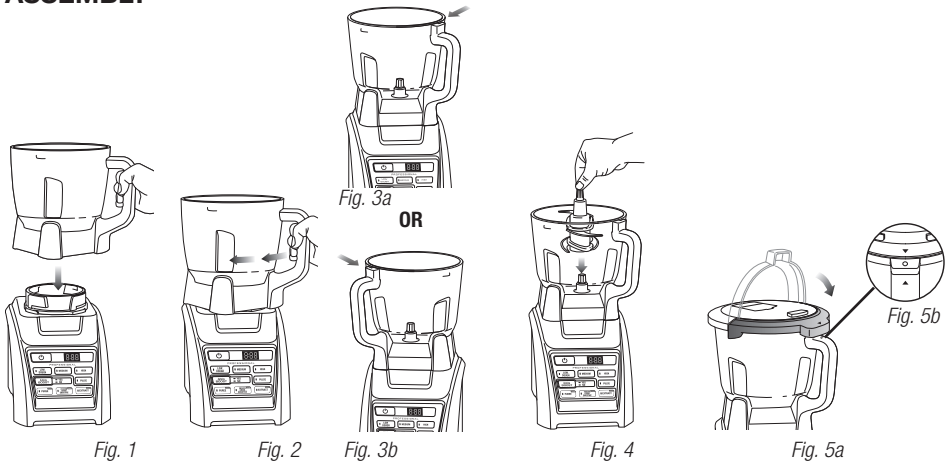
**⚠ CAUTION:** Never insert your hands in the pitcher as the Stacked Blade Assembly is sharp. Always use a spatula to dislodge food that has stuck to the sides of the pitcher.

- 15 Open the pour spout cap and use the spout to empty liquid contents.
- 16 For thicker consistencies, remove the lid and Stacked Blade Assembly carefully (by its shaft), then empty contents from the container. To remove the lid, press the release button on the lid and pull the lid handle up to a 90° angle and lift the lid off the blender pitcher. (**Fig. 10**)
- 17 Make sure that the unit is unplugged when not in use.
- 18 To release the motor base from the counter or table top, place your hands underneath both sides of the motor base and gently pull the unit up and towards you. (**Fig. 11**)

## Assembly and Use of the Processor Bowl

- ⚠ **WARNING:** Chopping Blade Assembly is sharp and not locked in place. Before emptying contents carefully remove lid and Chopping Blade Assembly, holding it by the shaft. Failure to do will result in risk of laceration.
  - ⚠ **WARNING:** Remove utensils prior to processing. Failure to remove may cause the bowl to be damaged or to shatter, which may cause personal injury.
  - ⚠ **WARNING:** Never leave the appliance unattended while in use.
  - ⚠ **CAUTION:** Do not blend hot liquids, doing so may cause excessive pressure buildup, resulting in risk of the user being burned.
- IMPORTANT:** Make sure that the motor base is plugged in for use.

## ASSEMBLY



- 1 Review warning and caution statements above before proceeding to number 2.
- 2 Place the motor base on a clean, dry, level surface such as a counter or table top. Press down on the motor base to make sure that the suction cups adhere to the counter or table top.
- 3 Align and lower the Processor Bowl onto the motor base. (Fig. 1) Handle should be aligned slightly to the right of the "LOCK" symbol on the motor base.
- 4 Rotate the bowl clockwise until it locks in place, you will hear a click when the lock is engaged. (Fig. 2)
- 5 The bowl can be placed on the motor base two ways; the handle can be on the front right corner or the front left corner. (Fig. 3a, Fig. 3b)
- 6 Holding the desired blade assembly by the top of the shaft, place it onto the drive gear inside the bowl. Ensure that the blade assembly is seated properly and is standing upright. (Fig. 4)  
**NOTE:** The blade will fit loosely on the drive gear.
- 7 Add the ingredients to the bowl, making sure that they do not exceed the highest measured marking line on the side of the bowl.  
**NOTE:** The 64 oz. bowl is not intended for blending drinks. Do not overfill.  
**NOTE:** To add liquids during blending, open the drizzle hole on the top of the lid and pour the liquid slowly into the mixture.
- 8 Holding the lid by the handle in the upright position, place it on top of the Processor Bowl aligning the triangle (▼) located on the lid with the triangle (▲) located on the Processor Bowl handle. (Fig. 5a) Press the handle down until you hear a click. The triangles on the lid and the Processor Bowl handle **MUST** be aligned in order for the blender to turn on. (Fig. 5b)
- 9 Plug the power cord into the electrical outlet and press the power button (⏻).  
**IMPORTANT:** As a safety feature, the power button (⏻) will flash and the motor will not work if the bowl and lid are not installed correctly. When the bowl and lid are installed properly, the power button (⏻) will be solid, indicating that the appliance is ready for use.

## Assembly and Use of the Processor Bowl - cont.

### USE

### REMOVAL

### USE

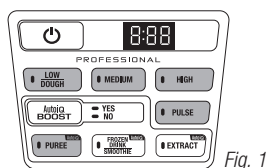


Fig. 1



Fig. 2

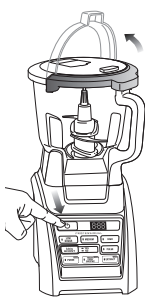


Fig. 3

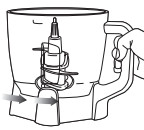


Fig. 4

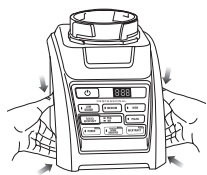


Fig. 5



Fig. 6

### USING THE CHOPPING BLADE ASSEMBLY

- Review warning and caution statements on page 10 before proceeding to number 2.
- NOTE:** Ninja® Kitchen System with Auto-iQ™ Total Boost™ can sense which jar is on the motor base. The available functions will illuminate depending on which jar is placed on the motor base. (Fig. 1) Some settings will not be available for certain jars.
- Holding the Chopping Blade Assembly by the shaft, place it onto the gear shaft inside the bowl. Ensure that the Chopping Blade Assembly fits around the gear shaft and that it is standing straight. (Fig. 2)
- Add the ingredients and secure the bowl lid onto the bowl. (Fig. 2)
- Plug the power cord into the electrical outlet and press on the power button (⏻). Select the speed or Auto-iQ program that best suits your needs. Pulse ingredients for even chopping by **holding** the Pulse button until your desired consistency is reached.
- NOTE:** Please refer to "Speed Settings & Uses" chart for suggested uses and speeds.
- When you have reached your desired consistency, stop the appliance by pressing the power button (⏻) and wait for the blade to stop turning. (Fig. 3)
- To remove the lid, press the release button on the lid and pull the lid handle up to a 90° angle. (Fig. 3)
- Turn the bowl counter clockwise and lift it to remove it from the motor base. (Fig. 4)
- To release the motor base from the counter or table top, place your hands underneath both sides of the motor base and gently pull the unit up and towards you. (Fig. 5)

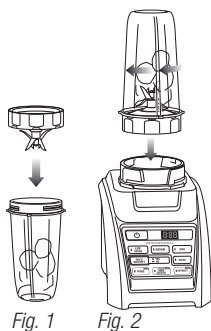
### USING THE DOUGH BLADE ASSEMBLY

- Review warning and caution statements on page 10 before proceeding to number 2.
- NOTE:** Ninja® Kitchen System with Auto-iQ™ Total Boost™ can sense which jar is on the motor base. The available functions will illuminate depending on which jar is placed on the motor base (Fig. 1). Some settings will not be available for certain jars.
- Holding the Dough Blade Assembly by the shaft, place it onto the gear shaft inside the bowl. Ensure that the Dough Blade Assembly fits around the gear shaft and that it is standing straight. (Fig. 6)
- Add the ingredients and secure the bowl lid onto the bowl.
- Plug the power cord into the electrical outlet and press on the power button (⏻). Select LOW/DOUGH on the control panel and process until ingredients come together to form a mass.
- NOTE:** Please refer to "Speed Settings & Uses" chart for suggested uses and speeds.
- Once finished making dough, stop the appliance by pressing the power button (⏻) and wait for the blade to stop turning.
- To remove the lid, press the release button on the lid and pull the lid handle up to a 90° angle. (Fig. 3)
- Turn the bowl counter clockwise and lift it to remove it from the motor base. (Fig. 4)
- To release the motor base from the counter or table top, place your hands underneath both sides of the motor base and gently pull the unit up and towards you. (Fig. 5)

## Assembly and Use of the Nutri Ninja® Cups

- ⚠ WARNING:** Handle the Pro Extractor Blades® Assembly with care, as the blades are sharp.
  - ⚠ WARNING:** Remove utensils prior to processing. Failure to remove may cause the Nutri Ninja cup to be damaged or to shatter, which may cause personal injury.
  - ⚠ WARNING:** Never leave the appliance unattended while in use.
  - ⚠ CAUTION:** Do not blend hot liquids, doing so may cause excessive pressure buildup, resulting in risk of the user being burned.
  - ⚠ CAUTION:** Remove the Pro Extractor Blades Assembly from the Nutri Ninja cup upon completion of blending. Do not store ingredients before or after blending them in the cup with the blade assembly attached. Some foods may contain active ingredients or release gases that will expand if left in a sealed container, resulting in excessive pressure buildup that can pose a risk of injury. For ingredient storage in the cup, use only Sip & Seal Lid to cover.
- IMPORTANT:** Make sure that the motor base is plugged in for use.

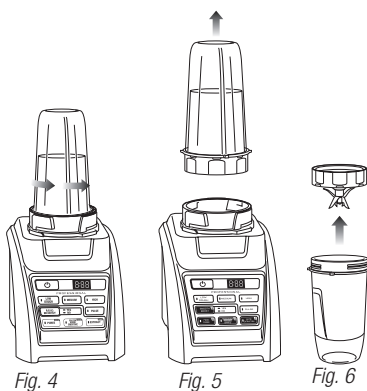
### ASSEMBLY



### USE



### REMOVAL



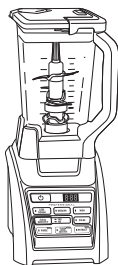
**NOTE:** Ninja® Kitchen System with Auto-iQ™ Total Boost™ can sense which jar is on the motor base. The available functions will illuminate depending on which jar is placed on the motor base. Some settings will not be available for certain jars.

- 1 Review warning and caution statements above before proceeding to number 2.
- 2 Place the motor base on a clean, dry, level surface such as a counter or table top. Press down on the motor base to make sure that the suction cups adhere to the counter or table top.
- 3 Add ingredients to the Nutri Ninja cup.
- 4 Place the Pro Extractor Blades® Assembly onto the cup and tightly screw it on clockwise until you have a good seal. (Fig. 1)
- 5 Turn the Nutri Ninja cup upside down and place it onto the motor base, aligning the tabs on the cup with the motor base. Rotate the Nutri Ninja cup clockwise until it locks in place, you will hear a click when the lock is engaged. (Fig. 2)
- 6 Press the power button on, and select the speed or Auto-iQ program that suits your needs. The Auto-iQ program will stop the appliance automatically at the end of the program. (Fig. 3)

- 7 To pause the appliance, press the selected speed or Auto-iQ Program a second time.
- 8 Once you have reached your desired consistency, turn the power button off. Turn the Nutri Ninja cup counter clockwise and pull straight up to remove. (Fig. 4, Fig. 5)  
**NOTE:** Do not overfill! To avoid spilling, do not add ingredients past the "Max" liquid line.
- 9 Turn the cup upright and remove the Pro Extractor Blades Assembly by twisting the blade assembly counter clockwise. (Fig. 6)
- 10 Do not store blended contents with the Pro Extractor Blade Assembly attached.
- 11 Place the Sip & Seal® lid onto the Nutri Ninja cup, twist to seal and enjoy!
- 12 For storage, only use Sip & Seal lid to cover.
- 13 Be sure to store the Pro Extractor Blades Assembly attached to an empty cup when not in use.
- 14 Make sure that the motor base is unplugged when not in use.
- 15 To release the motor base from the counter or table top, place your hands underneath both sides of the motor base and gently pull the unit up and towards you.



## Programs, Speed Settings & Uses for the Pitcher



FUNCTION	CONTAINER	BLADE TYPE	SPEED or PROGRAM	TYPE OF FOOD
Frozen Drinks / Ice Crush	Pitcher	Stacked Blade Assembly	Auto-iQ™ Frozen Drink/ Smoothie	Ice Frozen Drinks Smoothies Milkshakes
Pureeing	Pitcher	Stacked Blade Assembly	Auto-iQ Puree	Sauces* Dips* Soups*

\* When blending soups, dips or sauces, make sure they're cooled to room temperature first - Ninja® containers are not intended for hot blending.

## Programs, Speed Settings & Uses for the Food Processor Bowl



FUNCTION	CONTAINER	BLADE TYPE	SPEED or PROGRAM	TYPE OF FOOD
Mincing	Food Processor Bowl	Chopping Blade Assembly	Pulse	Onion Garlic Herbs
Kneading and Dough Mixing	Food Processor Bowl	Dough Blade Assembly	Low/Dough	Bread Dough Pie Dough Pizza Dough Pretzel Dough Cookie Dough
Processing	Food Processor Bowl	Chopping Blade Assembly	Auto-iQ™ Puree Low/Dough Medium High	Pâtés Stewed Fruits Dips* Apple Sauce Spreads
Emulsifying	Food Processor Bowl	Chopping Blade Assembly	Low/Dough Medium	Salad Dressings Sauces*
Grinding	Food Processor Bowl	Chopping Blade Assembly	Medium	Meat
Grating	Food Processor Bowl	Chopping Blade Assembly	Pulse High	Grated Cheese Bread Crumbs
Chopping	Food Processor Bowl	Chopping Blade Assembly	Pulse	Salsa Vegetables Nuts
Batters	Food Processor Bowl	Dough Blade Assembly	Low/Dough	Cake Mixes Batters

\* When blending soups, dips or sauces, make sure they're cooled to room temperature first - Ninja® containers are not intended for hot blending.



## Programs, Speed Settings & Uses for the Nutri Ninja® Cup



FUNCTION	CONTAINER	BLADE TYPE	SPEED or PROGRAM	TYPE OF FOOD
Smoothies	Nutri Ninja Cup	Pro Extractor Blades® Assembly	Auto-iQ™ Frozen Drink/ Smoothie	Smoothies Protein Drinks
Green Smoothies	Nutri Ninja Cup	Pro Extractor Blades Assembly	Auto-iQ Extract	Frozen Fruits Frozen Vegetables Kale Celery Spinach Seeds Ice
Grating	Nutri Ninja Cup	Pro Extractor Blades Assembly	Pulse High	Grated Cheese Bread Crumbs
Chopping	Nutri Ninja Cup	Pro Extractor Blades Assembly	Pulse High	Salsa Vegetables

## Care & Maintenance

### HOW TO CLEAN

**⚠ CAUTION:** Make sure that the motor base is unplugged from the power source before inserting or removing any attachment and before cleaning.

**⚠ CAUTION:** DO NOT immerse the motor base into water or any other liquid.

**⚠ CAUTION:** Use caution when handling the blade assemblies as the blades are sharp.

- 1 Separate/remove all parts from each other.
- 2 **Hand Washing:** Wash the containers, lids, blade assemblies and attachments in warm, soapy water. When washing the blade assemblies, use a dish-washing utensil with a handle to avoid direct hand contact with blades. Handle blade assemblies with care to avoid contact with sharp edges. Rinse and air dry thoroughly.

**Dishwasher:** The containers, lids, blade assemblies and attachments are all dishwasher safe. The lids and blade assemblies are top rack dishwasher safe. Ensure that the blade assemblies are removed from the containers before placing in the dishwasher.

**⚠ WARNING:** Handle the Stacked Blade Assembly, Chopping Blade Assembly and Pro Extractor Blades® Assembly with care when washing, as the blades are sharp. Contact with the blades' edges can result in laceration.

- 3 Wipe the motor base clean with a damp cloth.

Please call customer service if any servicing needs to be performed on the appliance at 1-877-646-5288.

### ADDITIONAL CLEANING INSTRUCTIONS FOR THE NINJA PRO EXTRACTOR BLADES® ASSEMBLY

When washing the Pro Extractor Blades Assembly, do not attempt to remove the seal. Removing the seal can cause damage to the seal which can result in improper reassembly and leaking.

If the blade seal becomes loose, please call customer service at 1-877-646-5288.

### HOW TO STORE

Store the Ninja® Kitchen System with Auto-iQ™ Total Boost™ upright with the blade assembly inside the corresponding container with the lid secured on top. Do not place anything on top. Store the rest of the attachments in a safe place where they will not be damaged and won't cause harm. Loosely wrap the power cord around the motor base.

**NOTE:** Do not store blended or unblended ingredients in the Nutri Ninja Cup with the blade assembly attached.

### RESETTING THE MOTOR THERMOSTAT

The Ninja Kitchen System with Auto-iQ Total Boost features a unique safety system which prevents damage to the unit's motor and drive system should you inadvertently overload your appliance. **If the appliance is being overloaded, the motor will stop. Allow the appliance to cool for approximately 15 minutes.** To reset the appliance, follow the resetting procedure below:

- 1 Unplug the appliance from the electrical outlet.
- 2 Remove and empty the container and ensure that no food is jamming the cutting blade assemblies.
- 3 Allow the appliance to cool for approximately 15 minutes.
- 4 Re-install the container onto the base and re-plug the appliance into the electrical outlet.
- 5 Proceed to use the appliance as before making sure not to exceed the recommended maximum capacities.



## Troubleshooting Guide

PROBLEMS	POSSIBLE REASONS & SOLUTIONS
<b>Motor Doesn't Start or Blade Assembly Doesn't Rotate.</b>	<p>Make sure the container is securely locked on the motor base.</p> <p>Make sure the lid is securely on the container in the correct position (align arrows).</p> <p>The appliance is turned "Off". Press the power button (Ⓛ) to turn "On".</p> <p>Check that the plug is securely inserted into the electrical outlet.</p> <p>Check the fuse or circuit breaker.</p> <p>The unit has overloaded or overheated. Unplug and wait approximately 15 minutes before using again.</p> <p>Check to make sure the unit is not overloaded.</p>
<b>Food is Unevenly Chopped.</b>	<p>Either you are chopping too much food at one time, or the pieces are not of even size and processing smaller amounts per batch.</p>
<b>Food is Chopped Too Fine or is Too Watery.</b>	<p>The food has been over processed. Use Pulse button for controlled processing.</p>
<b>Food Collects On Lid or On the Sides of the Container.</b>	<p>The mixture is too thick. Add more liquid.</p>
<b>You Cannot Achieve Snow From Solid Ice.</b>	<p>Do not use ice that has been sitting out or has started to melt. Use ice straight from the freezer.</p> <p>Start with a few pulses and then go to a continuous blending cycle.</p>
<b>Motor Base Won't Stick to Counter or Table Top.</b>	<p>Make sure surface and suction feet are wiped clean. Suction feet will only stick to smooth surfaces. Suction feet WILL NOT stick on some surfaces such as, wood, tile and non-polished finishes.</p> <p>DO NOT attempt to use appliance when the motor base is stuck to a surface that is not secure, (cutting board, platter, plates, etc.).</p>
<b>You get an "Err" Message.</b>	<p>Your Ninja® is able to detect which jar is on the base. You may be trying to use a program that is not designed for the jar you have installed. The programs will light up indicating which programs are available for each jar.</p>
<b>You have a blinking red light.</b>	<p>The unit is not installed properly. For your safety the unit will only be able to be turned on when it is properly assembled. Please refer to the assembly pages of this inspiration guide for assistance.</p>

## Replacement Parts

### ORDERING REPLACEMENT PARTS

To order additional parts and attachments, please visit our website: [www.ninjakitchen.com](http://www.ninjakitchen.com) or feel free to contact customer service: **1-877-646-5288**.



## ONE (1) YEAR LIMITED WARRANTY

**SharkNinja Operating LLC** warrants this product to be free from material defects and workmanship for a period of one (1) year from the date of purchase when utilized for normal household use, subject to the following conditions, exclusions and exceptions.

The liability of **SharkNinja Operating LLC** is limited solely to the cost of the repair or replacement of the unit at our option. This Limited Warranty does not cover normal wear of parts and does not apply to any unit that has been tampered with or used for commercial purposes. This Limited Warranty does not cover damage caused by misuse, abuse, negligent handling or damage due to faulty packaging or mishandling in transit. This Limited Warranty does not cover damage or defects caused by or resulting from damages from shipping or repairs, service or alteration to the product or any of its parts, which have been performed by a repair person not authorized by **SharkNinja Operating LLC**.

If your appliance fails to operate properly while in use under normal household conditions within the Limited Warranty period, you may return the complete appliance and accessories with proof of purchase and date, freight prepaid. For Customer Service support, call 1-877-646-5288 or visit our website [www.ninjakitchen.com](http://www.ninjakitchen.com).

If the appliance is found by **SharkNinja Operating LLC** to be defective, in **SharkNinja Operating LLC's** sole discretion, we will repair or replace it free of charge. Proof of purchase date and a check made payable to **SharkNinja Operating LLC** in the amount of \$19.95 to cover the cost of return shipping and handling must be included.\*

This Limited Warranty is extended to the original purchaser of the unit and excludes all other legal, implied and/or conventional warranties. The responsibility of **SharkNinja Operating LLC** if any, is limited to the specific obligations expressly assumed by it under the terms of this Limited Warranty. In no event is **SharkNinja Operating LLC** liable for incidental or consequential damages to anyone of any nature whatsoever. Some states do not permit the exclusion or limitation of incidental or consequential damages, so the above may not apply to you.

This Limited Warranty gives you specific legal rights, and you may also have other rights which vary from state to state or from province to province.

**\*IMPORTANT: Carefully pack item to avoid damage in shipping. Be sure to include proof of purchase date and to attach tag to item before packing with your name, complete address and phone number with a note giving purchase information, model number and what you believe is the problem with the item. We recommend you insure the package (as damage in shipping is not covered by your Limited Warranty). Mark the outside of your package "ATTENTION CUSTOMER SERVICE".**

---

## PRODUCT REGISTRATION

Please visit [www.ninjakitchen.com](http://www.ninjakitchen.com) or call **1-877-646-5288** to register your new Ninja® product within ten (10) days of purchase. You will be asked to provide the store name, date of purchase and model number along with your name and address.

The registration will enable us to contact you in the unlikely event of a product safety notification. By registering you acknowledge to have read and understood the instructions for use, and warnings set forth in the accompanying instructions.



SharkNinja Operating LLC

US: Newton, MA 02459

CAN: Ville St-Laurent, QC H4S 1A7

1-877-646-5288

[www.ninjakitchen.com](http://www.ninjakitchen.com)

Copyright © 2016 SharkNinja Operating LLC

**Ninja**, **Pro Extractor Blades**, **Sip & Seal**, and **Total Crushing** are registered trademarks of SharkNinja Operating LLC.

**Auto-iQ** and **Total Boost** are trademarks of SharkNinja Operating LLC.

Printed in China

Illustrations may differ from actual product. We are constantly striving to improve our products, therefore the specifications contained herein are subject to change without notice.

For SharkNinja U.S. Patent information visit [www.sharkninja.com/USPatents](http://www.sharkninja.com/USPatents).

BL687CO\_30\_IB\_E\_160613\_5